

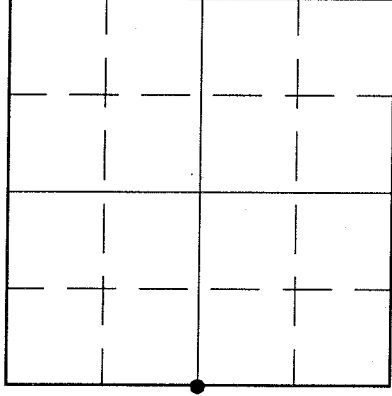
U.S. PUBLIC LAND SURVEY MONUMENT RECORD

HISTORY OF ORIGINAL CORNER ESTABLISHMENT AND SUBSEQUENT RESTORATION AND DESCRIPTION OF ANY RECORD, MONUMENT OCCUPATIONAL, TESTIMONIAL OR OTHER EVIDENCE CONSIDERED:

This corner was originally established in 1857 by James McBride. The Langlade County Surveyor had no additional measurement information from subsequent surveyors to help re-establish the location of this corner. Because of the lack of record information this corner was not dug for, but set from field evidence.

From the intensive farming operations in this area, very little field evidence still remains. The southwest corner of Section 29 was recovered. The 40 fence 1/4 mile north of the Southwest corner was measured as was a remnant East-West fence @ the West 1/4 corner. The distance from the Southwest corner was doubled through the 40 corner and checked with the fence near the West 1/4 corner. The location of the fences checked favorably enough to use the doubled distance. A survey marking pin was placed on centerline at the doubled distance.

● = LOCATION OF CORNER



SECTION 29

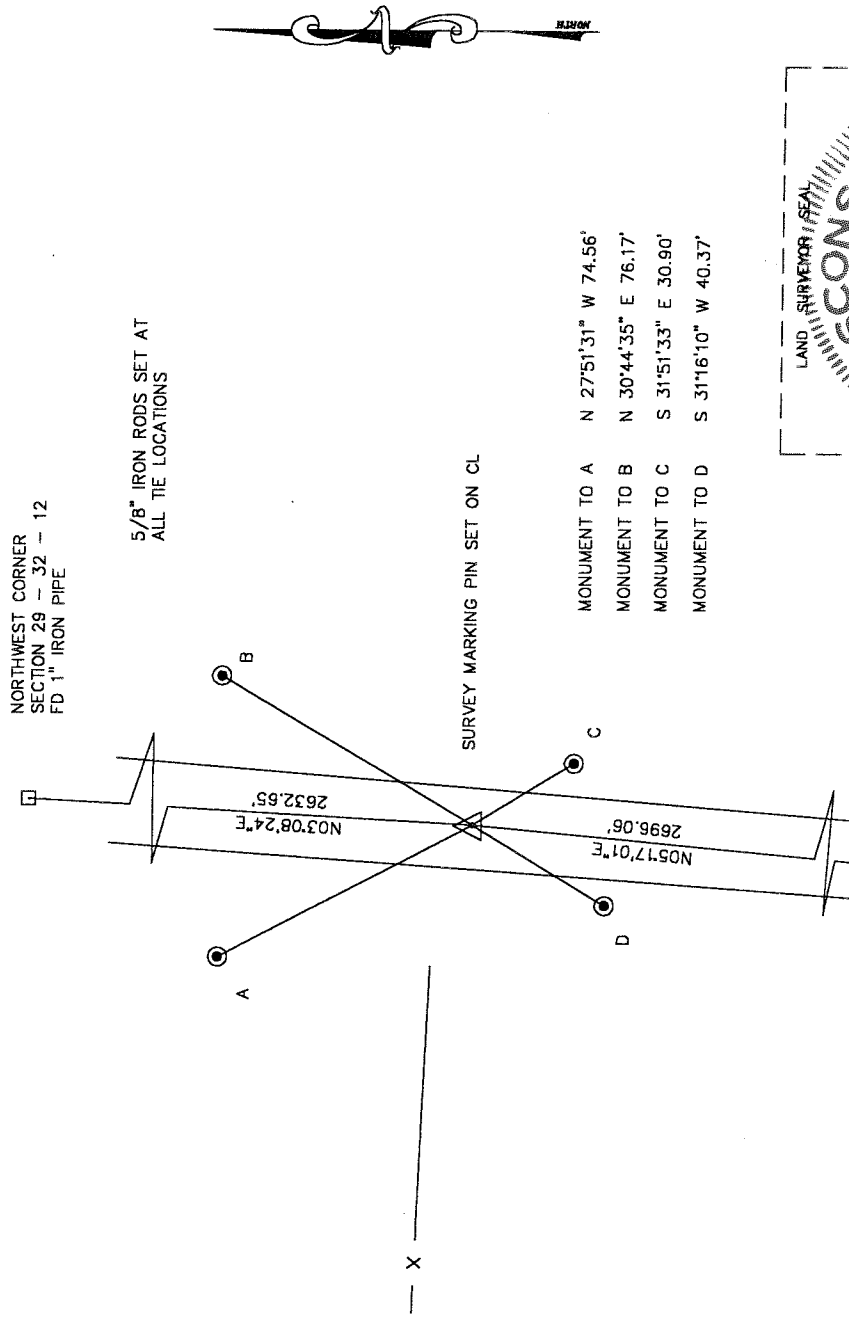
TOWNSHIP 32 NORTH, RANGE 12 EAST

TOWN OF _____
 PRICE _____
 LANGLADE COUNTY, WISCONSIN

CORNER WAS: (CHECK ALL THAT APPLY)

- RESTORED THROUGH ACCEPTANCE OF AN OBLITERATED EVIDENCE LOCATION
- RESTORED THROUGH ACCEPTANCE OF A FOUND PERPETUATED LOCATION
- CONSIDERED A LOST CORNER AND REESTABLISHED THROUGH LOST CORNER PROPORTIONATE METHODS (INCLUDE A PLAN VIEW DRAWING SHOWING DISTANCES AND DIRECTIONS TO OTHER PUBLIC LAND SURVEY CORNERS USED FOR PROPORTIONING AND DETERMINING THE CORNER LOCATION)
- RESTORED OR REESTABLISHED IN A LOCATION THAT DIFFERS FROM A PREVIOUS RESTORATION OR REESTABLISHMENT (INCLUDE A PLAN VIEW DRAWING AND INDICATE WHAT WAS SET AND/OR FOUND)
- CHECK IF THERE IS ADDITIONAL INFORMATION ON BACK

DESCRIBE THE MONUMENT AND ACCESSORIES USED TO PERPETUATE THE LOCATION OF THE CORNER. (INCLUDE A PLAN VIEW DRAWING AND INDICATE WHAT WAS SET AND/OR FOUND) ALSO INCLUDE FOUR TIES TO THE SECTION CORNER AND DESCRIPTION OF THE TIES.



NORTHWEST CORNER
 SECTION 29 - 32 - 12
 FD 1" IRON PIPE

5/8" IRON RODS SET AT
 ALL TIE LOCATIONS

SURVEY MARKING PIN SET ON CL

MONUMENT TO A	N 27°51'31" W 74.56'
MONUMENT TO B	N 30°44'35" E 76.17'
MONUMENT TO C	S 31°51'33" E 30.90'
MONUMENT TO D	S 31°16'10" W 40.37'

SOUTHWEST CORNER
 SECTION 29 - 32 - 12
 FD SURVEY MARKING PIN

DANIEL E. HIGGINBOTHAM

(Type or print name) CERTIFY THAT THE CORNER LOCATION SHOWN ON THIS RECORD WAS DETERMINED BY ME OR UNDER MY DIRECTION AND CONTROL AND THAT THIS U.S. PUBLIC LAND SURVEY MONUMENT RECORD IS CORRECT AND COMPLETE TO THE BEST OF MY KNOWLEDGE AND BELIEF.

Daniel Higginbotham
 SIGNATURE

8/4/98
 DATE

INDEX NO. 75

