

# U.S. PUBLIC LAND SURVEY MONUMENT RECORD

(Prepared and as required by S. A-E 7.08 WI Administrative Code)

The SOUTH QUARTER corner of Section 30, T. 32 N., R. 12 E., Langlade County, WI

Corner was: (check all that apply)

- Restored through acceptance of an obliterated evidence location.
- Restored through acceptance of a found perpetuated location.
- Determined to be lost and re-established through proportionate methods.  
(Show bearings and distances to PLSS corners used for proportioning.)
- Restored/recovered/reestablished in a location that differs from a previously established position. (Show difference in plan view below.)

321230 0020

- Check here if additional information is shown on the reverse side of this form.

Describe record evidence, recovered physical evidence, occupational evidence, testimonial evidence and all other evidence considered in the recovery/restoration of the corner.

The original corner was established in 1851 by James McBride. Original bearing trees: fir, 8", S19°W, 168 lks., lks. and a birch, 15", N58°E, 13 lks. B.F. Dorr, 1886, (FB140-42) used this corner for survey work in Section 31, but didn't describe it. 06/30/98 D. Tlusty, M. Kielcheski, Marty Mytas dug with backhoe. Found 3/4" iron rod, 0.2' down below road surface. Continued to dig, found stone, approximately 0.4' x 0.4' with chiseled "4" on top, 2.2' below road surface. I accept location of stone found as the best evidence of old, perpetuated corner location.

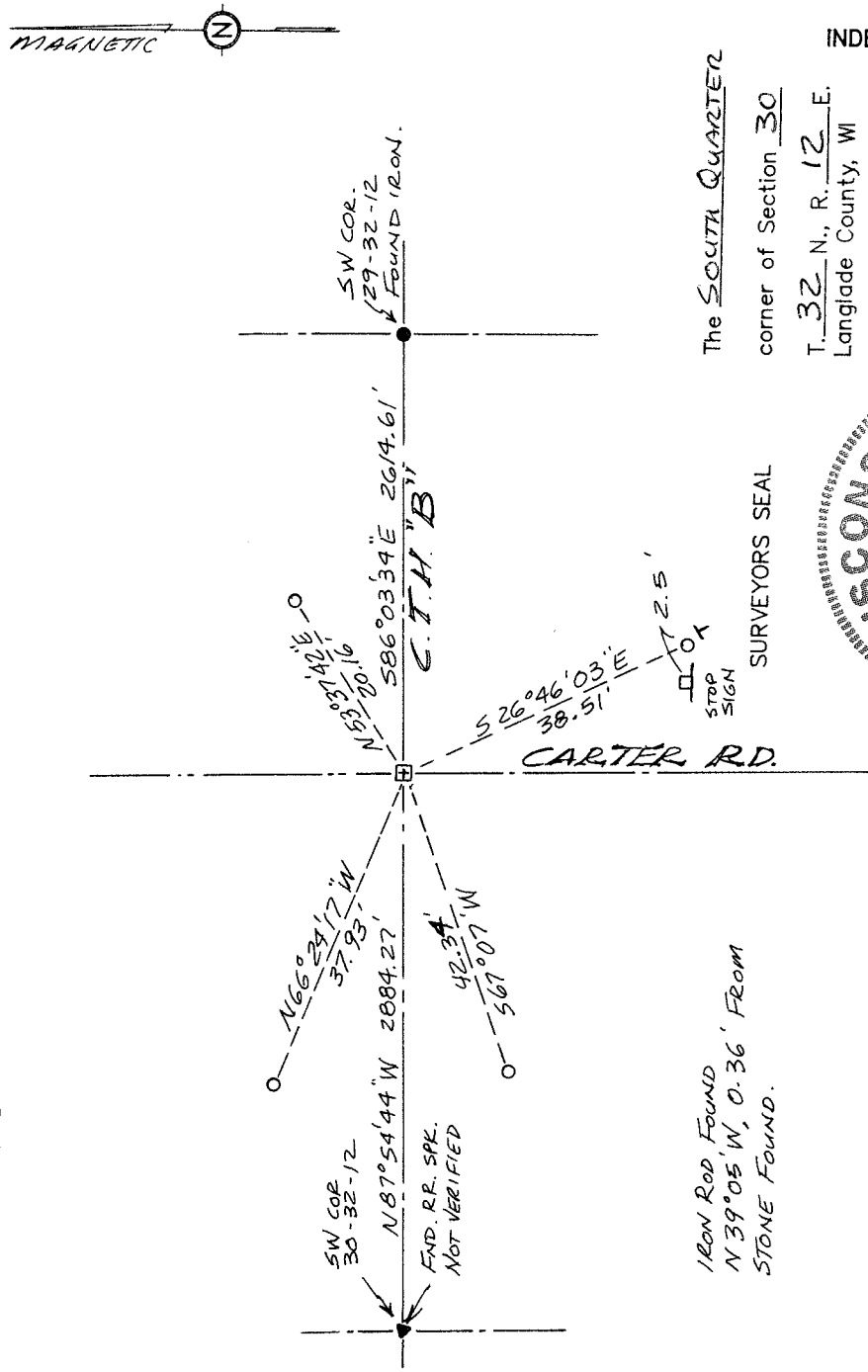
Physical description of the monument set:

For the corner, I left stone in place as found. Set 1" x 30" iron pipe on North edge of stone, 0.3' North of chiseled "4". Set 30d nail for temporary marker in fresh road patch. Corner is 3' North of center of pavement.

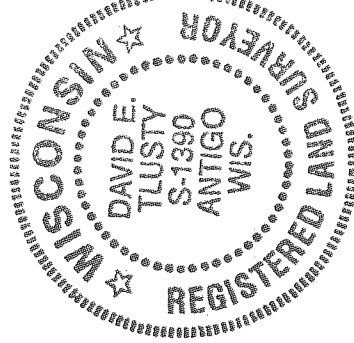
Describe the accessories used to perpetuate the location of the corner. Include a plan view drawing and indicate accessories found/set. Describe measuring point on bearing trees. Show any topographic features that would aid in future recovery of the corner.

- = 3/4" x 30" rebar with red plastic cap set flush with ground
- ⊕ = white vinyl sign post set

Notes FB14-105



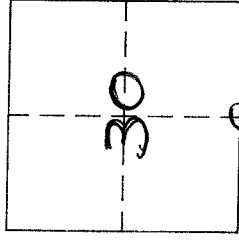
The SOUTH QUARTER corner of Section 30 T. 32 N., R. 12 E. Langlade County, WI



DAVID E. TLUSTY, LANGLADE COUNTY SURVEYOR certify that the corner location shown on this record was determined by me or under my direction and control and that this U.S. Public Land Survey Monument Record is correct and complete to the best of my knowledge and belief.

David E. Tlusty 8/5/98  
Signature Date

INDEX No. V 3



○ = Location of corner