

4321229 2000 2020

# U.S. PUBLIC LAND SURVEY MONUMENT RECORD

## INSTRUCTIONS:

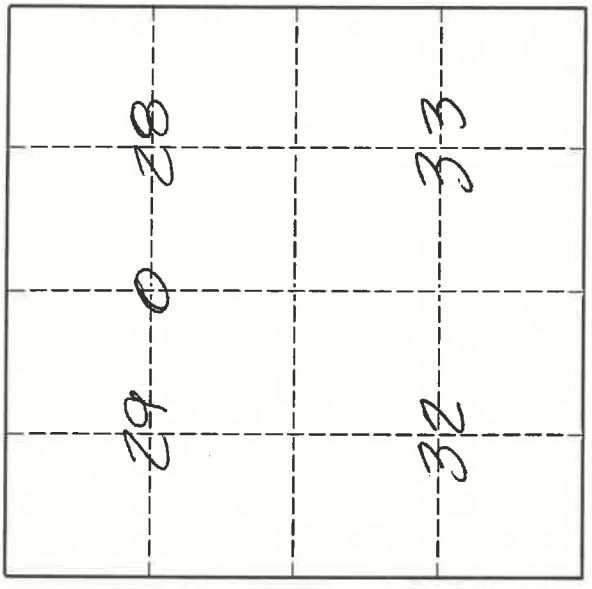
This record shall show the location of the corner and shall include all of the following nine elements (a through i).

- (a) Identify the corner by reference to the U.S. public land survey system.
- O = Corner monument restored.

West Quarter corner of Section 28, Township 32 North, Range 12 East, Langlade County, Wisconsin.

12/03/2020

See maintenance record and coordinates on backside of this sheet.



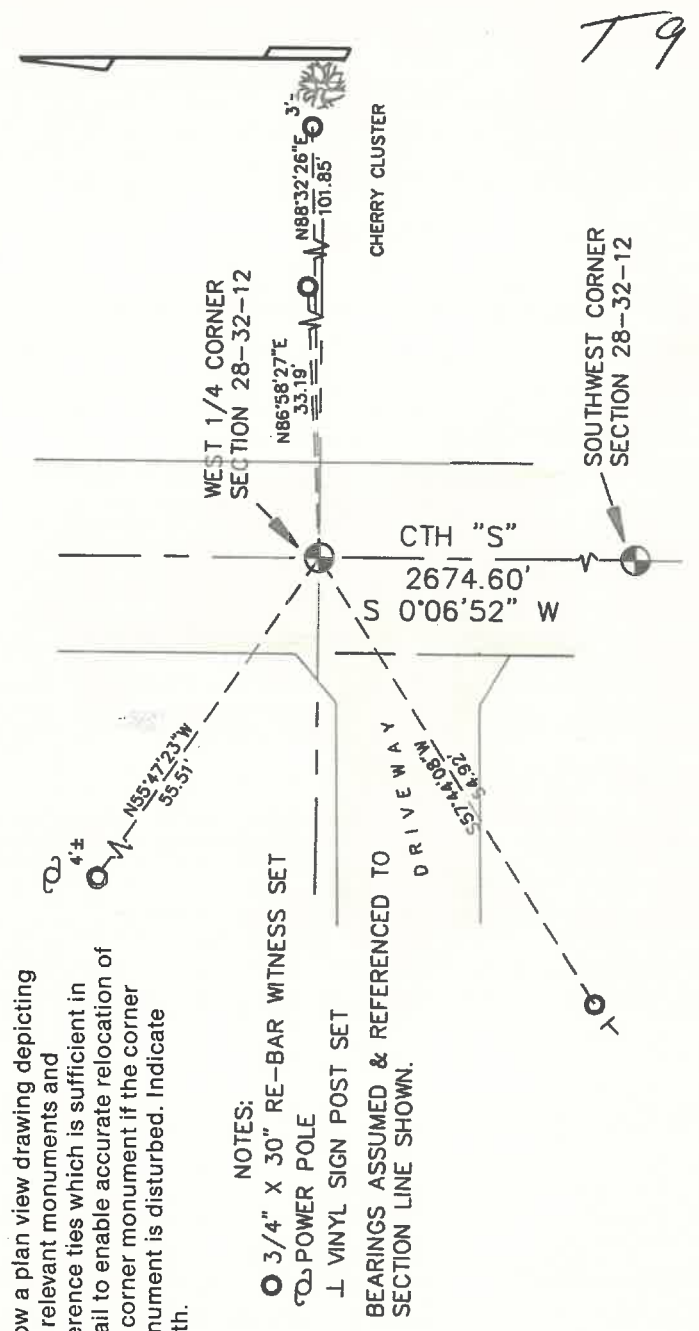
T. 32 N., R. 12 E.

- (b) Describe any record evidence, monument evidence, occupational evidence, testimonial evidence or any other material evidence you considered, and whether the monument was found or placed.

The original corner was established in 1857 by James McBride. Original BT's: sugar, 8", S45°W, 32 lks, and a lind, 15", N50°E, 8 lks. Malcolm Hutchinson (date unknown, but probably around 1900) ran the E-W quarter line in Section 28, but didn't mention this corner. In 1980, former surveyor Kelly (CSM 2-98) shows this corner as a PK nail found. 06/13/96 D. Flusty, M. Keilcheski found RR spike in center of road, in line with fence/brush line to east. Dug with backhoe. Found nothing. Accepted RR spike as best location for corner and set 1½" x 36" iron pipe with 4" brass cap, 4' below road surface.

- (c) In the plan view drawing below, provide reference ties to at least 4 witness monuments, or, if the location is within a municipality, to at least 2 witness monuments. (Witness monuments shall be made of concrete, natural stone, iron or other equally durable material.) Describe witness monuments.

- (d) Show a plan view drawing depicting the relevant monuments and reference ties which is sufficient in detail to enable accurate relocation of the corner monument if the corner monument is disturbed. Indicate north.



### NOTES:

- 3/4" X 30" RE-BAR WITNESS SET
  - ⊥ POWER POLE
  - ⊥ VINYL SIGN POST SET
- BEARINGS ASSUMED & REFERENCED TO SECTION LINE SHOWN.

79

Describe any material discrepancy between the location of the corner as restored or reestablished and the location of that corner as previously restored or reestablished by distance and direction. Show the discrepancy on the plan view drawing under (d), above. Show the distances between the corner as previously restored or reestablished and (1) the corner as restored or reestablished, and (2) to at least 2 of the witness monuments shown on the drawing in (d), above.  
No discrepancy.

- (f) Was the corner restored through acceptance of (1) an obliterated evidence location, or, (2) a found perpetuated location?  
Found RR spike at center of CTH "S" and in line with old fence/brushline to east.

- (g & h) Was the corner reestablished through lost corner proportionate methods? If so, show the method, including the directions and distances to other public land survey corners used as evidence or used for proportioning in determining the corner location.

No.

Thu Dec 3 11:12:42 2020 D. Tlusty  
File> O:\Carlson Survey Projects\price.crd  
Langlade County Coordinates NAD83(2011) datum  
PointNo. Northing(Y) Easting(X) Description  
388 371553.64 657434.93 4321229 2000

*David E. Tlusty*  
*12/3/2020*

12/03/2020 D. Tlusty set ~~gearhead~~<sup>\*</sup> spike from ties; corner falls about 6 feet east of the existing centerline of CTH "S". Around 1997, the road was rebuilt and moved 6' to the west at this location. County grid bearing to corner to the south is S 1°40'56" W, dist. is 2674.60'.

\* BERNTSEN SN-1 SURVEY NAIL D.T.



- (i) I, David E. Tlusty, Langlade County Surveyor,  
(type or print name)

certify that the corner location shown on this record was determined by me or under my direction and control and that this U.S. Public Land Survey Monument Record is correct and complete to the best of my knowledge and belief.

*David E. Tlusty* 7/11/96  
Signature Date