

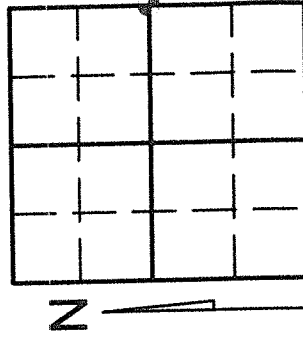
4321225 2000 2015

# U.S. PUBLIC LAND SURVEY MONUMENT RECORD

Note: This form is intended and designed to fulfill all requirements of Wisconsin Administrative Code, Chapter A-E 7.08 U.S. Public Land Survey Monument Record (3)(a)(b)(c)(d)(e)(f)(g)(h)(i). An additional sheet may be added if necessary to conform with said requirements.

(a) Corner location: Township 32 North  
Range 12 East/West

Town/City/Village PRICE  
County LANGLADE



Section 25

(b) (f) (g) (h) Description of monument found at this corner and if it was accepted, state all evidence (material, testimonial, occupational, plats, records, other monuments) used as a basis for accepting. If not accepted or if nothing was found, state evidence used as basis for establishing location. If reestablished through lost corner proportionate methods, indicate all monuments, distances and directions used to establish. Indicate type of monument found or set and sign post.

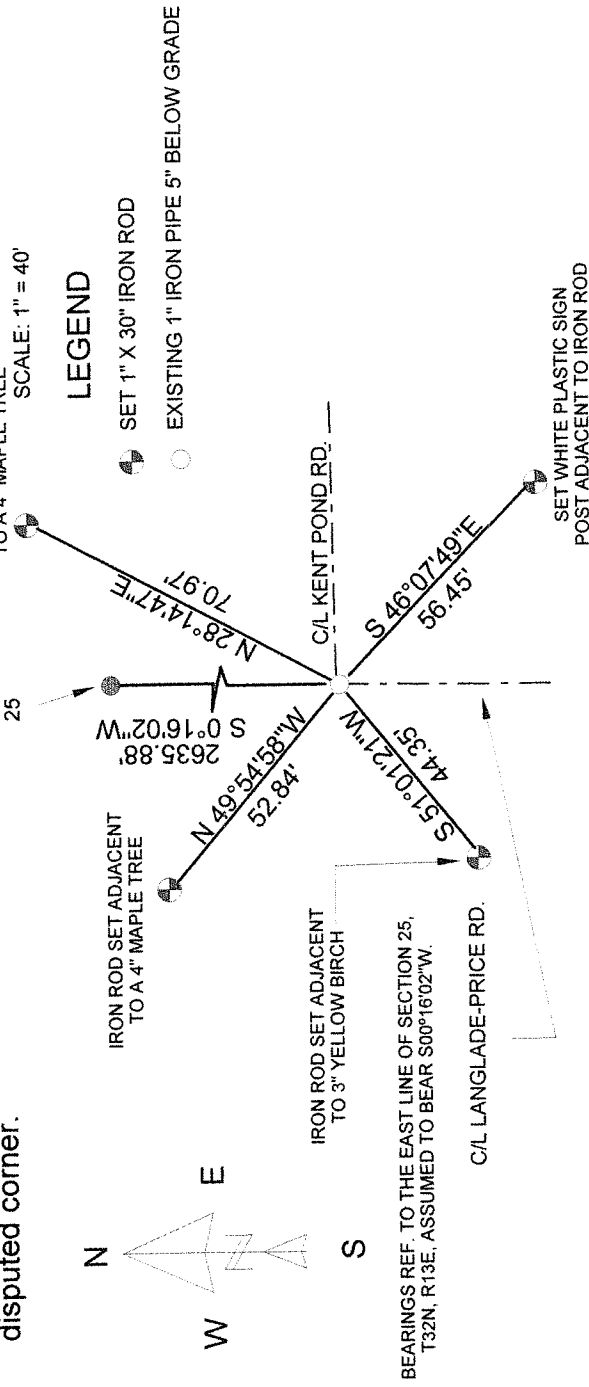
-1857- Alfred Millard set original corner

-1988- William Stuth indicates iron pipe or cap for the west 1/4 corner of section 30 and shows a distance of 2635.96 feet to the northwest corner of section 30, T32N, R13E.

-1988- William Kelley found corner by William Stuth and set a 3" aluminum witness corner

-2014- Kevin P. Bixby found a 1" iron pipe 5" below grade of Langlade Price Road and measured 2635.88' to the northeast corner of section 25 and witnessed as shown below.

(c) (d) (e) Plan view of corner with ties to at least 4 witness monuments. If in disagreement with previously established corner, show the distances between the two corners and also indicate the ties to the disputed corner.



(i) I, KEVIN P. BIXBY

(type or print name) certify that the corner location on this record was determined by me or under my direction and control and that this U.S. Public Land Survey Monument Record is correct and complete to the best of my knowledge and belief.

Kevin P. Bixby  
Signature

2/13/15  
Date

Stamp

Index No. \_\_\_\_\_

