

CERTIFIED LAND CORNER RESTORATION

32-12

Index No. 0-25

State of Wisconsin }
County of LANGLADE } ss.

History of original corner establishment:
No Evidence Found

I William F. Kelly, do hereby certify that on the 17th day of OCTOBER, 1979, I found evidence of the N 1/8 corner of SECT 24 19 Township 32, North, Range 13 E, Fourth Principal Meridian, as described hereon; and that from this evidence I established a new monument and accessories as described hereon to perpetuate the original location of this corner.

Description of corner evidence found:

ESTABLISHED CORNER AT MIDPOINT BETWEEN THE WEST 1/4 CORNER AND THE N.W. SECT CORNER OF SECT 19 T32N R13E

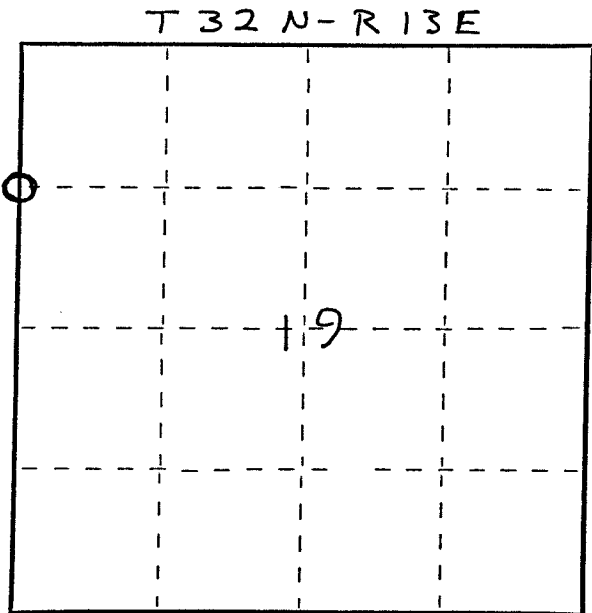
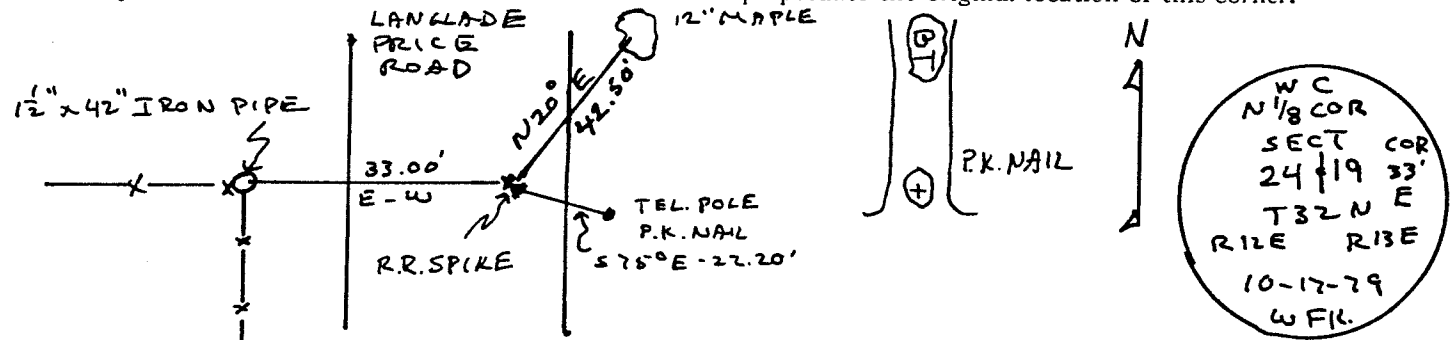
SET R.R. SPIKE IN PAVEMENT AND SET WIT. CUR 33' WEST.



W. F. Kelly

Resident witnesses:

Description of monument and accessories I established to perpetuate the original location of this corner.



Dated at ELCHO, Wis., this 17th day of OCTOBER, 1979

Signature William F. Kelly Title County Surveyor Registration No. 5-1098
(County Surveyor, Registered Land Surveyor, or other duly authorized official)

Office of Register of Deeds, County of _____, I hereby certify that the within instrument was filed in this office for record on the _____ day of _____, 19____ at _____ o'clock _____ M.

(Register of Deeds)

By _____ Deputy

○ = Corner monument restored.

FORM 985 H. C. MILLER CO., MILWAUKEE