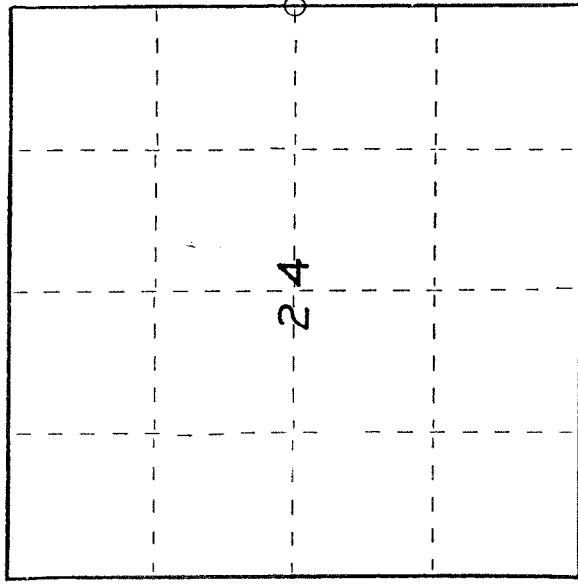


U. S. PUBLIC LAND SURVEY MONUMENT RECORD

I N S T R U C T I O N S :

This record shall show the location of the corner and shall include all of the following nine elements (a through i).

- (a) Identify the corner by reference to the U.S. public land survey system.
- = Corner monument restored.



EAST $\frac{1}{4}$ CORNER OF SEC. 24-32-12

- (b) Describe any record evidence, monument evidence, occupational evidence, testimonial evidence or any other material evidence you considered, and whether the monument was found or placed.

ORIGINAL SURVEY BY MCBRIDE IN 1857, NORTH BETWEEN SEC'S. 19 & 24, 40.0CH'S. SET $\frac{1}{4}$ POST, B.Ts. LYNN.14"N.70W.19LKS. YEL.BIR.18"S.40 E. 22LKS.
 RESTORATION SHEET INDEX NO.P-1, BY KELLY R.L.S. NO.1098, IN 1978, NO 2"X42" IRON PIPE WITH BRASS CAP AS STATED ON SHEET WAS FOUND. FOUND A 1 $\frac{1}{4}$ " DIA. IRON PIPE AT $\frac{1}{4}$ CORNER AND TWO B.Ts, 3RD WAS CUT DOWN.

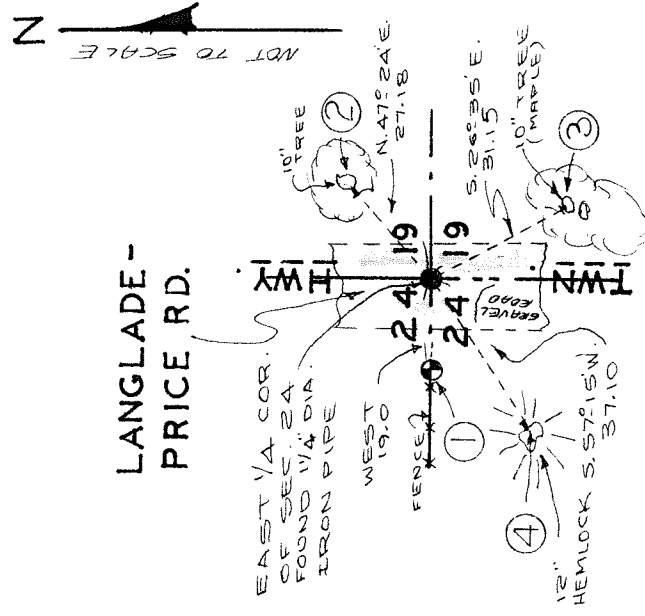
- (c) In the plan view drawing below, provide reference ties to at least 4 witness monuments, or, if the location is within a municipality, to at least 2 witness monuments. (Witness monuments shall be made of concrete, natural stone, iron or other equally durable material.) Describe witness monuments.

- (d) Show a plan view drawing depicting the relevant monuments and reference ties which is sufficient in detail to enable accurate relocation of the corner monument if the corner monument is disturbed. Indicate north.

WITNESS MONUMENTS

- ① - SET STANDARD COUNTY MONUMENT, 3 $\frac{1}{4}$ " DIA. CAP ALUMINUM CONST. STAMPED CORNER 19FT. EAST.
- ② - 40d NAIL SPIKE IN SW FACE OF TREE
- ③ - 40d NAIL SPIKE IN NW FACE OF TREE
- ④ - 40d NAIL SPIKE IN NE FACE OF TREE SCRIBED B.T.

**LANGLADE -
PRICE RD.**



(e) Describe any material discrepancy between the location of the corner as restored or reestablished and the location of that corner as previously restored or reestablished by distance and direction. Show the discrepancy on the plan view drawing under (d), above. Show the distances between the corner as previously restored or reestablished and (1) the corner as restored or reestablished, and (2) to at least 2 of the witness monuments shown on the drawing in (d), above.

NONE

(f) Was the corner restored through acceptance of (1) an obliterated evidence location, or, (2) a found perpetuated location?

(2)

(g&h) Was the corner reestablished through lost corner proportionate methods? If so, show the method, including the directions and distances to other public land survey corners used as evidence or used for proportioning in determining the corner location?

(i) I, WAYNE G. DOBBRATZ
(type or print name) certify that the corner location shown
on this record was determined by me or under my direction and
control and that this U.S. Public Land Survey Monument Record is
correct and complete to the best of my knowledge and belief.

Wayne G. Dobbratz
Signature

9/22/91
Date

Affix Land Surveyor Seal

