

CERTIFIED LAND CORNER RESTORATION

32-12

Index No. F-21

State of Wisconsin }
County of Langlade } ss.

I Raymond J. Hallisy, do hereby certify that on the 10th day of May, 1969, I found evidence of the W 1/4 corner of Section 24 Township 32 North, Range 12E, Fourth, Principal Meridian, as described hereon; and that from this evidence I established a new monument and accessories as described hereon to perpetuate the original location of this corner.

History of original corner establishment:

Description of corner evidence found:

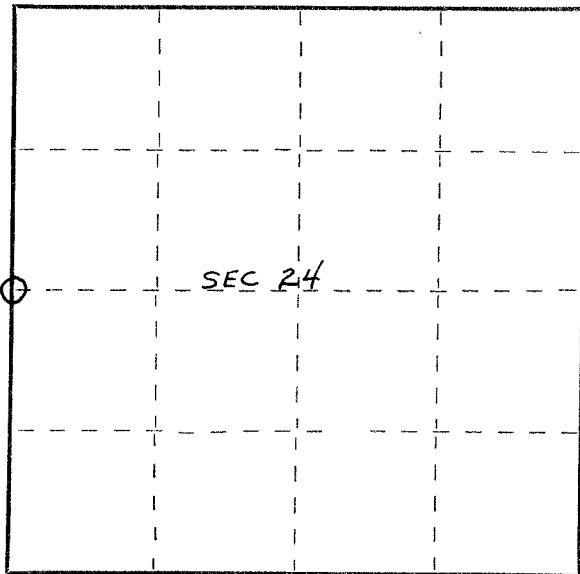
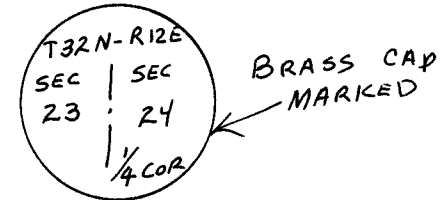
Found old sleigh shoe for corner in fence corner. Fence N & E.

Resident witnesses:

.....
.....
.....

Description of monument and accessories I established to perpetuate the original location of this corner.

Set 4" brass cap in cement
B.T.'s to corner
Hard Maple 7" N36W 9Ft. 9 inches
Hard Maple 8" S32E 26Ft. 5 inches
B.T.'s faced at base of tree and scribed BT



○ = Corner monument restored.

Dated at Antigo, Wis., this 10th day of May, 1969.

Signature: Raymond J. Hallisy Title: Reg. Land Surveyor Registration No. S-685
(County Surveyor, Registered Land Surveyor, or other duly authorized official)

Office of Register of Deeds, County of _____, I hereby certify that the within instrument was filed in this office for record on the _____ day of _____, 19____ at _____ o'clock _____ M.

.....
(Register of Deeds)

By..... Deputy