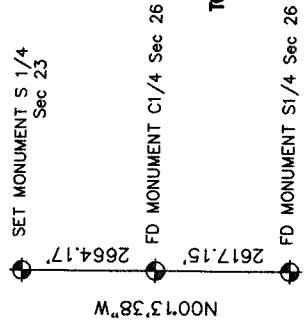
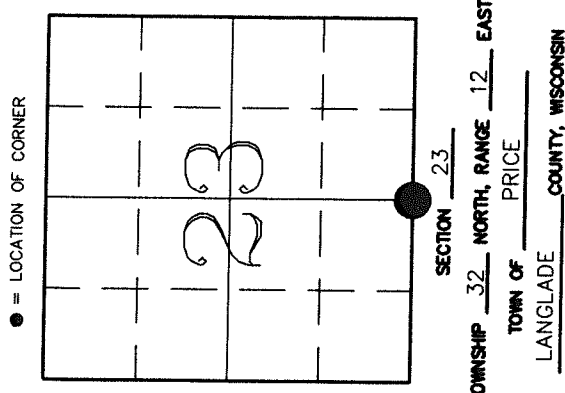


# U.S. PUBLIC LAND SURVEY MONUMENT RECORD

43212230020

**HISTORY OF ORIGINAL CORNER ESTABLISHMENT AND SUBSEQUENT RESTORATION AND DESCRIPTION OF ANY RECORD, MONUMENT OCCUPATIONAL, TESTIMONIAL OR OTHER EVIDENCE CONSIDERED:**

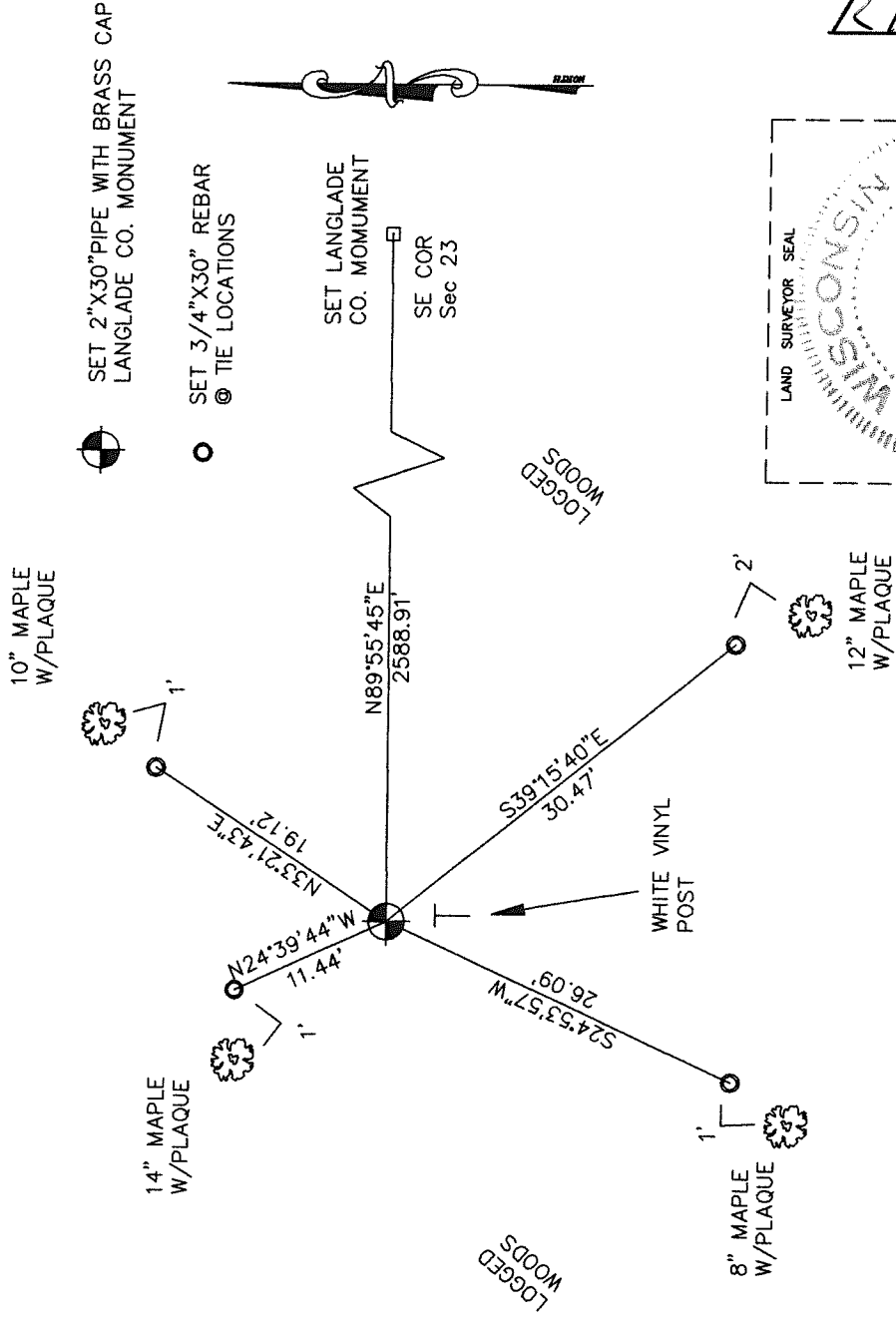
The original corner was established in 1857 by James McBride. Original Bearing Trees: Fir 8" S83E 16lks., Birch 8" N49W 36lks. County Surveyor Hutchinson, in early 1900's, visited the S1/4 of Section 23 running the N-S 1/4 line of Sec 26, with a distance of 80.02 chains. He set a location for the Center of Sec 26, as well as blazing two new BT's at the S1/4 of Sec 23: 8" Birch S821/2E 38 lks., 18" Sugar N71W 28lks. On 7/1/02, Gerry Bahar and Charlie Brinkmeier searched for corner and found no evidence. The location of the S 1/4 was established using Hutchinson's distance (5281.32') on the line from the S1/4 of Sec 26 through the C1/4. This location fits well with the SW and SE Corners of Sec 23.



**CORNER WAS: (CHECK ALL THAT APPLY)**

- RESTORED THROUGH ACCEPTANCE OF AN OBLITERATED EVIDENCE LOCATION
- RESTORED THROUGH ACCEPTANCE OF A FOUND PERPETUATED LOCATION
- CONSIDERED A LOST CORNER AND REESTABLISHED THROUGH LOST CORNER PROPORTIONATE METHODS (INCLUDE A PLAN VIEW DRAWING SHOWING DISTANCES AND DIRECTIONS TO OTHER PUBLIC LAND SURVEY CORNERS USED FOR PROPORTIONING AND DETERMINING THE CORNER LOCATION)
- RESTORED OR REESTABLISHED IN A LOCATION THAT DIFFERS FROM A PREVIOUS RESTORATION OR REESTABLISHMENT (INCLUDE A PLAN VIEW DRAWING AND INDICATE WHAT WAS SET AND/OR FOUND)
- CHECK IF THERE IS ADDITIONAL INFORMATION ON BACK

**DESCRIBE THE MONUMENT AND ACCESSORIES USED TO PERPETUATE THE LOCATION OF THE CORNER. (INCLUDE A PLAN VIEW DRAWING AND INDICATE WHAT WAS SET AND/OR FOUND) ALSO INCLUDE FOUR TIES TO THE SECTION CORNER AND DESCRIPTION OF THE TIES.**

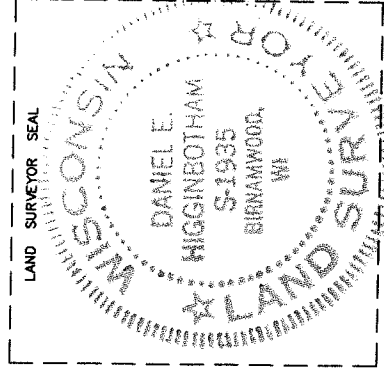


**DANIEL E. HIGGINBOTHAM**

(Type or print name) CERTIFY THAT THE CORNER LOCATION SHOWN ON THIS RECORD WAS DETERMINED BY ME OR UNDER MY DIRECTION AND CONTROL AND THAT THIS U.S. PUBLIC LAND SURVEY MONUMENT RECORD IS CORRECT AND COMPLETE TO THE BEST OF MY KNOWLEDGE AND BELIEF.

*Daniel E. Higginbotham*  
SIGNATURE

7/28/03  
DATE



R19

INDEX NO.