

4321220 2000

U.S. PUBLIC LAND SURVEY MONUMENT RECORD

(Prepared and as required by S. A-E 7.08 WI Administrative Code)

The EAST 1/4 corner of Section 20, T. 32 N., R. 12 E., Langlade County, WI
Corner was (check all that apply)

- Restored through acceptance of an obliterated evidence location.
- Restored through acceptance of a found perpetuated location.
- Determined to be lost and re-established through proportionate methods. (show bearings and distances to PLSS corners used for proportioning.)
- Restored/recovered/re-established in a location that differs from a previously established position. (Show difference in plan view below.)
- Check here if additional information is shown on the reverse side of this form.

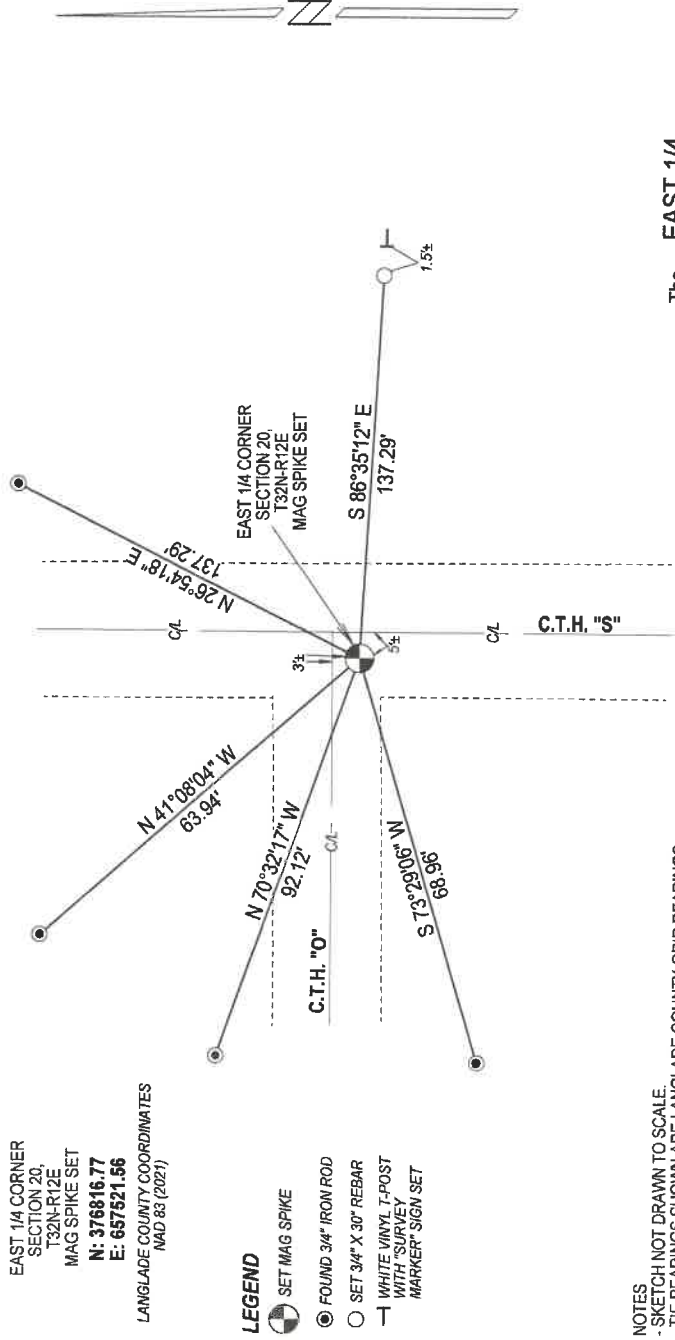
Describe record evidence, recovered physical evidence, occupational evidence, testimonial evidence, and all other evidence considered in the recovery/restoration of the corner.

1857 - Original corner established by James McBride - bearing trees: Lind, 14", N25°E, 26 links and a W. Pine, 14", S14°E, 22 links.
 1909 - M. Hutchinson used this corner for a survey in Section 21. He found roots of an original stump.
 1984 - W. Kelly "set 4" aluminum capped monument, as witness to corner location, railroad spike set over existing iron in the road.
 Corner location confirmed by resident property owners."
 1994 - D. Tlusty found "very old, rusted 1" x 18" iron rod bent in hook shape, upright in road at original ground level.
 Accepted as best evidence of corner location."
 2022 - Found railroad spike at corner location prior to road construction, verified location from existing ties set by Tlusty.
 Set a mag spike over railroad spike at corner location.

Physical description of the monument set:

Set a mag spike at corner location and tied it out as shown below.

Describe the accessories used to perpetuate the location of the corner. Include a plan view drawing and indicate accessories found/set. Describe measuring point on bearing trees. Show any topographic features that would aid in future recovery of the corner.



NOTES
 - SKETCH NOT DRAWN TO SCALE.
 - TIE BEARINGS SHOWN ARE LANGLADE COUNTY GRID BEARINGS.
 - ALL TIES MEASURED ELECTRONICALLY WITH TOTAL STATION.

The EAST 1/4
 Corner of Section 20
 T. 32 N., R. 12 E.
 Langlade County, WI



○ = Location of corner

SURVEYORS SEAL



I, Michael J. Hoffman, certify that the corner location shown on this record was determined by me or under my direction and control and that this U.S. Public Land Survey Monument Record is correct and complete to the best of my knowledge and belief.

Michael J. Hoffman Signature
12/12/2022 Date

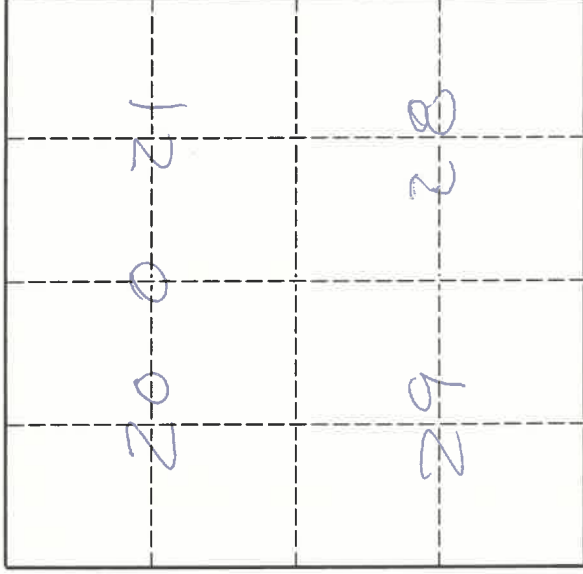
U. S. PUBLIC LAND SURVEY MONUMENT RECORD

I N S T R U C T I O N S:

This record shall show the location of the corner and shall include all of the following nine elements (a through i).

- (a) Identify the corner by reference to the U.S. public land survey system.
 O = Corner monument restored.

East Quarter corner of Section 20, Township 32 North, Range 12 East, Langlade County, Wisconsin.



T. 32 N., R. 12 E.

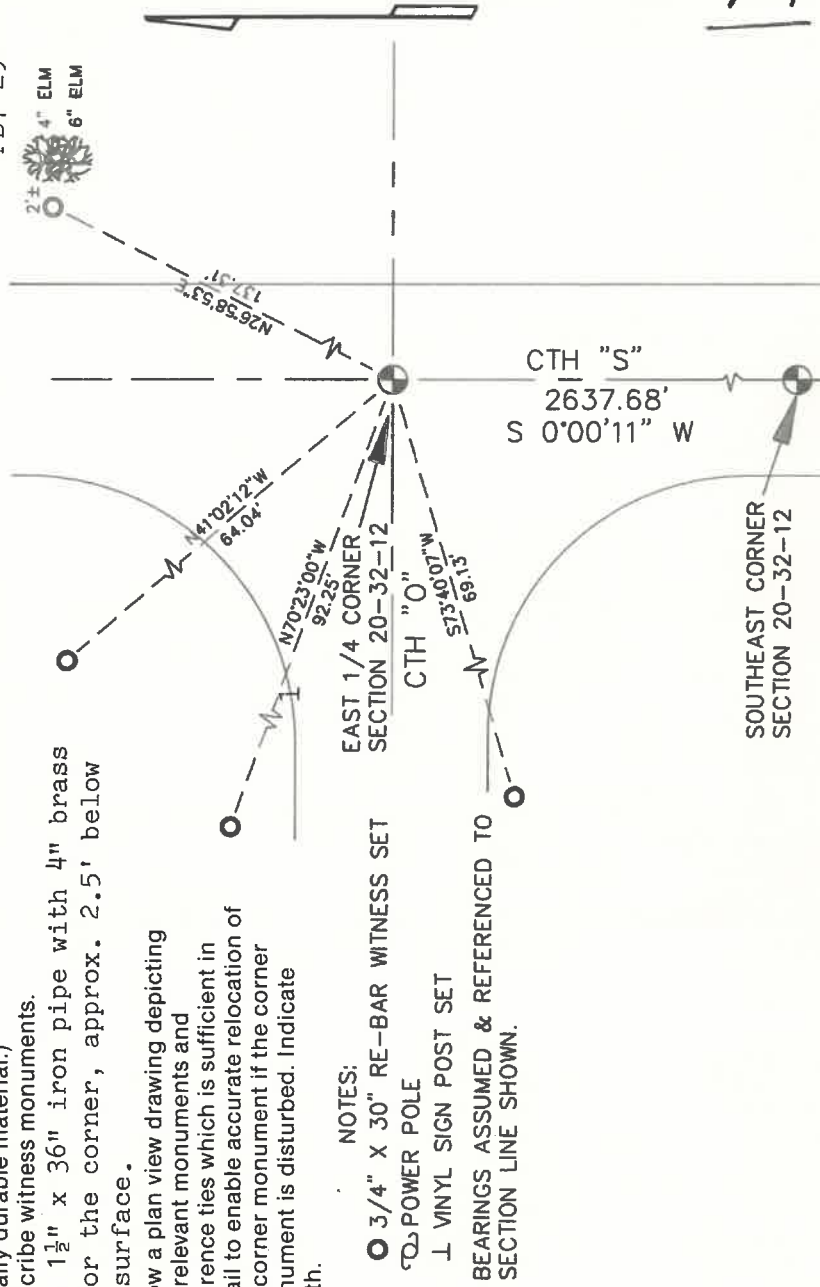
- (b) Describe any record evidence, monument evidence, occupational evidence, testimonial evidence or any other material evidence you considered, and whether the monument was found or placed.

The original corner was established in 1857 by James McBride. Original BT's: lind, 14", N25°E, 26 lks., and a W. pine, 14", S14°E, 22 lks. Malcolm Hutchinson used this corner in 1909 for a survey in Section 21. He found roots of an original stump. He measured 40.01 chains (2640.66') to the section corner to the south. In 1984, former surveyor Kelly "Set 4" aluminum capped monument, as witness to corner location R.R. spike set over existing iron in road. Corner location confirmed by resident property owners." 11/25/94 D. Tlusty made temporary ties to preserve the Kelly RR spike until it could be verified. 06/14/96 D. Tlusty, M. Kielcheski found very old, rusted 1" x 18" iron rod bent in hook shape, upright in road at original ground level. Accepted as best evidence of corner location.

- (c) In the plan view drawing below, provide reference ties to at least 4 witness monuments, or, if the location is within a municipality, to at least 2 witness monuments. (Witness monuments shall be made of concrete, natural stone, iron or other equally durable material.)

Describe witness monuments.
 Set a 1½" x 36" iron pipe with 4" brass cap for the corner, approx. 2.5' below road surface.

- (d) Show a plan view drawing depicting the relevant monuments and reference ties which is sufficient in detail to enable accurate relocation of the corner monument if the corner monument is disturbed. Indicate north.



NOTES:

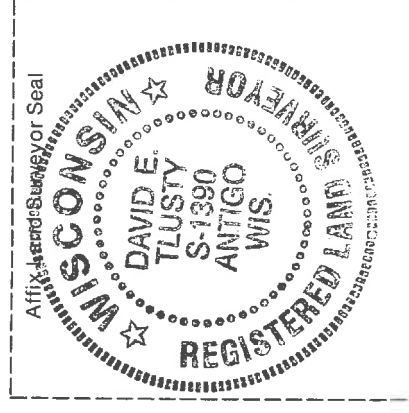
- 3/4" X 30" RE-BAR WITNESS SET
 - ⊥ POWER POLE
 - ⊥ VINYL SIGN POST SET
- BEARINGS ASSUMED & REFERENCED TO SECTION LINE SHOWN.

Describe any material discrepancy between the location of the corner as restored or reestablished and the location of that corner as previously restored or reestablished by distance and direction. Show the discrepancy on the plan view drawing under (d), above. Show the distances between the corner as previously restored or reestablished and (1) the corner as restored or reestablished, and (2) to at least 2 of the witness monuments shown on the drawing in (d), above.

The iron rod found is N 89°59' E, 0.4' from the RR spike of Kelly's.

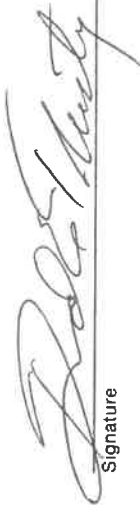
- (f) Was the corner restored through acceptance of (1) an obliterated evidence location, or, (2) a found perpetuated location?
A found perpetuated location.

- (g & h) Was the corner reestablished through lost corner proportionate methods? If so, show the method, including the directions and distances to other public land survey corners used as evidence or used for proportioning in determining the corner location.
No.



- (i) I, David E. Tlusty, Langlade County Surveyor,
(type or print name)

certify that the corner location shown on this record was determined by me or under my direction and control and that this U.S. Public Land Survey Monument Record is correct and complete to the best of my knowledge and belief.



Signature

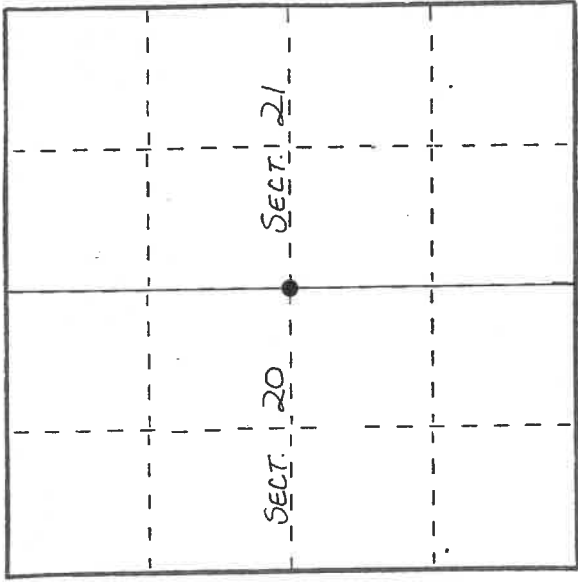
7/13/96

Date

U. S. PUBLIC LAND SURVEY MONUMENT RECORD

I N S T R U C T I O N S : This record shall show the location of the corner and shall include all of the following nine elements (a through i).

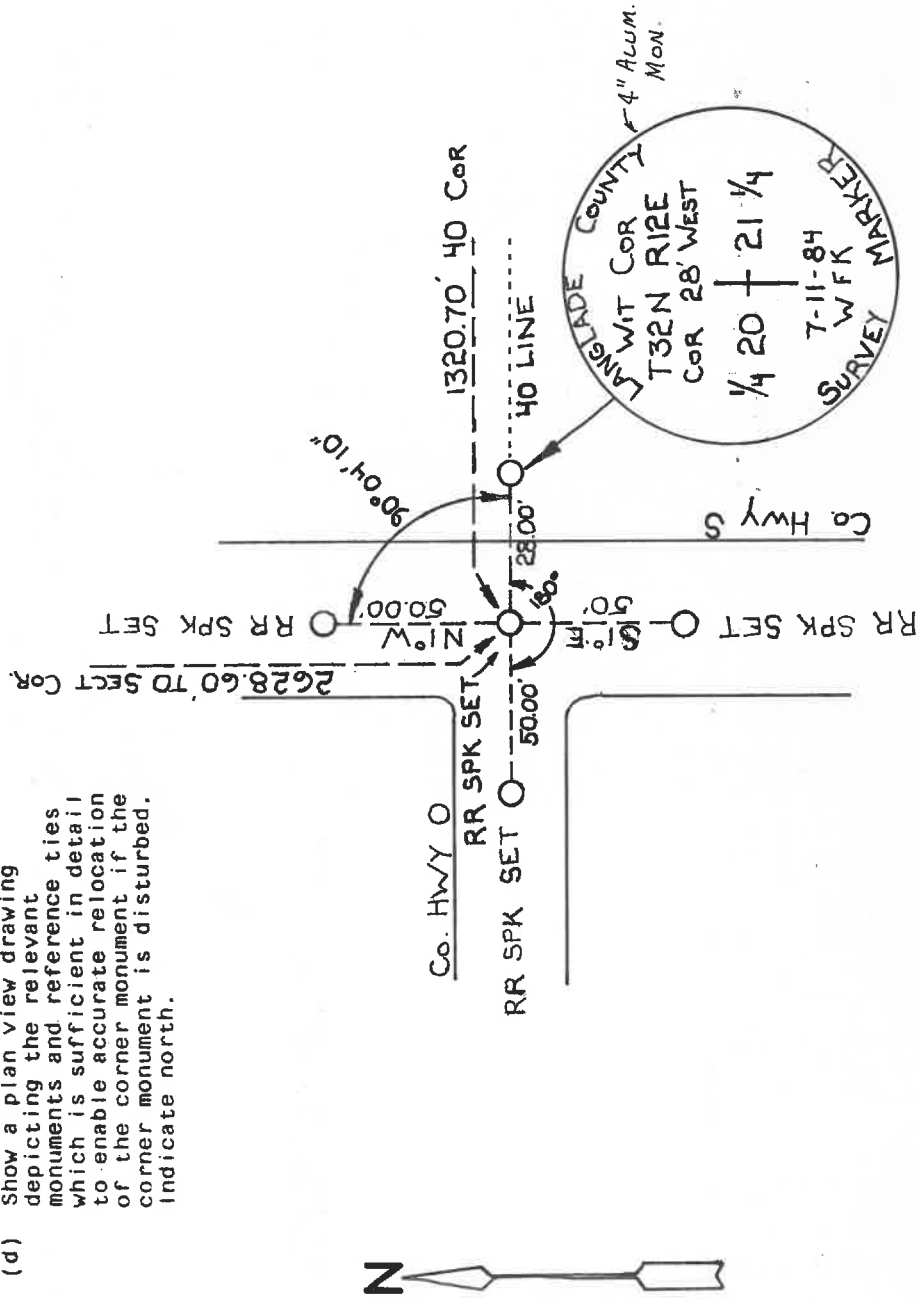
- (a) Identify the corner by reference to the U.S. public land survey system.
 O = Corner monument restored.
 ORIGINAL CORNER SET BY
 JAMES McBRIDE IN DEC., 1857.



- (b) Describe any record evidence, monument evidence, occupational evidence, testimonial evidence or any other material evidence you considered, and whether the monument was found or placed.
 SET 4" ALUMINUM CAPPED MONUMENT, AS WITNESS TO CORNER LOCATION
 R.R. SPIKE SET OVER EXISTING IRON IN ROAD. CORNER LOCATION
 CONFIRMED BY RESIDENT PROPERTY OWNER

- (c) In the plan view drawing below, provide reference ties to at least 4 witness monuments, or, if the location is within a municipality, to at least 2 witness monuments. (Witness monuments shall be made of concrete, natural stone, iron or other equally durable material.)
 Describe witness monuments.

- (d) Show a plan view drawing depicting the relevant monuments and reference ties which is sufficient in detail to enable accurate relocation of the corner monument if the corner monument is disturbed. Indicate north.



(e) Describe any material discrepancy between the location of the corner as restored or reestablished and the location of that corner as previously restored or reestablished by distance and direction. Show the discrepancy on the plan view drawing under (d), above. Show the distances between the corner as previously restored or reestablished and (1) the corner as restored or reestablished, and (2) to at least 2 of the witness monuments shown on the drawing in (d), above.

Note

(f) Was the corner restored through acceptance of (1) an obliterated evidence location, or, (2) a found perpetuated location?

(1)

(g&h) Was the corner reestablished through lost corner proportionate methods? If so, show the method, including the directions and distances to other public land survey corners used as evidence or used for proportioning in determining the corner location?

No.

(1) I, WILLIAM F. KELLY (type or print name) certify that the corner location shown on this record was determined by me or under my direction and control and that this U.S. Public Land Survey Monument Record is correct and complete to the best of my knowledge and belief.

William F. Kelly
Signature

7-11-84
Date

