

U.S. PUBLIC LAND SURVEY MONUMENT RECORD

(Prepared and as required by S. A-E 7.08 WI Administrative Code)

The SOUTH 1/4 corner of Section 20, T. 32 N., R. 12 E., Langlade County, WI
Corner was (check all that apply)

- Restored through acceptance of an obliterated evidence location.
- Restored through acceptance of a found perpetuated location.
- Determined to be lost and re-established through proportionate methods. (show bearings and distances to PLSS corners used for proportioning.)
- Restored/recovered/re-established in a location that differs from a previously established position. (Show difference in plan view below.)
- Check here if additional information is shown on the reverse side of this form.

Describe record evidence, recovered physical evidence, occupational evidence, testimonial evidence, and all other evidence considered in the recovery/restoration of the corner.

1857 - Original corner established by J. McBride - bearing trees: Birch, 18", N37°E, 33 links; Birch, 10", S47°E, 10 links.

2023 - I searched the area for any remaining evidence of original corner. I re-established corner straightline between the SW and SE Section Corners and centerline of Jones Road. I believe this to be the best perpetuation of the original corner location. I set a mag spike at corner location, and set witness monuments as shown below.

Physical description of the monument set:

Set mag spike at corner location and tied out as shown below.

Describe the accessories used to perpetuate the location of the corner. Include a plan view drawing and indicate accessories found/set. Describe measuring point on bearing trees. Show any topographic features that would aid in future recovery of the corner.

SOUTH 1/4 CORNER

SECTION 20,

T32N-R12E

MAG SPIKE SET

N: 374225.01

E: 654899.66

LANGLADE COUNTY COORDINATES

NAD 83 (2011)

OBSERVED 05-15-2023

RTK GPS

LEGEND

● MAG SPIKE SET

○ SET 1.05" O.D. X .24"

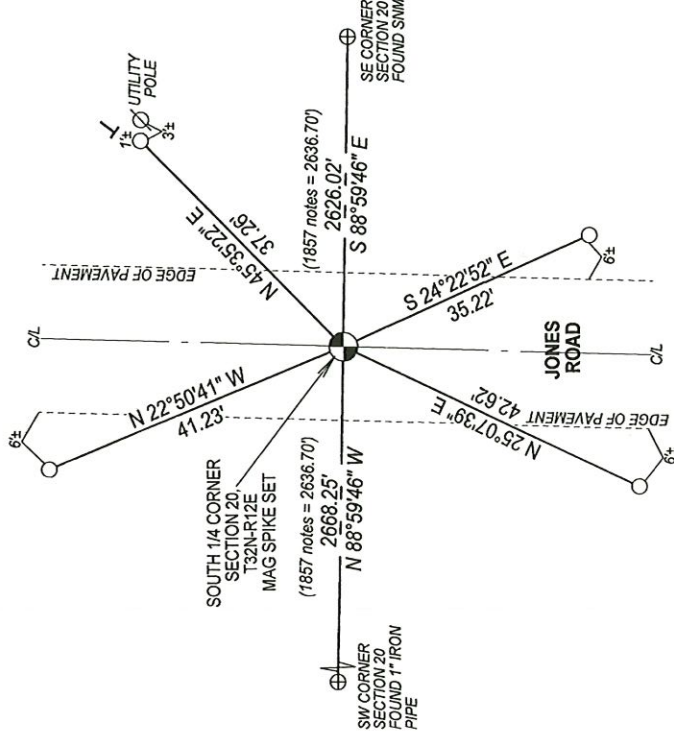
IRON PIPE WEIGHING

1.13 LBS/LF

→ WHITE VINYL T-POST

WITH SURVEY

MARKER SIGN SET



NOTES
- SKETCH NOT DRAWN TO SCALE.
- TIE BEARINGS SHOWN ARE LANGLADE COUNTY GRID BEARINGS.
- ALL TIES MEASURED ELECTRONICALLY WITH TOTAL STATION.

SURVEYORS SEAL



I, Michael J. Hoffman certify that the corner location shown on this record was determined by me or under my direction and control and that this U.S. Public Land Survey Monument Record is correct and complete to the best of my knowledge and belief.

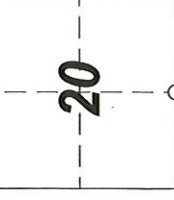
Michael J. Hoffman Date 01/18/2024

The SOUTH 1/4

Corner of Section 20

T. 32 N., R. 12 E.

Langlade County, WI



○ = Location of corner

INDEX No. R-7 4321220 0020