

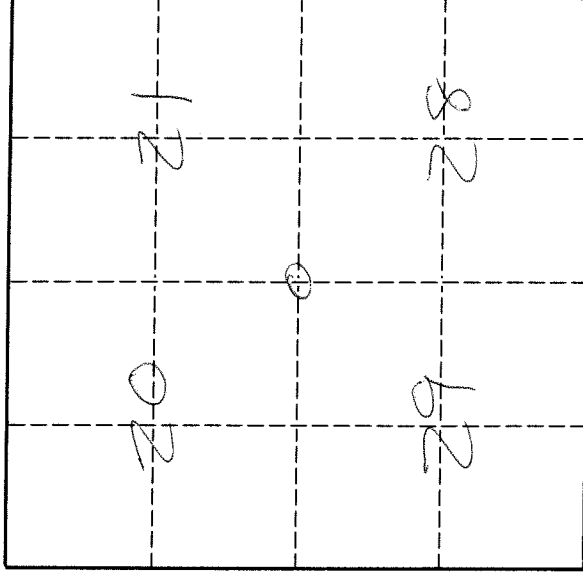
U. S. PUBLIC LAND SURVEY MONUMENT RECORD

I N S T R U C T I O N S:

This record shall show the location of the corner and shall include all of the following nine elements (a through i).

- (a) Identify the corner by reference to the U.S. public land survey system.
 O = Corner monument restored.

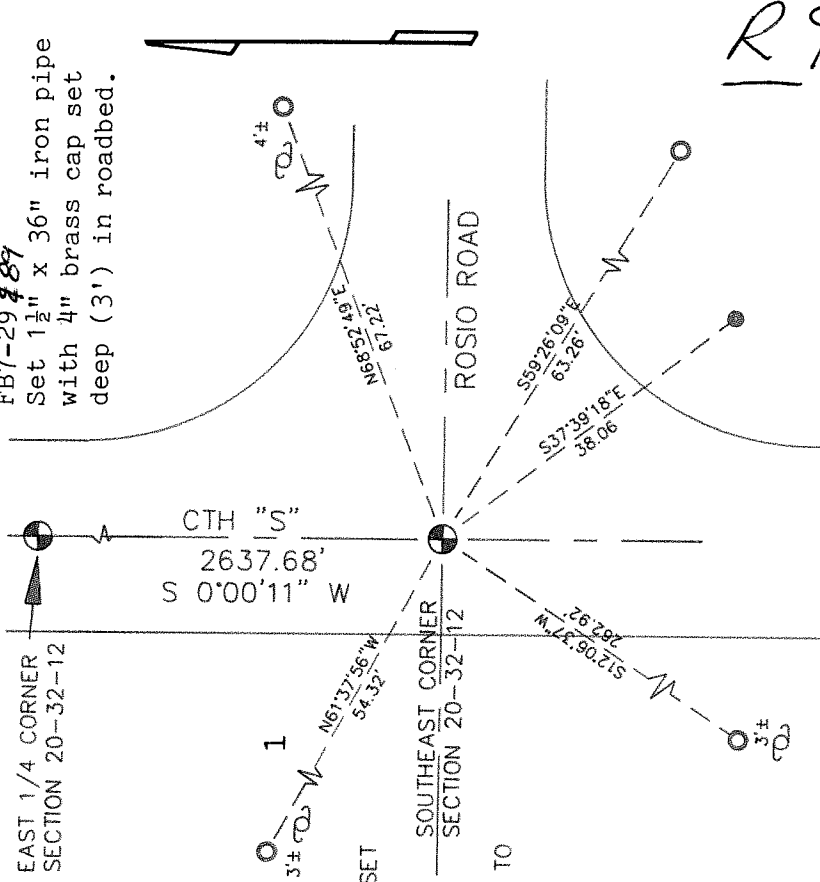
The Southeast corner of Section 20, Township 32 North, Range 12 East, Langlade County, Wisconsin.



T. 32 N., R. 12 E.

- (b) Describe any record evidence, monument evidence, occupational evidence, testimonial evidence or any other material evidence you considered, and whether the monument was found or placed.
 The original corner was established in 1857 by James McBride. Original BT's: elm, 8", N72°W, 59 lks., birch, 6", N44°E, 26 lks., W. pine, 8", N69°E, 53 lks., and an elm, 6", S39°W, 39 lks. Malcolm Hutchinson used this corner in 1909 for a survey in Section 21, but didn't describe it. He measured 2640.66' to the quarter corner to the North. In 1984, former surveyor Kelly "Located R/R spike at road intersection identified as corner location on Hgw dwg. and by residents set witness monument" 11/25/94 D. Tlusty made temporary ties to preserve the Kelly RR spike until it could be verified. 06/14/96 D. Tlusty, M. Kielcheski found 3/4" x 24" iron rod formed square on top and flat on the bottom, upright in road at original ground level. Accepted found rod as best evidence of corner location.

- (c) In the plan view drawing below, provide reference ties to at least 4 witness monuments, or, if the location is within a municipality, to at least 2 witness monuments. (Witness monuments shall be made of concrete, natural stone, iron or other equally durable material.)
 Describe witness monuments.



- (d) Show a plan view drawing depicting the relevant monuments and reference ties which is sufficient in detail to enable accurate relocation of the corner monument if the corner monument is disturbed. Indicate north.

- NOTES:
 ○ 3/4" X 30" RE-BAR WITNESS SET
 ● 1" OD IRON PIPE FOUND
 ⊕ POWER POLE
 ⊥ VINYL SIGN POST SET
 BEARINGS ASSUMED & REFERENCED TO SECTION LINE SHOWN.

R9

Describe any material discrepancy between the location of the corner as restored or reestablished and the location of that corner as previously restored or reestablished by distance and direction. Show the discrepancy on the plan view drawing under (d), above. Show the distances between the corner as previously restored or reestablished and (1) the corner as restored or reestablished, and (2) to at least 2 of the witness monuments shown on the drawing in (d), above.

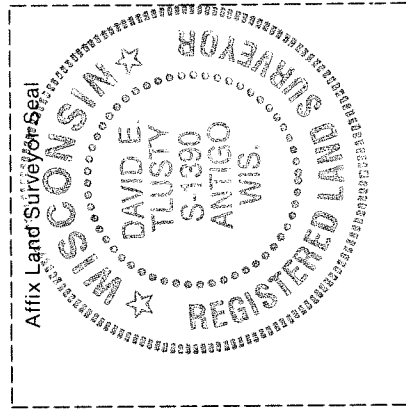
The iron rod found is S 59°24' E, 0.3' from RR spike of Kelly's.

(f) Was the corner restored through acceptance of (1) an obliterated evidence location, or, (2) a found perpetuated location.?

A found perpetuated location.

(g & h) Was the corner reestablished through lost corner proportionate methods? If so, show the method, including the directions and distances to other public land survey corners used as evidence or used for proportioning in determining the corner location.

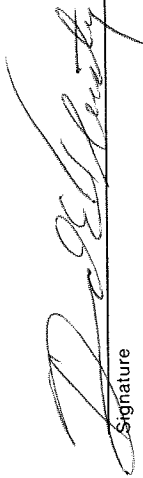
No.



(i) I, David E. Tlusty, Langlade County Surveyor,

(type or print name)

certify that the corner location shown on this record was determined by me or under my direction and control and that this U.S. Public Land Survey Monument Record is correct and complete to the best of my knowledge and belief.



Signature

7/13/96

Date