

U.S. PUBLIC LAND SURVEY MONUMENT RECORD

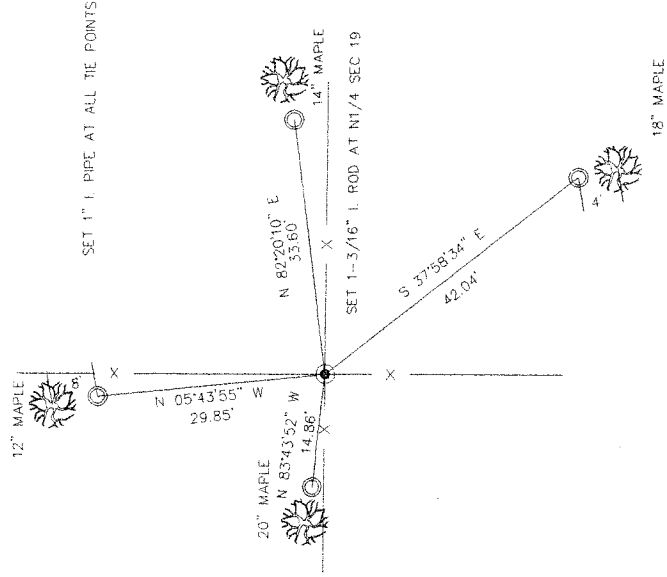
HISTORY OF ORIGINAL CORNER ESTABLISHMENT AND SUBSEQUENT RESTORATION AND DESCRIPTION OF ANY RECORD, MONUMENT OCCUPATIONAL, TESTIMONIAL OR OTHER EVIDENCE CONSIDERED:

This corner was originally established in 1857 by James McBride. We reestablished the location due to some survey work in the Northeast 1/4 of Section 19. To reestablish the North 1/4 Corner of Section 19, we used existing fence line evidence at the North 1/4 Corner of Section 19 in addition to a found plough point which is at the Northwest Corner of the Northeast 1/4 of the Northeast 1/4. Using the distance and bearing from the Northeast Corner of Section 19 through the Northwest Corner of the NE 1/4 of the NE 1/4 and doubling that bearing and distance to the West, that location fit very well with the existing fenceline-fenceline intersection.

CORNER WAS: (CHECK ALL THAT APPLY)

- RESTORED THROUGH ACCEPTANCE OF AN OBLITERATED EVIDENCE LOCATION
- RESTORED THROUGH ACCEPTANCE OF A FOUND PERPETUATED LOCATION
- CONSIDERED A LOST CORNER AND REESTABLISHED THROUGH LOST CORNER PROPORTIONATE METHODS (INCLUDE A PLAN VIEW DRAWING SHOWING DISTANCES AND DIRECTIONS TO OTHER PUBLIC LAND SURVEY CORNERS USED FOR PROPORTIONING AND DETERMINING THE CORNER LOCATION)
- RESTORED OR REESTABLISHED IN A LOCATION THAT DIFFERS FROM A PREVIOUS RESTORATION OR REESTABLISHMENT (INCLUDE A PLAN VIEW DRAWING AND INDICATE WHAT WAS SET AND/OR FOUND)
- CHECK IF THERE IS ADDITIONAL INFORMATION ON BACK

DESCRIBE THE MONUMENT AND ACCESSORIES USED TO PERPETUATE THE LOCATION OF THE CORNER. (INCLUDE A PLAN VIEW DRAWING AND INDICATE WHAT WAS SET AND/OR FOUND) ALSO INCLUDE FOUR TIES TO THE SECTION CORNER AND DESCRIPTION OF THE TIES.

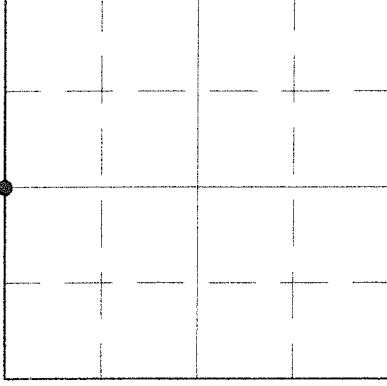


NOTE: AFTER FIELD CHECKING THIS, IT APPEARS THAT THIS IRON ROD DOESNT WORK WITH THE TIES. BE CAREFUL IF USING.

D. Higginbotham
5/23/01

32 12 18 00 20

● = LOCATION OF CORNER



SECTION 19
TOWNSHIP 32 NORTH, RANGE 12 EAST
TOWN OF PRICE
LANGLADE COUNTY, WISCONSIN

DANIEL E. HIGGINBOTHAM

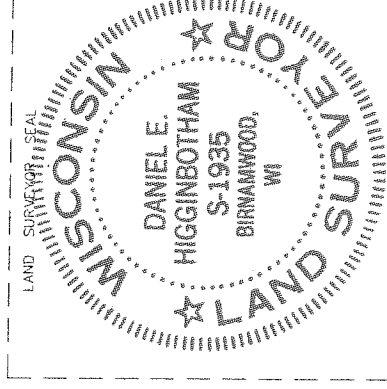
(Type or print name) CERTIFY THAT THE CORNER LOCATION SHOWN ON THIS RECORD WAS DETERMINED BY ME OR UNDER MY DIRECTION AND CONTROL AND THAT THIS U.S. PUBLIC LAND SURVEY MONUMENT RECORD IS CORRECT AND COMPLETE TO THE BEST OF MY KNOWLEDGE AND BELIEF.

Daniel Higginbotham

12/2/96

SIGNATURE

DATE



N3

INDEX NO.