

4321218 0000

U.S. PUBLIC LAND SURVEY MONUMENT RECORD

(Prepared and as required by S. A-E 7.08 WI Administrative Code)

The SOUTHEAST corner of Section 18, T. 32 N., R. 12 E., Langlade County, WI
Corner was (check all that apply)

- Restored through acceptance of an obliterated evidence location.
- Restored through acceptance of a found perpetuated location.
- Determined to be lost and re-established through proportionate methods. (show bearings and distances to PLSS corners used for proportioning.)
- Restored/recovered/re-established in a location that differs from a previously established position. (Show difference in plan view below.)
- Check here if additional information is shown on the reverse side of this form.

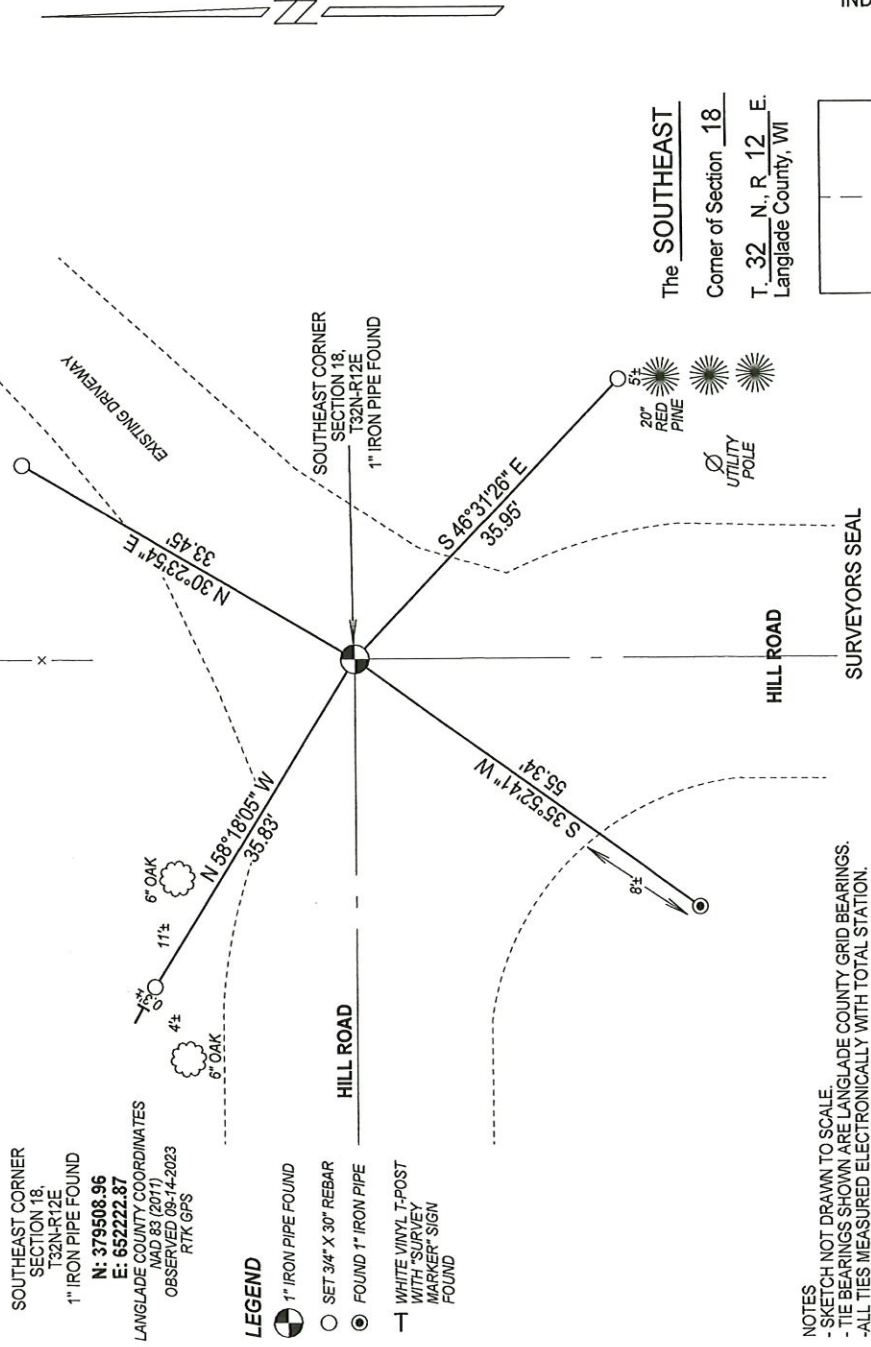
Describe record evidence, recovered physical evidence, occupational evidence, testimonial evidence, and all other evidence considered in the recovery/restoration of the corner.

- 1857 - Original corner established by J. McBride - bearing trees: Sugar, 15", N8°W, 43 links; Sugar, 12", N15°E, 30 links; Sugar, 16", S10°E, 7 links and Sugar, 10", S44°W, 46 links.
- 1990 - William Kelly found "PK nail in road c/l & fenceline intersection." Kelly made ties and filed a tie sheet.
- 1996 - Daniel Higginbotham per CSM Vol. 7 Pg. 074, notes he found a 1.5" iron rod 12" below surface, set 1" iron pipe on top.
- 2023 - I found existing 1" iron pipe 2" below road surface set by Higginbotham. Corner falls in line with a fenceline to the north and approximate c/l of Hill road in driveway.

Physical description of the monument set:

Accepted found 1" iron pipe as corner location and tied out as shown below.

Describe the accessories used to perpetuate the location of the corner. Include a plan view drawing and indicate accessories found/set. Describe measuring point on bearing trees. Show any topographic features that would aid in future recovery of the corner.



INDEX No. **N - 5** 4321218 0000

I, Michael J. Hoffman, certify that the corner location shown on this record was determined by me or under my direction and control and that this U.S. Public Land Survey Monument Record is correct and complete to the best of my knowledge and belief.

Michael Hoffman Signature
09-15-2023 Date

Describe any material discrepancy between the location of the corner as restored or reestablished and the location of that corner as previously restored or reestablished by distance and direction. Show the discrepancy on the plan view drawing under (d), above. Show the distances between the corner as previously restored or reestablished and (1) the corner as restored or reestablished, and (2) to at least 2 of the witness monuments shown on the drawing in (d), above.

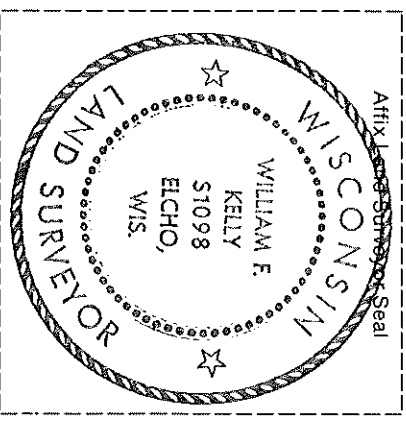
NONE

- (f) Was the corner restored through acceptance of (1) an obliterated evidence location, or, (2) a found perpetuated location?
(2)

- (g & h) Was the corner reestablished through lost corner proportionate methods? If so, show the method, including the directions and distances to other public land survey corners used as evidence or used for proportioning in determining the corner location.

Nb.

- (i) I, WILLIAM F. KELLY (Type or print name) RLS 1098
certify that the corner location shown on this record was determined by me or under my direction and control and that this U.S. Public Land Survey Monument Record is correct and complete to the best of my knowledge and belief.



Signature William F. Kelly Date 2/14/90