

43212170020

U.S. PUBLIC LAND SURVEY MONUMENT RECORD

(Prepared and as required by S. A-E 7.08 WI Administrative Code)

The N 1/4 corner of Section 20, T. 32 N., R. 12 E., Langlade County, WI

Corner was: (check all that apply)

- Restored through acceptance of an obliterated evidence location
- Restored through acceptance of a found perpetuated location.
- Determined to be lost and re-established through proportionate methods.
(Show bearings and distance to PLSS corners used for proportioning.)
- Restored/recovered in a location that differs from a previously established position.
(Show difference in plan view below.)

Check here if additional information is shown on the reverse side of this form.

Describe record evidence, recovered physical evidence, occupational evidence, testimonial evidence and all other evidence considered in the recovery/restoration of the corner.

1857- Corner originally set by James McBride. BTs: Elm 8" N12E 30 links, Ironwood 8" S6W 38 links

1915- Hutchinson surveyed S on 1/4 line of Section 17- @ 7979 "hit 1/4 post stake set by myself 1906. One orig BT dead"

1915- Brooks? Surveyed N-S 1/4 line of Section 20. "3965 from center to N 1/4 post"

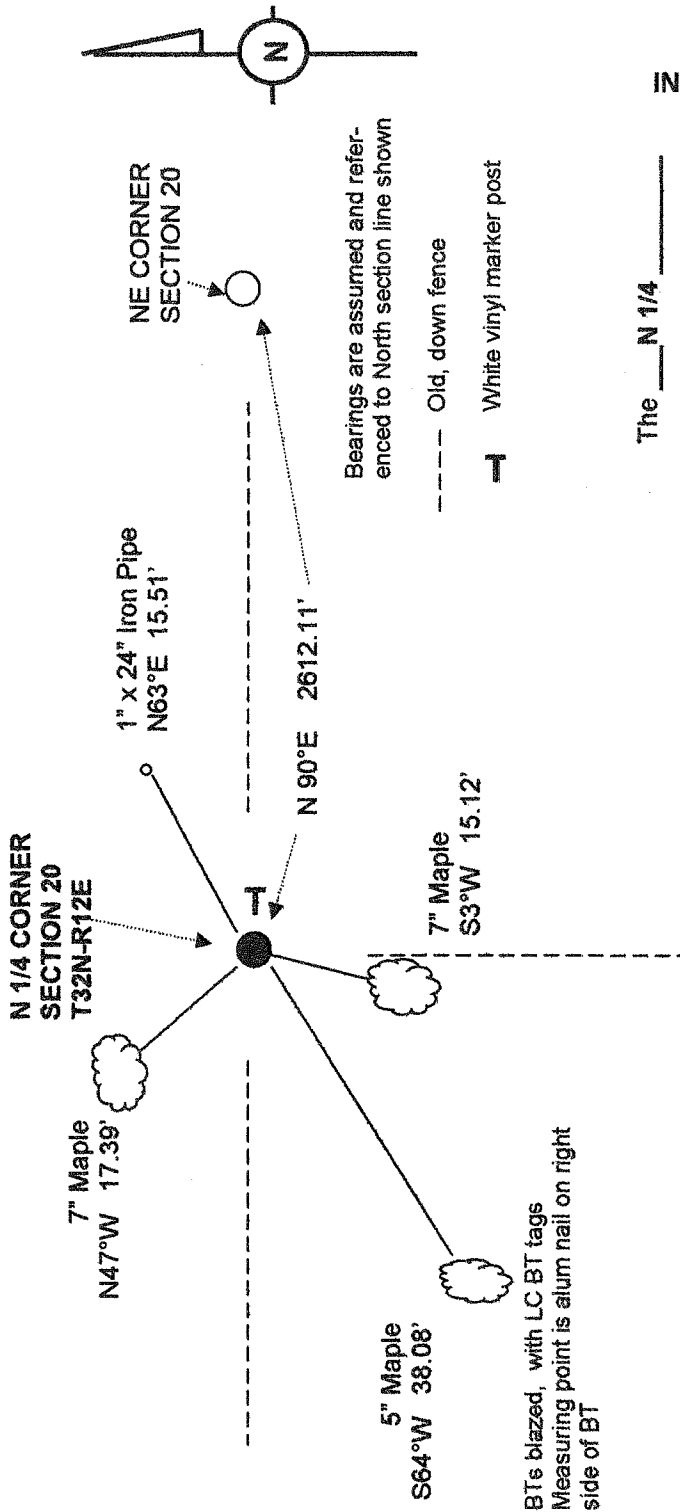
1922- Hutchinson surveyed the N Section line to 1/4 post. BT Oak 12" N48E 9 1/2 links

2004- I found a 3" diameter pointed stake 25" long at the corner of downed fences to east, west, and south. The above-ground portion of the stake had rotted away. Found a dead 12" oak stump n48E 9>5'. I accepted the evidence as the post set in 1906 and best evidence of the original corner location.

Physical description of the monument set:

Standard 2.375" x 30" Iron Pipe with 3.25" Langlade County Brass Cap

Describe the accessories used to perpetuate the location of the corner. Include a plan view drawing and indicate accessories found set. Describe measuring point on bearing trees. Show any topographic features that would aid in future recovery of the corner.



BTs blazed, with LC BT tags
Measuring point is alum nail on right side of BT

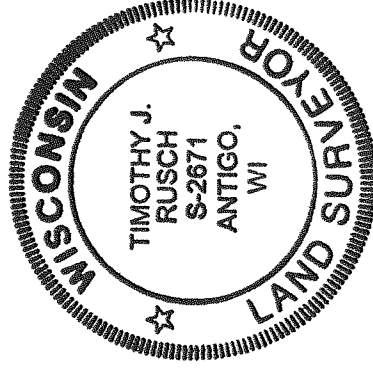
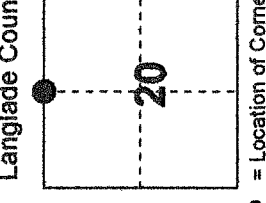
The N 1/4

SURVEYOR'S SEAL

Corner of Section 20

T. 32 N., R. 12 E.
Langlade County, WI

INDEX NO. ~~N-11~~ ^{N7} 32-12



I, Timothy J Rusch, certify that the Corner location shown on this record was determined by me or under my direction and control and that this U.S. Public Land Survey Monument Record is correct And complete to the best of my knowledge and belief.

Timothy J Rusch 12-10-2004
Signature Date