

4321217 0000

# U.S. PUBLIC LAND SURVEY MONUMENT RECORD

(Prepared and as required by S. A-E 7.08 WI Administrative Code)

The NE corner of Section 20, T. 32 N., R. 12 E, Langlade County, WI

**Corner was: (check all that apply)**

- Restored through acceptance of an obliterated evidence location
- Restored through acceptance of a found perpetuated location
- Determined to be lost and re-established through proportionate methods.  
(Show bearings and distance to PLSS corners used for proportioning.)
- Restored/recovered in a location that differs from a previously established position.  
(Show difference in plan view below.)

Check here if additional information is shown on the reverse side of this form.

**Describe record evidence, recovered physical evidence, occupational evidence, testimonial evidence and all other evidence considered in the recovery/restoration of the corner.**

1857- Corner originally set by James McBride. BTs: Sugar 10" N60W 17 links; Ironwood 6" N75E 65 links; Birch 8" S67E 36 links; Sugar 10" S60W 54 links

1922- Hutchinson surveyed from NE corner west to N 1/4 corner

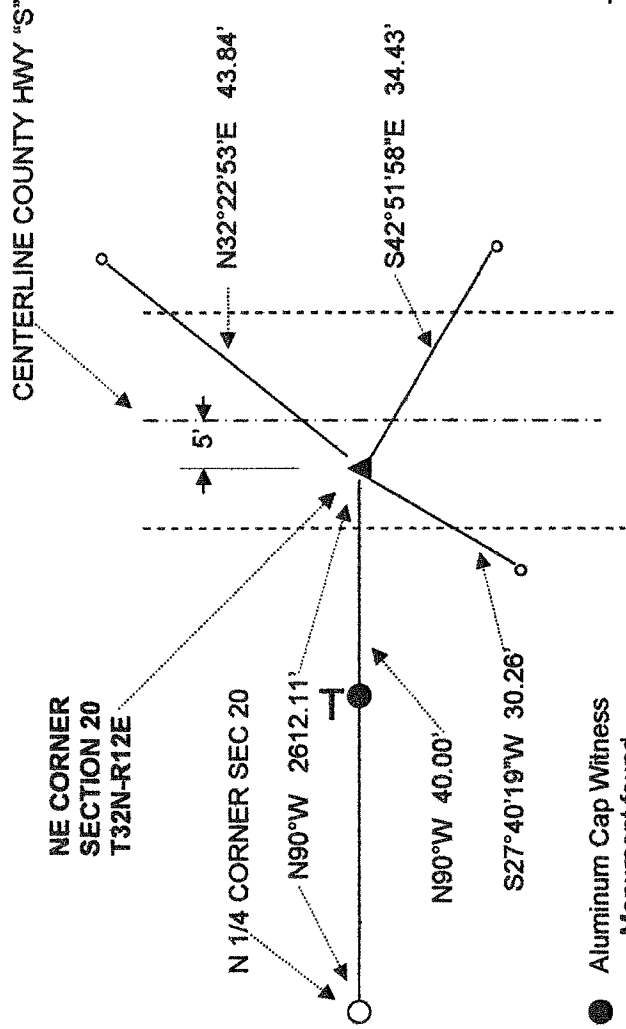
1984- W F Kelly "set RR spike over existing iron in road". Set RR spike ties at N0E, 50.00' and at S0E 50.00'; and aluminum witness monuments at N90E, 40.00' and at N90W, 40.00'

2004- I found one aluminum witness monument on west side of County Road "S". Good alignment with old fences on east and west sides of road. County "S" was rebuilt in recent years, including significant grade change, likely destroying the corner and other ties. I re-set corner from Kelly's witness monument and set new ties.

**Physical description of the monument set:**

I set a 4 1/2" Gear-Headed Spike in the pavement.

**Describe the accessories used to perpetuate the location of the corner. Include a plan view drawing and indicate accessories found/set. Describe measuring point on bearing trees. Show any topographic features that would aid in future recovery of the corner.**



● Aluminum Cap Witness Monument found

○ 3/4 x 30" Re-bar Witness set

— White Vinyl Marker Post

The NE

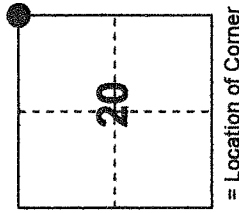
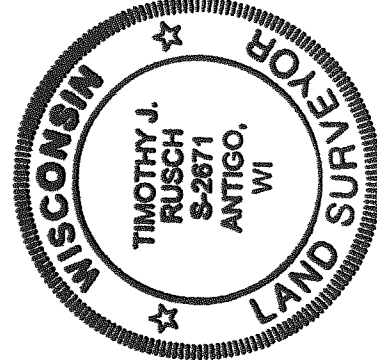
Corner of Section 20

T 32 N, R 12 E  
Langlade County, WI

SURVEYORS SEAL

I, Timothy J Rusch, certify that the Corner location shown on this record was determined By me or under my direction and control and that this U.S. Public Land Survey Monument Record is correct And complete to the best of my knowledge and belief.

Timothy J Rusch 12-10-2004  
Signature Date



● = Location of Corner

INDEX NO. **N-9 32-12**

Bearings Assumed-  
Referenced to  
North Section Line  
shown

