

CERTIFIED LAND CORNER RESTORATION

Index No. L-17  
3212

State of Wisconsin }  
County of Langlade } ss.

I Raymond J. Hallisy, do hereby certify that on the 29th day of April, 1978, I found evidence of the 1/4 corner of Section 14 & 15 Township 32, North, Range 12E, Fourth Principal Meridian, as described hereon; and that from this evidence I established a new monument and accessories as described hereon to perpetuate the original location of this corner.

Resident witnesses:

.....  
.....  
.....

History of original corner establishment:

Corner set in the 1930 resurvey.

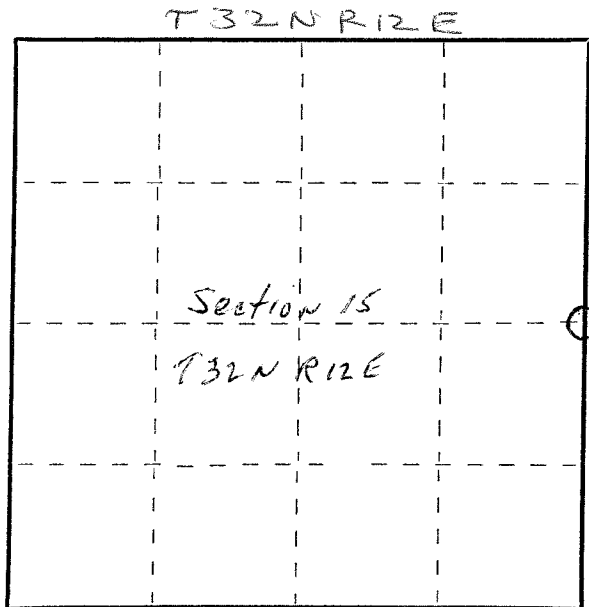
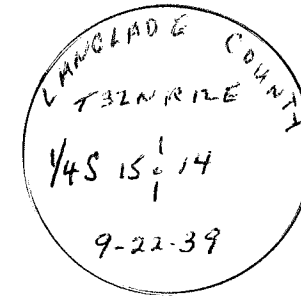
Description of corner evidence found:

4" iron pipe with brass cap, rock mound,  
Old BT Hard Maple 16" S31W 33' 2"

Description of monument and accessories I established to perpetuate the original location of this corner.

New BT's

7" Rock Elm S63E ~~6' 7"~~ 6' 7"  
7" Cherry N10E ~~3' 8"~~ 3' 8"  
6" Cherry S15E 16' 7"



○ = Corner monument restored.

Dated at Antigo, Wis., this 29th day of April, 1978.

Signature Raymond J. Hallisy Title Reg. Land Surveyor Registration No. S685  
(County Surveyor, Registered Land Surveyor, or other duly authorized official)

Office of Register of Deeds, County of \_\_\_\_\_, I hereby certify that the within instrument was filed in this office for record on the \_\_\_\_\_ day of \_\_\_\_\_, 19\_\_\_\_ at \_\_\_\_\_ o'clock \_\_\_\_\_ M.

.....  
(Register of Deeds)

By \_\_\_\_\_ Deputy

FORM 965 H. C. MILLER CO., MILWAUKEE