

CERTIFIED LAND CORNER RESTORATION

Index No. N-21

State of Wisconsin }
 County of Lan glade } ss.

History of original corner establishment:

I, Raymond J. Hallisy, do hereby certify that on the 1st day of May, 1982, I found evidence of the Section corner of 14, 13, 23, & 24 Township 32, North, Range 12E, Fourth Principal Meridian, as described hereon; and that from this evidence I established a new monument and accessories as described hereon to perpetuate the original location of this corner.

Corner set in the 1930 resurvey.

Description of corner evidence found:

4" iron pipe with brass cap. Rock mound

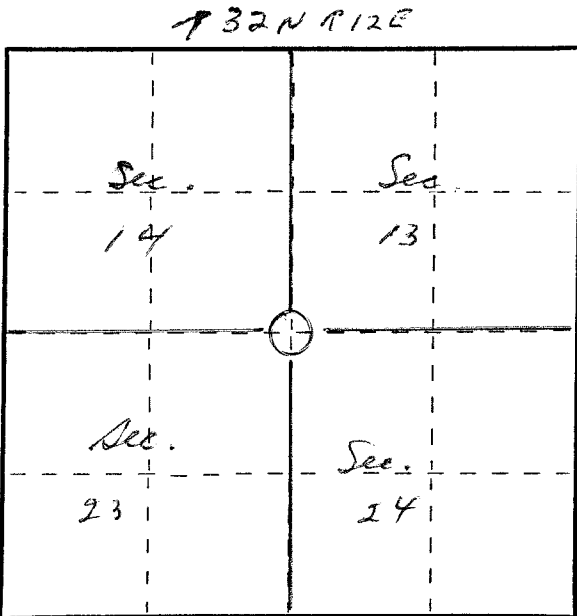
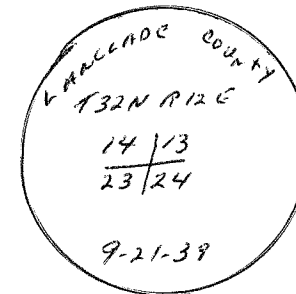
Resident witnesses:

.....

Description of monument and accessories I established to perpetuate the original location of this corner.

New BT's

4"	Hard Maple	S2E	13.9'
12"	Basswood	S38E	13'
8"	Hard Maple	N50E	16.5'
12"	Basswood	N44W	7.8'



○ = Corner monument restored.

Dated at Antigo, Wis., this 1st day of May, 1982

Signature Raymond J. Hallisy Title Land Surveyor Registration No. S-685
 (County Surveyor, Registered Land Surveyor, or other duly authorized official)

Office of Register of Deeds, County of _____, I hereby certify that the within instrument was filed in this office for record on the _____ day of _____, 19____ at _____ o'clock _____ M.

.....
 (Register of Deeds)

By _____ Deputy

FORM 985 R. C. MILLER CO., MILWAUKEE