

# LANGLADE COUNTY U.S. PUBLIC LAND CORNER RESTORATION

The South 1/4 corner of Section 13, T. 32 N., R. 12 E., Langlade County, WI.

**Corner was: (check all that apply)**

- Restored through acceptance of an obliterated evidence location.
- Restored through acceptance of a found perpetuated location.
- Determined to be lost and re-established through proportionate methods.
- Show bearings and distances to PLSS corners used for proportioning, and show original distances).
- Restored/recovered/re-established in a location that differs from a previously established position.
- (Show difference in plan view below).

43212130020

**Describe record evidence, recovered physical evidence, occupational evidence, testimonial evidence and all other evidence considered in the recovery/restoration of the corner.**

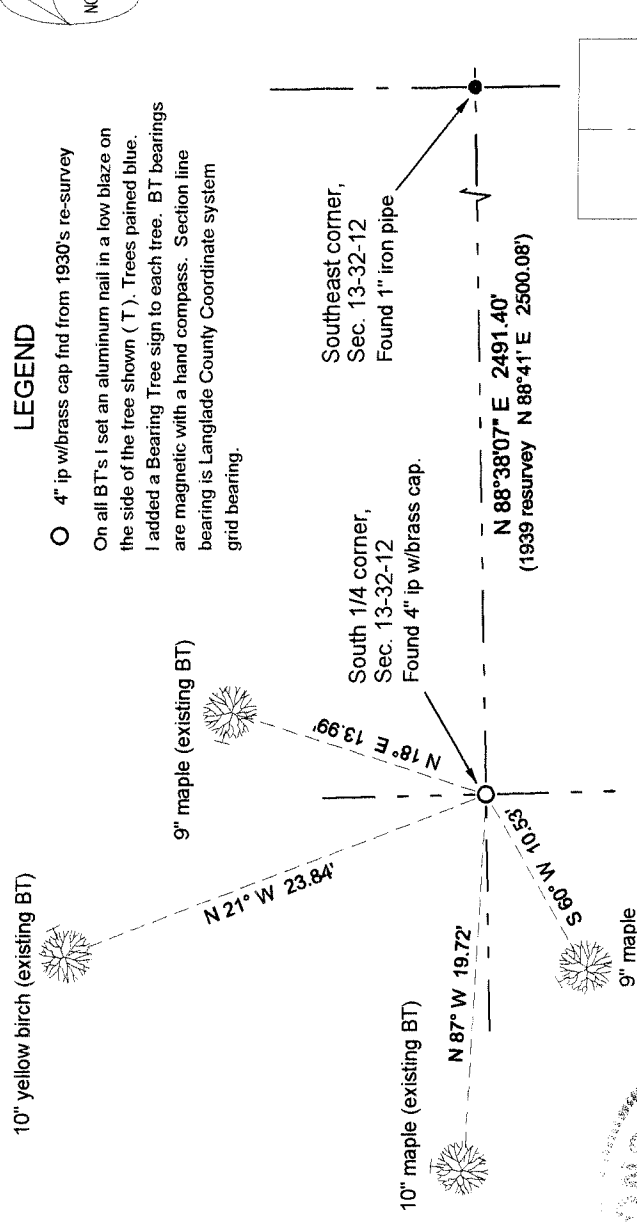
The original corner was established in 1857 by James McBride. Original bearing trees: birch, 24", S23°W, 8 links and an elm, 18", N45°W, 9 links. In the 1939 resurvey of a portion of this township, Hintz said: "to orig. cor. Fnd orig. birch, 24", S23°W, 8 links. New maple, 12", N45°W, 56.5 links". In 1987 Kelly found the 1939 monument, 1 original BT stump, 1 existing BT and rescribed it, and then scribed 3 new BT's. On 11/14/07 I found the 1939 monument in good condition. No evidence of any original BT's remain. Kellys bearing trees are all here. I accept the monument found as the best evidence of the original corner location. I re-marked and measured Kellys BT's and added a new one as described below.

**Physical description of the monument set:**

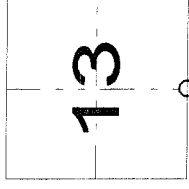
I left the existing monument in place. Set a white vinyl sign post, N35°W, 1.1' from the monument. The corner is on a sidehill, 50± west to the top, 65± east to the bottom.

**Describe the accessories used to perpetuate the corner. Include a plan view drawing and accessories found/set. Describe measuring point on bearing trees. Show any topographic features that would aid in future recovery of the corner.**

FB21-35

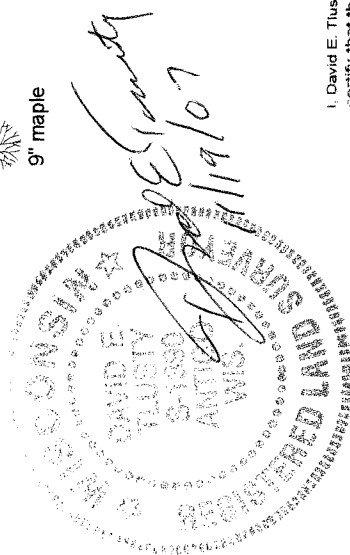


Index No.           N23 32-12          



○ = corner perpetuated

The South 1/4 corner of Section 13, T. 32 N., R. 12 E., Langlade County, WI



I, David E. Tusty, Registered Land Surveyor, as Langlade County Surveyor, certify that the corner location on this record was determined by me and that this U.S. Public Land Survey Monument Record is correct to the best of my knowledge and belief.