

CERTIFIED LAND CORNER RESTORATION

Index No. N-25

State of Wisconsin }
 County of LANGLADE } ss.

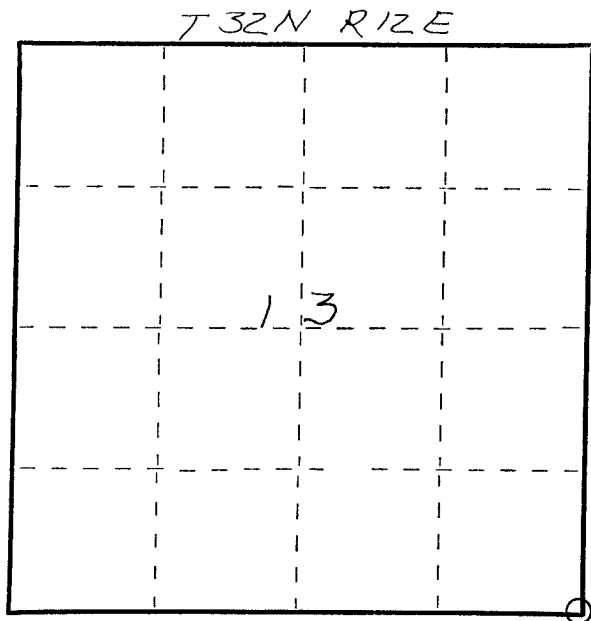
History of original corner establishment:

I WILLIAM F. Kelly, do hereby certify that on the 15th day of September, 1978, I found evidence of the SOUTH-EAST corner of 13 Township 32, North, Range 12E, Fourth Principal Meridian, as described hereon; and that from this evidence I established a new monument and accessories as described hereon to perpetuate the original location of this corner.

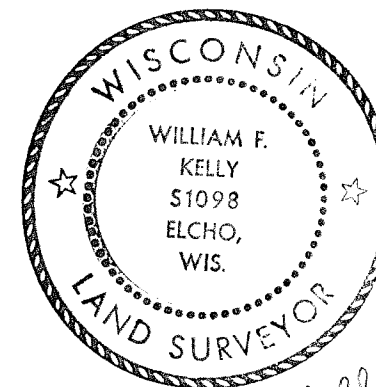
Resident witnesses:

John Cunningham

FORM 985 R. C. MILLER CO., MILWAUKEE



○ = Corner monument restored.

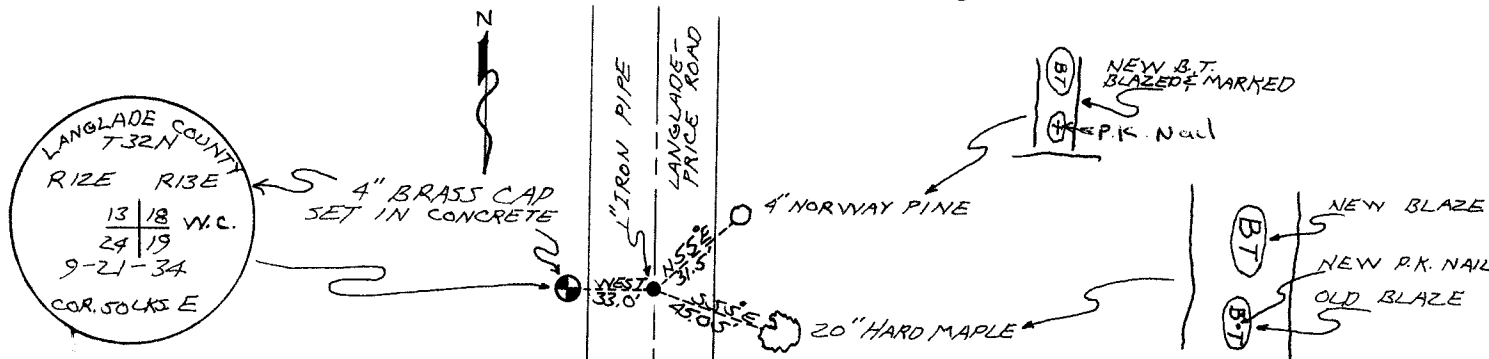


William F. Kelly

Description of corner evidence found:

LOCATED WITNESS CORNER TO SECTION CORNER.
SET 1" I.P. IN ROAD AND MARKED NEW BEARING TREES.

Description of monument and accessories I established to perpetuate the original location of this corner.



Dated at ELCHO, Wis., this 9th day of OCTOBER, 1978.

Signature William F. Kelly Title COUNTY SURVEYOR Registration No. S-1098
 (County Surveyor, Registered Land Surveyor, or other duly authorized official)

Office of Register of Deeds, County of _____, I hereby certify that the within instrument was filed in this office for record on the _____ day of _____, 19____ at _____ o'clock _____ M.

(Register of Deeds)

By _____ Deputy