

CERTIFIED LAND CORNER RESTORATION

Index No. J-17

State of Wisconsin }
County of Langlade } ss.

History of original corner establishment:

Corner set in the 1930 resurvey.

I Raymond J. Hallisy, do hereby certify that on the 29th day of April, 1978, I found evidence of the Section corner of 10, 11, 14, & 15 Township 32, North, Range 12E, Fourth Principal Meridian, as described hereon; and that from this evidence I established a new monument and accessories as described hereon to perpetuate the original location of this corner.

Description of corner evidence found:

4" iron pipe with brass cap, rock mound.

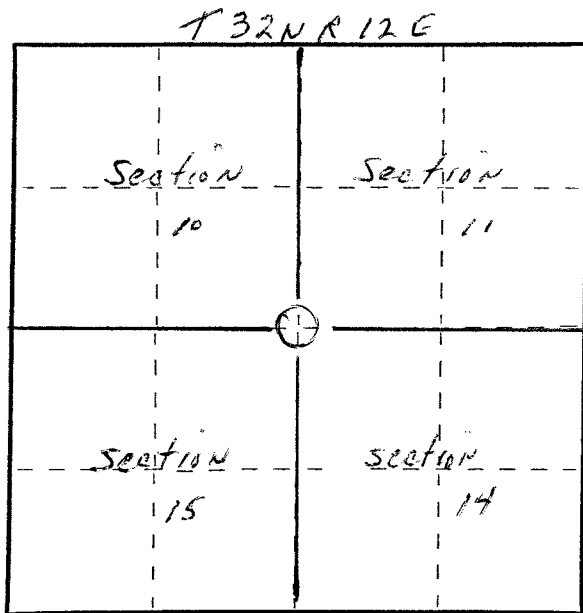
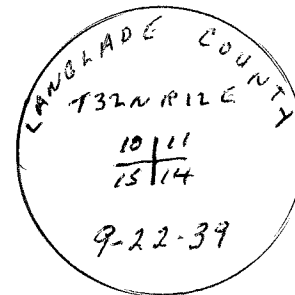
Resident witnesses:

.....
.....
.....

Description of monument and accessories I established to perpetuate the original location of this corner.

New BT's

6" Hard Maple NW 8' 9"
5" Hard Maple S65E 12' 8"
9" Hard Maple S35E 16' 9"



○ = Corner monument restored.

Dated at Antiro, Wis., this 29th day of April, 1978

Signature Raymond J. Hallisy Title Reg. Land Surveyor Registration No. S685
(County Surveyor, Registered Land Surveyor, or other duly authorized official)

Office of Register of Deeds, County of _____, I hereby certify that the within instrument was filed in this office for record on the _____ day of _____, 19____ at _____ o'clock _____ M.

.....
(Register of Deeds)

By _____ Deputy

FORM 985 H. C. MILLER CO., MILWAUKEE