

CERTIFIED LAND CORNER RESTORATION

32-12

Index No. E-13

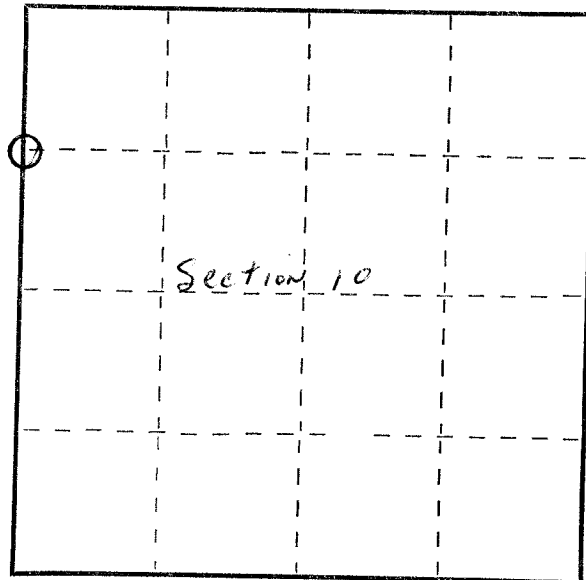
State of Wisconsin }
County of Langlade } ss.

I Raymond J. Hallisy do hereby
certify that on the 3rd day
of May, 19 70, I found
evidence of the N 1/16
corner of Section 10
Township 32, North, Range
12E, Fourth, Principal Meridian,
as described hereon; and that from this evidence
I established a new monument and accessories
as described hereon to perpetuate the original
location of this corner.

Resident witnesses:

J. Weiss
J. Kraska

FORM 985 H. C. MILLER CO., MILWAUKEE



○ = Corner monument restored.

History of original corner establishment:

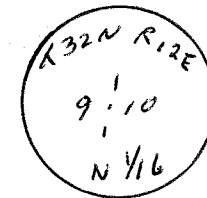
Corner set in the 1930 resurvey

Description of corner evidence found:

Found old stake standing, marked 9 10 N 1/16

Description of monument and accessories I established to perpetuate the original location of this corner.

Set 2" pipe with brass cap, rock mound.
New B.T.'s
Hard maple 12" S8W 19Ft. 8 inches
Elm 10" N56E 2 Ft. 1 inch
B.T.'s faced at base of tree and scribed BT.



Dated at Antigo, Wis., this 3rd day of May, 19 70

Signature Raymond J. Hallisy Title Reg. Land Surveyor Registration No. S-685
(County Surveyor, Registered Land Surveyor, or other duly authorized official)

Office of Register of Deeds, County of _____, I hereby certify that the within
instrument was filed in this office for record on the _____ day of _____, 19 _____
at _____ o'clock _____ M.

(Register of Deeds)

By _____ Deputy