

CERTIFIED LAND CORNER RESTORATION

32-12

Index No. H-13

State of Wisconsin }  
County of Langlade } ss.

I, Raymond J. Hallsy, do hereby certify that on the 4th day of May, 1969, I found evidence of the S. 1/16 corner of 10 Township 32, North, Range 12E, Fourth, Principal Meridian, as described hereon; and that from this evidence I established a new monument and accessories as described hereon to perpetuate the original location of this corner.

History of original corner establishment:

Corner established ~~XXX~~ in the 1930 resurvey.

Description of corner evidence found:

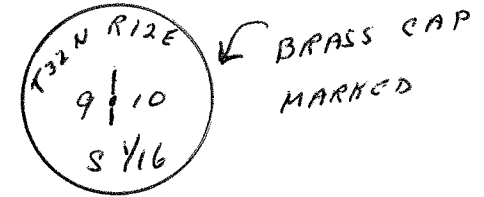
Found old squared stake standing with rock mound.

Resident witnesses:

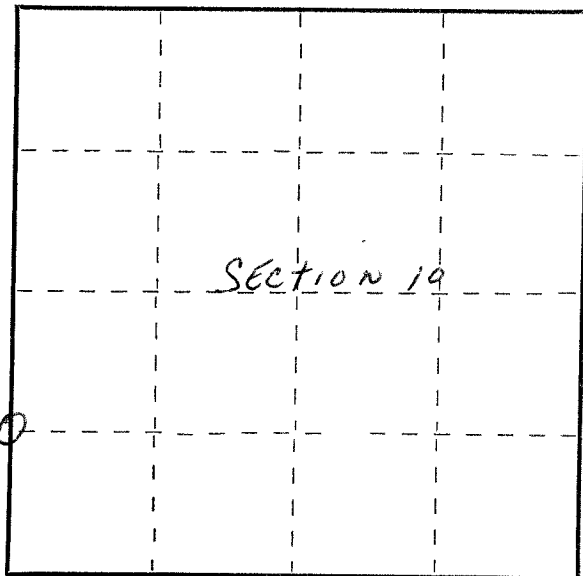
.....  
.....  
.....

Description of monument and accessories I established to perpetuate the original location of this corner.

Set 2" pipe with brass cap and rock mound.  
B.T.'s to corner  
Hard maple 7" N30W 9Ft. 6 inches  
Hard maple 6" N53E 11 Ft. 1 inch  
B.T.'s faced at base of tree and scribed BT



FORM 985 H. C. MILLER CO., MILWAUKEE



○ = Corner monument restored.

Dated at June Antigo, Wis., this 5 day of JUNE, 1969.

Signature Raymond J. Hallsy Title Reg. Land Surveyor Registration No. S-685  
(County Surveyor, Registered Land Surveyor, or other duly authorized official)

Office of Register of Deeds, County of....., I hereby certify that the within instrument was filed in this office for record on the..... day of....., 19..... at..... o'clock..... M.

.....  
(Register of Deeds)

By..... Deputy