

CERTIFIED LAND CORNER RESTORATION

32-12
Index No. J-9

State of Wisconsin }
County of Langlade } ss.

History of original corner establishment:

Corner set in the 1930 resurvey

I Raymond J. Hallisy, do hereby certify that on the 11th day of May, 1969, I found evidence of the Section corner of 8, 9, 17, & 16 Township 32, North, Range 12E, Fourth, Principal Meridian, as described hereon; and that from this evidence I established a new monument and accessories as described hereon to perpetuate the original location of this corner.

Description of corner evidence found:

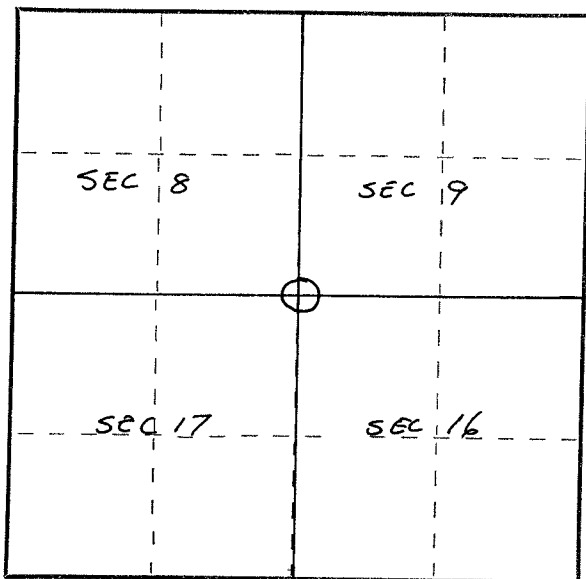
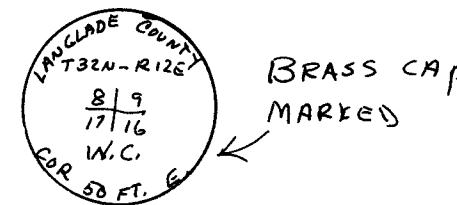
Found picket set by Langlade Co. Forestry Crew when the road was relocated.
Checked line fence corner to east with survey notes

Resident witnesses:

.....
.....
.....

Description of monument and accessories I established to perpetuate the original location of this corner.

Set 4" brass cap in cement as witness corner 50 feet to the west.
B.T.'s to witness corner
Aspen 10" N43W 23Ft. 6 inches
Aspen 9" S74W 26Ft. 7 inches
B.T.'s faced at base of tree and scribed BT



○ = Corner monument restored.

Dated at Antigo, Wis., this 11th day of May, 1969

Signature Raymond J. Hallisy Title Reg. Land Surveyor Registration No. S-685
(County Surveyor, Registered Land Surveyor, or other duly authorized official)

Office of Register of Deeds, County of _____, I hereby certify that the within instrument was filed in this office for record on the _____ day of _____, 19____ at _____ o'clock _____ M.

(Register of Deeds)

By _____ Deputy

FORM 985 H. C. MILLER CO., MILWAUKEE