

CERTIFIED LAND CORNER RESTORATION

32-17

Index No. H-5

State of Wisconsin }
County of Langlade } ss.

History of original corner establishment:

~~XXXXXXXXXXXXXXXXXXXX~~

Corner set in the 1930's by: E. F. Kowalke
C. W. Borth

I, Raymond J. Hallisy, do hereby certify that on the 22nd day of June, 1968, I found evidence of the S 1/16 corner of Section 7 Township 32, North, Range 12, Fourth, Principal Meridian, as described hereon; and that from this evidence I established a new monument and accessories as described hereon to perpetuate the original location of this corner.

Description of corner evidence found:

Found squared stake down. Could not read marks. Field notes say that post was set as a witness corner ~~50~~ lks. west.
50

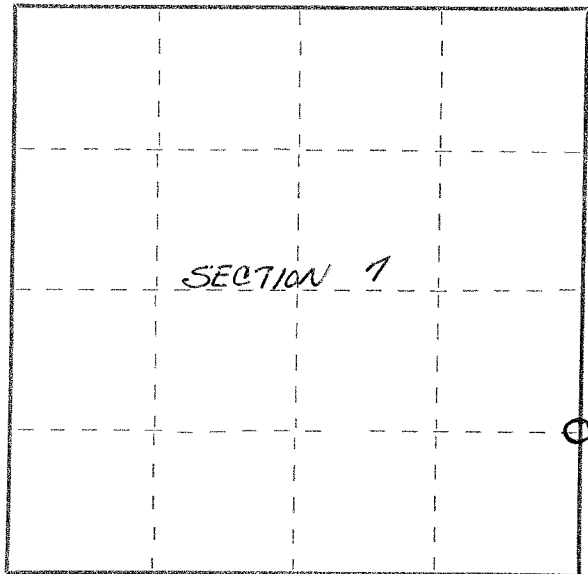
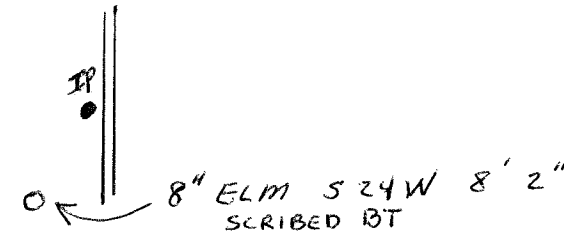
Resident witnesses:

.....
.....
.....

Description of monument and accessories I established to perpetuate the original location of this corner.

Set std. 1 1/2" pipe with cap marked W.C. C.30 LKS. E. S 1/16
BT, S ARE TO W.C.

12" ELM S 68 W 14' 7"
SCRIBED BT → ○



○ = Corner monument restored.

Dated at Antigo, Wis., this 22nd day of June, 1968.

Signature Raymond J. Hallisy Title Land Surveyor Registration No. S-685
(County Surveyor, Registered Land Surveyor, or other duly authorized official)

Office of Register of Deeds, County of _____, I hereby certify that the within instrument was filed in this office for record on the _____ day of _____, 19____ at _____ o'clock _____ M.

.....
(Register of Deeds)
By.....Deputy

FORM 985 H. C. MILLER CO., MILWAUKEE