

CERTIFIED LAND CORNER RESTORATION

Index No. J-3  
32-12

State of Wisconsin }  
County of Langlade } ss.

I Raymond J. Hallisy, do hereby certify that on the 2nd day of December, 1977, I found evidence of the 1/4 corner of 7 & 18 Township 32, North, Range 12E, Fourth Principal Meridian, as described hereon; and that from this evidence I established a new monument and accessories as described hereon to perpetuate the original location of this corner.

Resident witnesses:

.....  
.....  
.....

History of original corner establishment:

Corner set in the 1930 resurvey

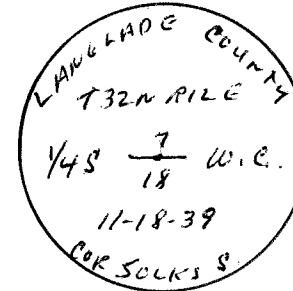
Description of corner evidence found:

4" iron pipe with brass cap north of town road  
Fence north and east.

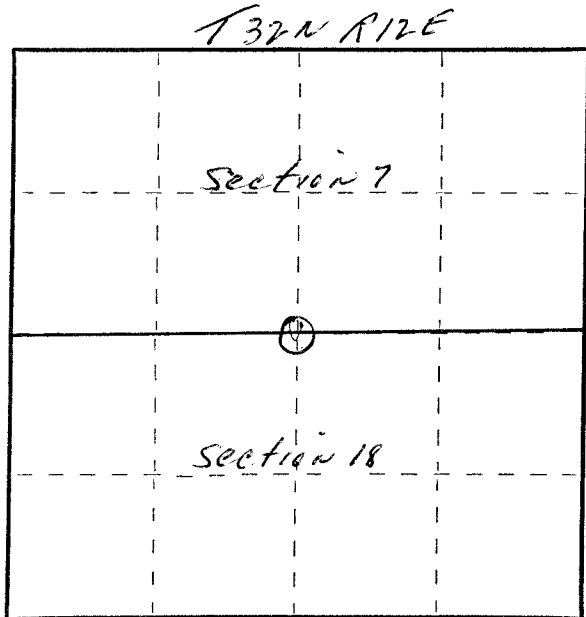
Description of monument and accessories I established to perpetuate the original location of this corner.

New BT's to witness corner

12" Hard Maple S9E 63'  
10" Cherry S1/4E 68' 2"  
4" Iron Gate post SW 52' 1"



FORM 985 R. C. MILLER CO., MILWAUKEE



○ = Corner monument restored.

Dated at Antigo, Wis., this 2nd day of December, 1977

Signature Raymond J. Hallisy Title XXXXX Land Surveyor Registration No. S685  
(County Surveyor, Registered Land Surveyor, or other duly authorized official)

Office of Register of Deeds, County of....., I hereby certify that the within instrument was filed in this office for record on the..... day of....., 19..... at..... o'clock..... M.

.....  
(Register of Deeds)  
By..... Deputy