

LANGLADE COUNTY U.S. PUBLIC LAND CORNER RESTORATION

The Southeast corner of Section 7, T. 32 N., R. 12 E., Langlade County, WI.

Corner was: (check all that apply)

- Restored through acceptance of an obliterated evidence location.
- Restored through acceptance of a found perpetuated location.
- Determined to be lost and re-established through proportionate methods.
- Show bearings and distances to PLS corners used for proportioning, and show original distances).
- Restored/recovered/re-established in a location that differs from a previously established position.
- Check here if additional information is shown on the reverse side of this form.

4 321207 0000

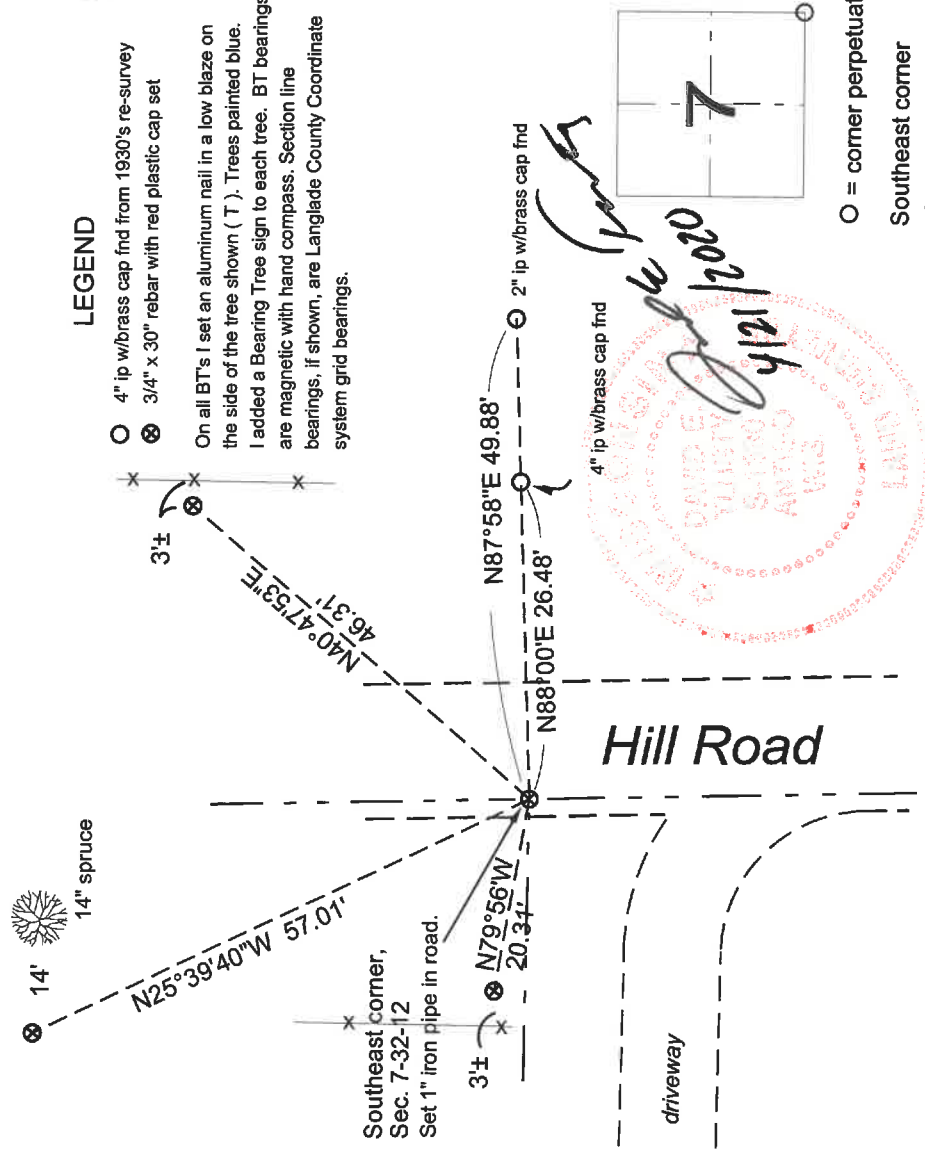
Describe record evidence, recovered physical evidence, occupational evidence, testimonial evidence and all other evidence considered in the recovery/restoration of the corner.

The original corner was established in 1857 by J. McBride. Original bearing trees: sugar, 6", N36W, 7 links; sugar, 7", N66E, 23 links; fir, 10", S54E, 72 links and a sugar, 6", S10W, 25 links. In the 1930's resurvey of part of this township, Darwin Hintz found bluish boulder with very pointed top and cross on it. Set W.C. 40 links East. In 1974, Kelly found wit. cor to sec cor lying on its side, possibly bent by road mach. Excavated and found old buggy axle by Hutchinson. Set W.C. in original hole and set another W.C. 2" iron pipe with brass cap 50 feet east of corner. 05/07/2014 D. Tlusty found 3/8" iron rod, about 6" long, 4" below road surface. Measures approx. 50 feet from WM to east. Accepted as evidence of the corner location and replaced it with a 1" x 30" iron pipe, top of which is 0.8' below road surface. The corner falls about 7 feet west of center of gravel road. 4/17/2020 D. Tlusty set ties shown below.

Physical description of the monument set:

I set a 1" x 30" iron pipe in the road.
Set a white vinyl sign post, 1' west of 4" WC monument.

Describe the accessories used to perpetuate the corner. Include a plan view drawing and accessories found/set. Describe measuring point on bearing trees. Show any topographic features that would aid in future recovery of the corner.



FB 21-104

Index No. J 5 32-12



○ = corner perpetuated
Southeast corner of Section 7, T. 32 N., R. 12 E., Langlade County, WI

I, David E. Tlusty, Registered Land Surveyor, as Langlade County Surveyor, certify that the corner location on this record was determined by me and that this U.S. Public Land Survey Monument Record is correct to the best of my knowledge and belief.

CERTIFIED LAND CORNER RESTORATION

32-12

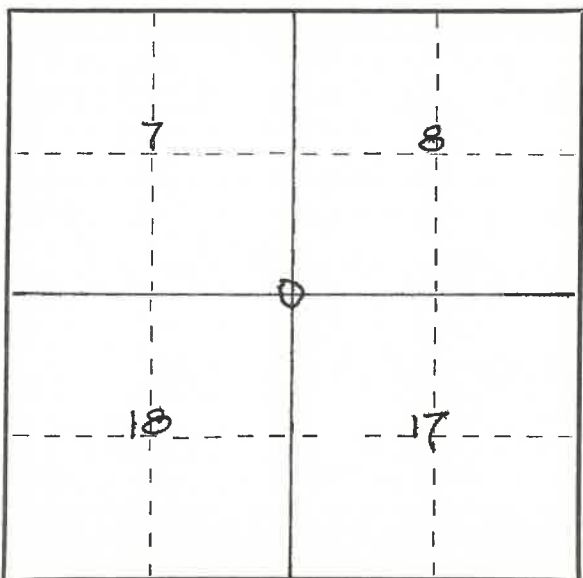
Index No. J-5

State of Wisconsin }
 County of LANGLADE } ss.

I WM F. KELLY, do hereby certify that on the 11TH day of JULY, 1974, I found evidence of the SECTION corner of SECS. 7-8-18-17 Township 32, North, Range 12 EAST, Fourth Principal Meridian, as described hereon; and that from this evidence I established a new monument and accessories as described hereon to perpetuate the original location of this corner.

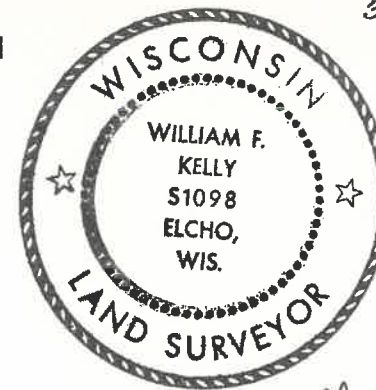
Resident witnesses:

.....



○ = Corner monument restored.

History of original corner establishment:

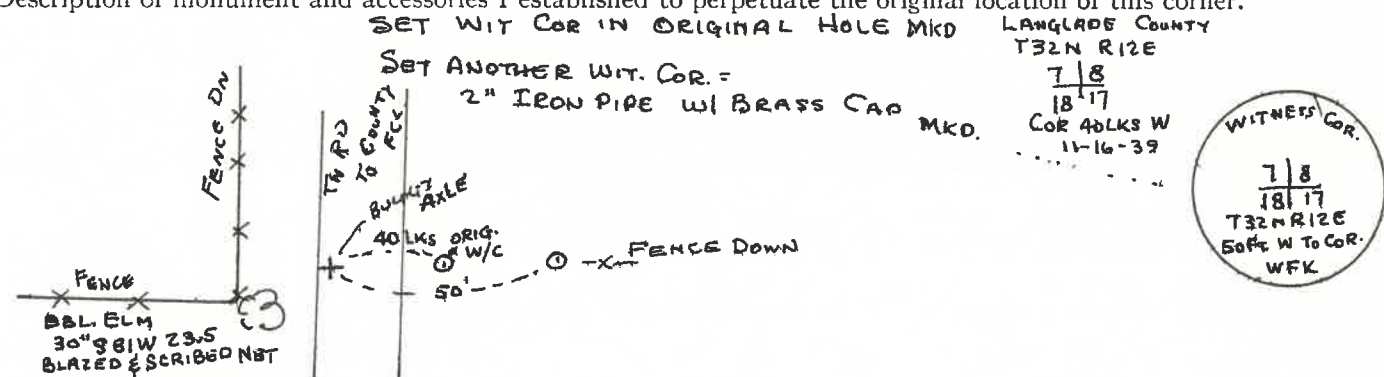


William F. Kelly 11 July 1974

Description of corner evidence found:

FOUND WIT. COR. TO SEC. COR LYING ON ITS SIDE - PROBABLY BENT BY EXCAVATED & FOUND OLD BUGGY AXLE BY HUTCHINSON 40LKS E. of SEC. COR ROAD MACH.

Description of monument and accessories I established to perpetuate the original location of this corner.



Dated at ELCHO, Wis., this 11TH day of JULY, 1974.

Signature William F. Kelly Title REG. LAND SURVEYOR Registration No. S-1098
 (County Surveyor, Registered Land Surveyor, or other duly authorized official)

Office of Register of Deeds, County of _____, I hereby certify that the within instrument was filed in this office for record on the _____ day of _____, 19____ at _____ o'clock _____ M.

(Register of Deeds)

By _____ Deputy

FORM 985 H. C. MILLER CO., MILWAUKEE