

CERTIFIED LAND CORNER RESTORATION

32-12

Index No. E-2

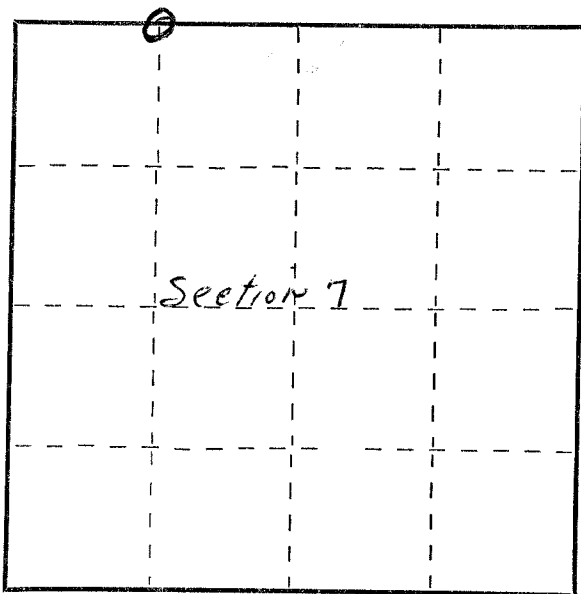
State of Wisconsin }
County of Langlade } ss.

I, Raymond J. Hallisy do hereby
certify that on the 25th day
of April, 1970, I found
evidence of the W1/16
corner of Section 7
Township 32, North, Range
12E, Fourth, Principal Meridian,
as described hereon; and that from this evidence
I established a new monument and accessories
as described hereon to perpetuate the original
location of this corner.

Resident witnesses:

J. Weir
J. Kryka

FORM 985 H. C. MILLER CO., MILWAUKEE



○ = Corner monument restored.

History of original corner establishment:

Corner set in the 1930 resurvey.

Description of corner evidence found:

Found old stake standing, marked S6 S7 W1/16

Description of monument and accessories I established to perpetuate the original location of this corner.

Set 2" pipe with brass cap
New B.T.'s

Elm 8" S73E 27.6Ft.
Elm 10" NSW 11.2Ft.

B.T.'s faced at base of tree and scribed BT.



Dated at Antigo, Wis., this 25th day of April, 1970

Signature Raymond J. Hallisy Title Reg. Land Surveyor Registration No. S-685
(County Surveyor, Registered Land Surveyor, or other duly authorized official)

Office of Register of Deeds, County of _____, I hereby certify that the within
instrument was filed in this office for record on the _____ day of _____, 19____
at _____ o'clock _____ M.

(Register of Deeds)

By _____ Deputy