

CERTIFIED LAND CORNER RESTORATION

Index No. C-13

State of Wisconsin }
County of Lan glade } ss.

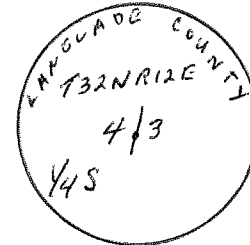
History of original corner establishment:

I Raymond J. Hallisy, do hereby certify that on the 13th day of November, 19 82, I found evidence of the 1/4 corner of Section 3 & 4 Township 32, North, Range 12E, Fourth Principal Meridian, as described hereon; and that from this evidence I established a new monument and accessories as described hereon to perpetuate the original location of this corner.

Corner Set in the 1930 resurvey.

Description of corner evidence found:

4" pipe with brass cap, rock mound.

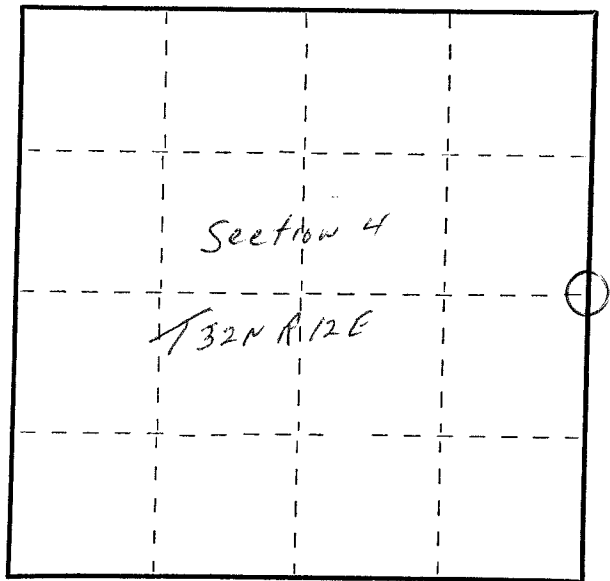


Resident witnesses:
.....
.....
.....

Description of monument and accessories I established to perpetuate the original location of this corner.

New BT's

12"	Hard Maple	N26W	17.1'
6"	Basswood	N52E	10'
7"	Hard Maple	S42W	21.7'
7"	Hard Maple	S10W	26.9'



○ = Corner monument restored.

Dated at Antigo, Wis., this 13th day of November, 19 82

Signature Raymond J. Hallisy Title Land Surveyor Registration No. S-685
(County Surveyor, Registered Land Surveyor, or other duly authorized official)

Office of Register of Deeds, County of _____, I hereby certify that the within instrument was filed in this office for record on the _____ day of _____, 19 _____ at _____ o'clock _____ M.

.....
(Register of Deeds)

By _____ Deputy

FORM 985 K. C. MILLER CO., MILWAUKEE