

CERTIFIED LAND CORNER RESTORATION

Index No. E-13

State of Wisconsin }
County of Lanplade } ss.

I Raymond J. Hallisy, do hereby certify that on the 6th day of November, 19 82, I found evidence of the Section corner of 3, 4, 9, & 10 Township 32, North, Range 12E, Fourth Principal Meridian, as described hereon; and that from this evidence I established a new monument and accessories as described hereon to perpetuate the original location of this corner.

Resident witnesses:

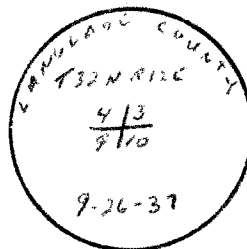
.....
.....
.....

History of original corner establishment:

Corner set in the 1930 resurvey.

Description of corner evidence found:

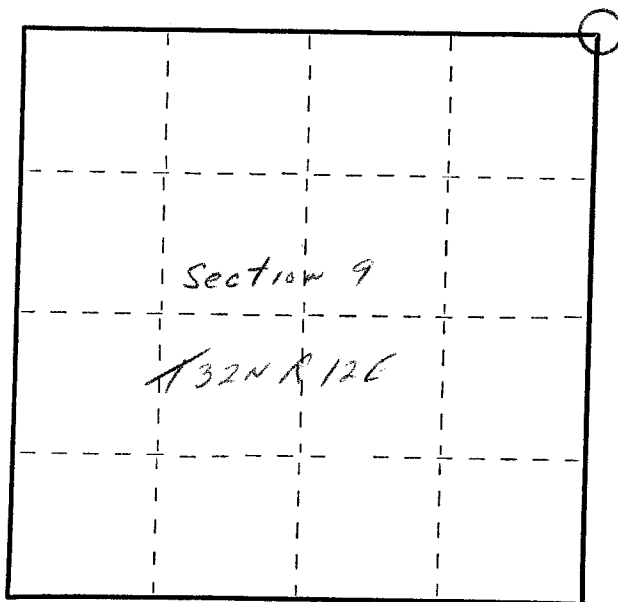
4" pipe with brass cap, rock m und.



Description of monument and accessories I established to perpetuate the original location of this corner.

New BT's

12"	Hard Maple	S27W	14'
14"	Hard Maple	N50W	4.8'
12"	Hard Maple	N45E	18.8'
16"	Basswood	S61E	22.4'



○ = Corner monument restored.

Dated at Antigo, Wis., this 6th day of November, 19 82

Signature Raymond J. Hallisy Title Land Surveyor Registration No. 5-685
(County Surveyor, Registered Land Surveyor, or other duly authorized official)

Office of Register of Deeds, County of....., I hereby certify that the within instrument was filed in this office for record on the..... day of....., 19..... at..... o'clock..... M.

(Register of Deeds)

By..... Deputy