

CERTIFIED LAND CORNER RESTORATION

32-12

Index No. E-14

State of Wisconsin }
County of Langlade } ss.

History of original corner establishment:

Corner set in the 1930 resurvey

I, Raymond J. Hallisy, do hereby certify that on the 9th day of May, 1970, I found evidence of the W 1/16 corner of Section 10 Township 32, North, Range 12E, Fourth, Principal Meridian, as described hereon; and that from this evidence I established a new monument and accessories as described hereon to perpetuate the original location of this corner.

Description of corner evidence found:

Found old stake standing, marked W 1/16 3 10 Rock mound

Resident witnesses:

J. Weix
J. Kriska

Description of monument and accessories I established to perpetuate the original location of this corner.

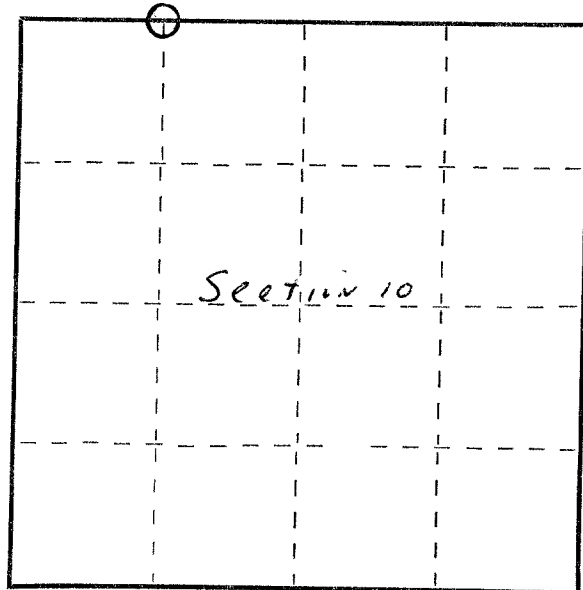
Set "2 pipe with brass cap, rock mound.

New B.T.'s

Hard maple 4" N69W 5 Ft. 2 inches

White Birch 7" S3E 6 Ft. 9 inches

B.T.'s faced at base of tree and scribed BT.



○ = Corner monument restored.

Dated at Antigo, Wis., this 9th day of May, 1970

Signature Raymond J. Hallisy Title Reg. Land surveyor Registration No. S-685
(County Surveyor, Registered Land Surveyor, or other duly authorized official)

Office of Register of Deeds, County of _____, I hereby certify that the within instrument was filed in this office for record on the _____ day of _____, 19____ at _____ o'clock _____ M.

(Register of Deeds)

By _____ Deputy