

LANGLADE COUNTY U.S. PUBLIC LAND CORNER RESTORATION

The South 1/4 corner of Section 3, T. 32 N., R. 12 E., Langlade County, WI.

Corner was: (check all that apply)

- Restored through acceptance of an obliterated evidence location.
- Restored through acceptance of a found perpetuated location.
- Determined to be lost and re-established through proportionate methods.
- Show bearings and distances to PLSS corners used for proportioning, and show original distances).
- Restored/recovered/re-established in a location that differs from a previously established position.
- (Show difference in plan view below).
- Check here if additional information is shown on the reverse side of this form.

4 3212 03 0020

Describe record evidence, recovered physical evidence, occupational evidence, testimonial evidence and all other evidence considered in the recovery/restoration of the corner.

The original corner was established in 1857 by James McBride. Original bearing trees: elm, 14", S26W, 23 links and a sugar, 12", N53E, 17 links. From the 1939 resurvey notes by Darwin Hintz: "set 1/4 cor. by meas.. Dorr set this cor. the same way in 1890. but we could not find his reestablished B.T. New maple 15 N 87 W 45.2 Hem. 15 S 40 W 36. Fair stand of old trees around 1/4 corner.
On 10/22/08 D. Tlusty found monument frost heaved and leaning to the west. Re-dug and re-set monument so top is now 15" above ground. Marked bearing trees as shown below.

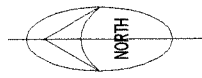
Physical description of the monument set:

I re-planted the existing monument. Set a white vinyl sign post, S70°W, 0.6' from the monument.

Describe the accessories used to perpetuate the corner. Include a plan view drawing and accessories found/set. Describe measuring point on bearing trees. Show any topographic features that would aid in future recovery of the corner.

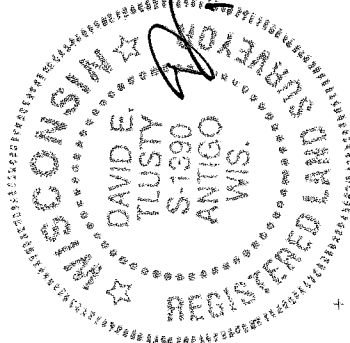
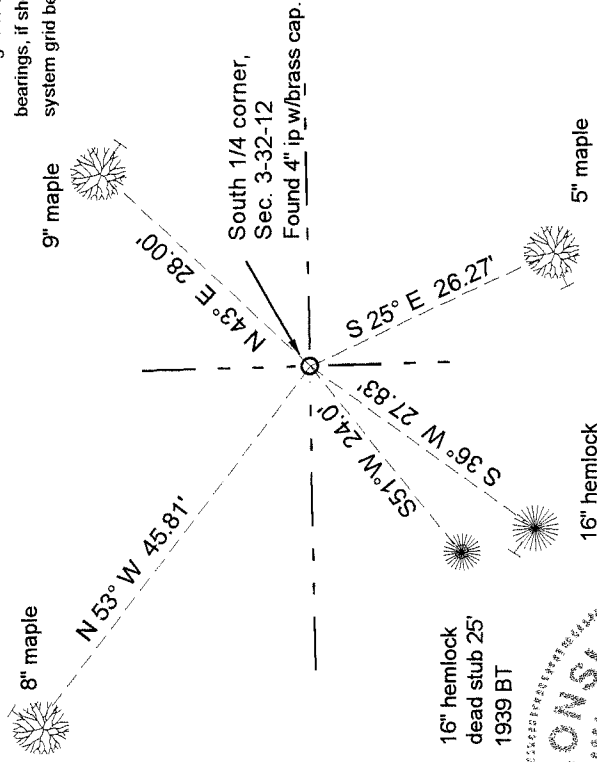
PLAN VIEW DRAWING

FB21-48



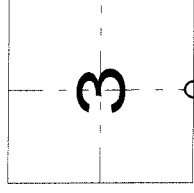
LEGEND

- 4" ip w/brass cap fnd from 1930's re-survey
- On all BT's I set an aluminum nail in a low blaze on the side of the tree shown (T). Trees painted blue.
- I added a Bearing Tree sign to each tree. BT bearings are magnetic with a hand compass. Section line bearings, if shown, are Langlade County Coordinate system grid bearings.



I, David E. Tlusty, Registered Land Surveyor, as Langlade County Surveyor, certify that the corner location on this record was determined by me and that this U.S. Public Land Survey Monument Record is correct to the best of my knowledge and belief.

Index No. E 15 32-12



= corner perpetuated
The South 1/4 corner of Section 3, T. 32 N., R. 12 E., Langlade County, WI