

CERTIFIED LAND CORNER RESTORATION

32-12

Index No. E-16

State of Wisconsin }
County of Langlade } ss.

History of original corner establishment:

Corner set in the 1930 resurvey.

I, Raymond J. Hallisy, do hereby certify that on the 9th day of May, 1970, I found evidence of the E 1/16 corner of Section 10 Township 32, North, Range 12E, Fourth, Principal Meridian, as described hereon; and that from this evidence I established a new monument and accessories as described hereon to perpetuate the original location of this corner.

Description of corner evidence found:

Found old stake standing, marked E 1/16 3 10

Resident witnesses:

S. Weiss
S. Krupka

Description of monument and accessories I established to perpetuate the original location of this corner.

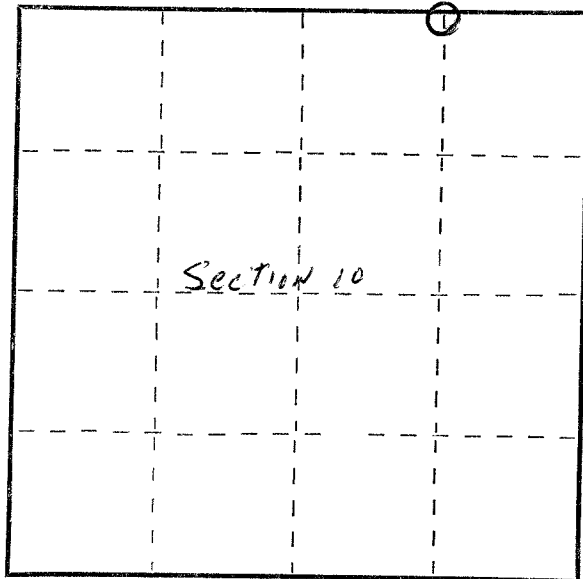
Set 2" pipe with brass cap

New B.T.'s

Cherry 8" N74W 12 Ft. 9 inches

Elm 16" S9W 1 Ft. 11 inches

B.T.'s faced at base of tree and scribed BT.



○ = Corner monument restored.

Dated at Antigo, Wis., this 9th day of May, 1970

Signature Raymond J. Hallisy Title Reg. Land Surveyor Registration No. S-685
(County Surveyor, Registered Land Surveyor, or other duly authorized official)

Office of Register of Deeds, County of _____, I hereby certify that the within instrument was filed in this office for record on the _____ day of _____, 19____ at _____ o'clock _____ M.

(Register of Deeds)

By _____ Deputy