

CERTIFIED LAND CORNER RESTORATION

Index No. X-1

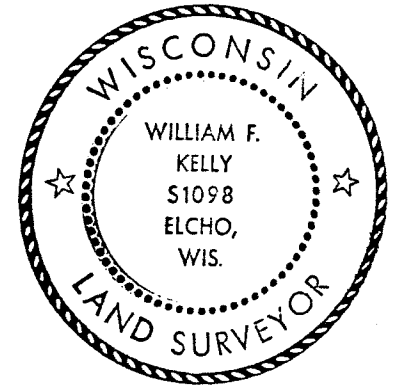
State of Wisconsin }
County of LANGLADE } ss.

I WILLIAM F. KELLY, do hereby certify that on the 16th day of AUGUST, 1982, I found evidence of the E 1/4 corner of SECTION 36 Township 32, North, Range 11 EAST, Fourth Principal Meridian, as described hereon; and that from this evidence I established a new monument and accessories as described hereon to perpetuate the original location of this corner.

Resident witnesses:
.....
.....
.....

History of original corner establishment:
ORIGINAL CORNER ESTABLISHED BY
HIRAM C. FELLOWS IN SEPT, 1860.

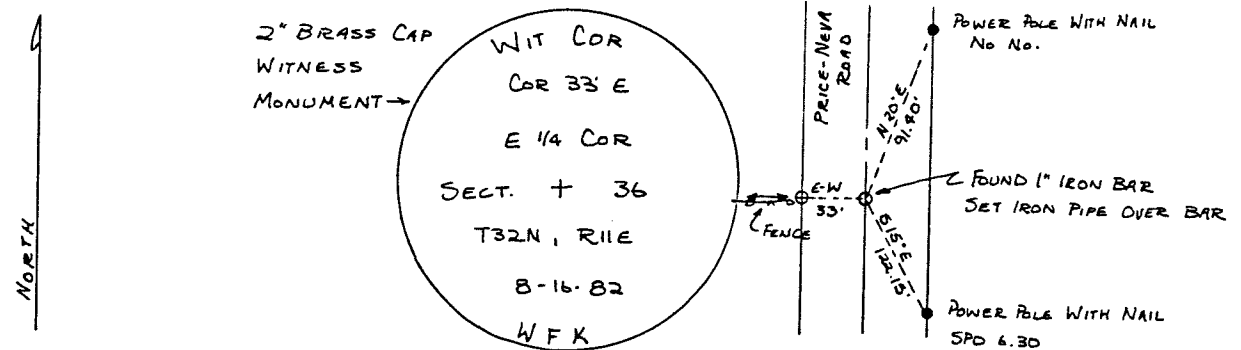
Description of corner evidence found:
FOUND A 1" IRON BAR BELOW THE ROAD SURFACE, ALSO A FENCE LINE. SET IRON PIPE OVER EXISTING IRON BAR. SET 2" x 42" BLACK IRON PIPE WITH BRASS CAP WITNESS MONUMENT.



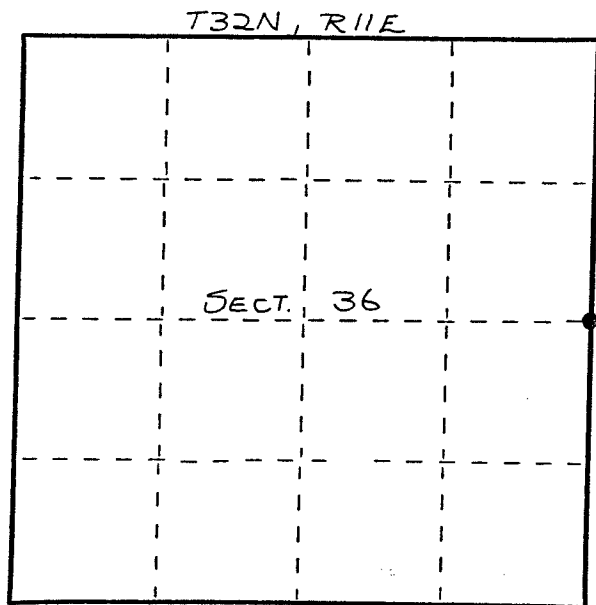
William F. Kelly

32-12

Description of monument and accessories I established to perpetuate the original location of this corner.



FORM 985 H. C. MILLER CO., MILWAUKEE



○ = Corner monument restored.

Dated at ELCHO, Wis., this 16th day of AUGUST, 1982.

Signature William F. Kelly Title COUNTY SURVEYOR Registration No. 1098
(County Surveyor, Registered Land Surveyor, or other duly authorized official)

Office of Register of Deeds, County of....., I hereby certify that the within instrument was filed in this office for record on the..... day of....., 19..... at..... o'clock..... M.

(Register of Deeds)

By..... Deputy