

# U.S. PUBLIC LAND SURVEY MONUMENT RECORD

(Prepared and as required by S. A-E 7.08 WI Administrative Code)

The SOUTH 1/4 corner of Section 36, T. 32 N., R. 11 E., Langlade County, WI  
 Corner was (check all that apply)

- Restored through acceptance of an obliterated evidence location.
- Restored through acceptance of a found perpetuated location.
- Determined to be lost and re-established through proportionate methods. (show bearings and distances to PLSS corners used for proportioning.)
- Restored/recovered/re-established in a location that differs from a previously established position. (Show difference in plan view below.)
- Check here if additional information is shown on the reverse side of this form.

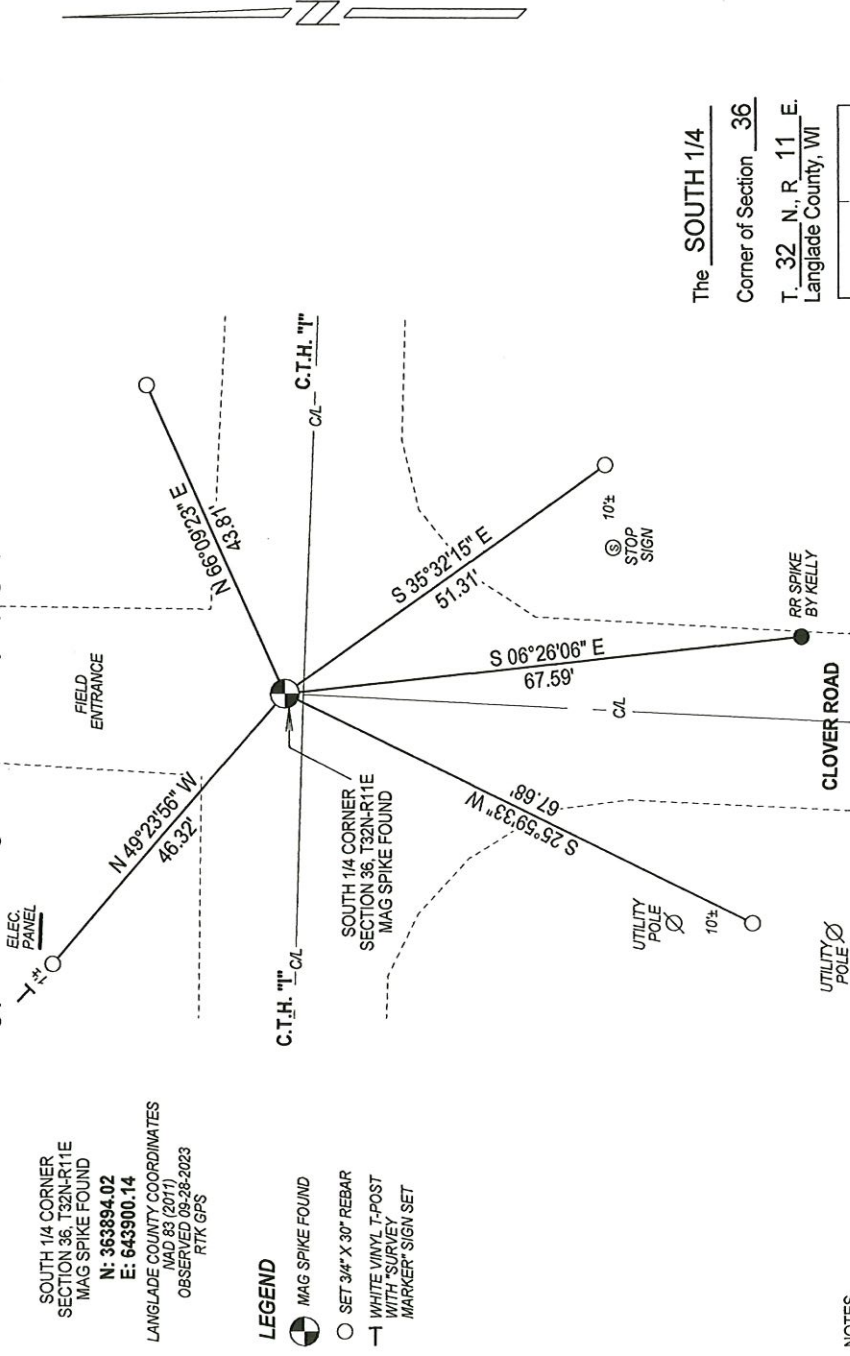
**Describe record evidence, recovered physical evidence, occupational evidence, testimonial evidence, and all other evidence considered in the recovery/restoration of the corner.**

- 1859 - Original corner established by H.C. Fellows - bearing trees: White Pine, 12", N17°W, 15 links; Birch, 18", S43°E, 12 links;
- 1982 - William Kelly "set railroad spike on straight line and at equal distances from the SE & SW corners of Section 36." Kelly set a railroad spike at the corner, made ties and filed a tie sheet.
- 2002 - David Tlusty found a nail at apparent c/ci intersection.
- 2020 - Timothy Rusch set a mag spike at corner per Certified Survey Map Volume 19 page 137.
- 2023 - I found the railroad spike set by Kelly and mag spike set by Rusch. I accept the location of corner by Rusch at the intersection of centerlines of CTH "M" and Clover Road as best evidence of the original corner location.

**Physical description of the monument set:**

Accepted mag spike set by Rusch as corner location and tied out as shown below.

Describe the accessories used to perpetuate the location of the corner. Include a plan view drawing and indicate accessories found/set. Describe measuring point on bearing trees. Show any topographic features that would aid in future recovery of the corner.



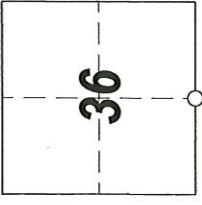
NOTES  
 - SKETCH NOT DRAWN TO SCALE  
 - TIE BEARINGS SHOWN ARE LANGLADE COUNTY GRID BEARINGS.  
 - ALL TIES MEASURED ELECTRONICALLY WITH TOTAL STATION.

I, Michael J. Hoffman certify that the corner location shown on this record was determined by me or under my direction and control and that this U.S. Public Land Survey Monument Record is correct and complete to the best of my knowledge and belief.

Michael J. Hoffman 09-28-2023  
 Signature Date



The SOUTH 1/4  
 Corner of Section 36  
 T. 32 N., R. 11 E.  
 Langlade County, WI



○ = Location of corner

CERTIFIED LAND CORNER RESTORATION

Index No. Z-23

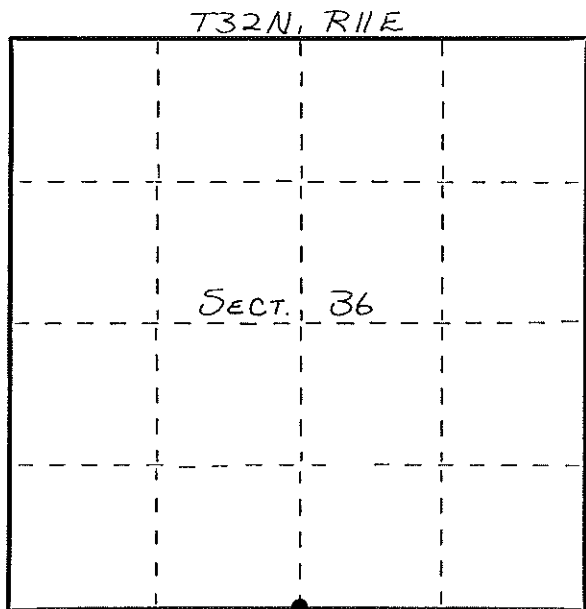
State of Wisconsin }  
County of LANGLADE } ss.

History of original corner establishment:  
ORIGINAL CORNER ESTABLISHED BY  
HIRAM C. FELLOWS IN SEPT., 1860.

I WILLIAM F. KELLY, do hereby  
certify that on the 16<sup>th</sup> day  
of AUGUST, 1982, I found  
evidence of the S 1/4  
corner of SECT. 36  
Township 32, North, Range  
11 EAST, Fourth Principal Meridian,  
as described hereon; and that from this evidence  
I established a new monument and accessories  
as described hereon to perpetuate the original  
location of this corner.

Resident witnesses:

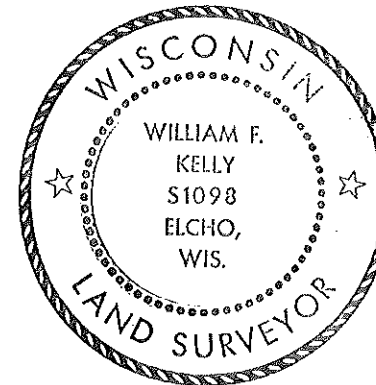
.....  
.....  
.....



○ = Corner monument restored.

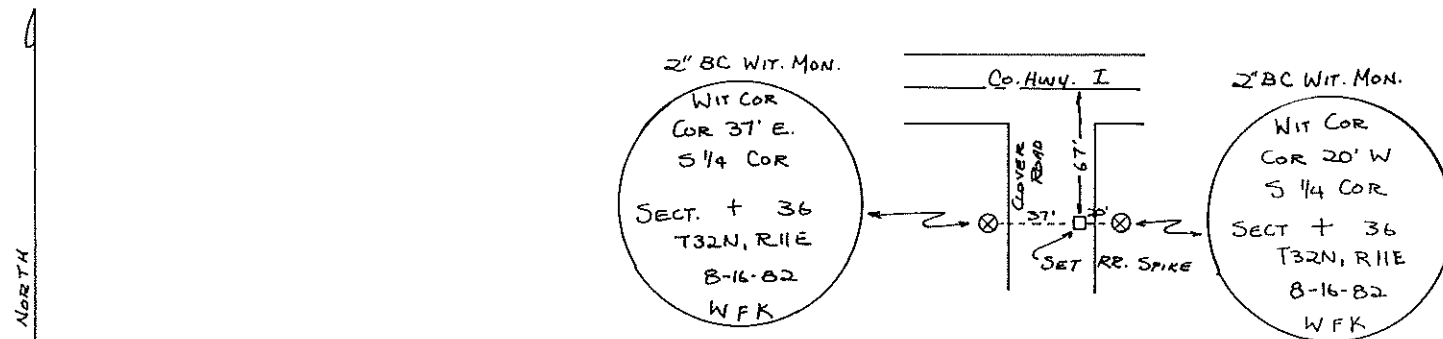
Description of corner evidence found:

SET R.R. SPIKE ON STRAIGHT LINE  
AND AT EQUAL DISTANCES FROM  
SE & SW CORNERS OF SECT. 36.  
SET 2 2" x 42" BLACK IRON PIPES  
WITH BRASS CAP WITNESS MONUMENTS.



*William F. Kelly*

Description of monument and accessories I established to perpetuate the original location of this corner.



Dated at ELCHO, Wis., this 16<sup>th</sup> day of AUGUST, 1982.

Signature William F. Kelly Title COUNTY SURVEYOR Registration No. 1098  
(County Surveyor, Registered Land Surveyor, or other duly authorized official)

Office of Register of Deeds, County of....., I hereby certify that the within  
instrument was filed in this office for record on the.....day of....., 19.....  
at.....o'clock..... M.

.....  
(Register of Deeds)

By.....Deputy