

CERTIFIED LAND CORNER RESTORATION

Index No. X-21

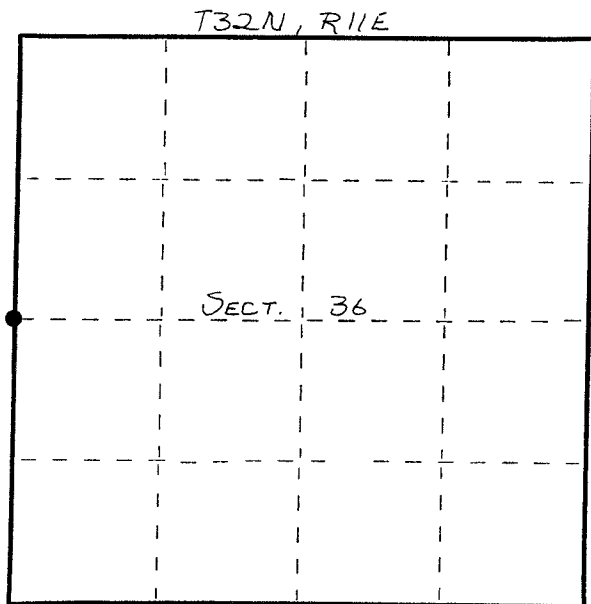
State of Wisconsin } ss.
County of LANGLADE

I, WILLIAM F. KELLY, do hereby certify that on the 16th day of AUGUST, 1982, I found evidence of the W. 1/4 corner of SECT. 36 Township 32, North, Range 11 EAST, Fourth Principal Meridian, as described hereon; and that from this evidence I established a new monument and accessories as described hereon to perpetuate the original location of this corner.

Resident witnesses:

.....
.....
.....

FORM 985 H. C. MILLER CO., MILWAUKEE



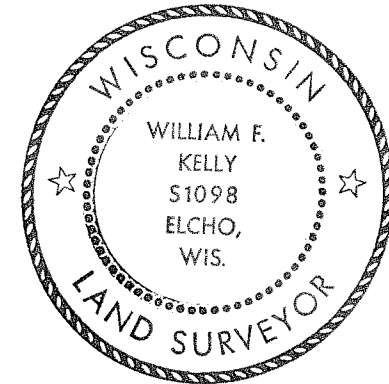
○ = Corner monument restored.

History of original corner establishment:

ORIGINAL CORNER ESTABLISHED BY
HIRAM C. FELLOWS IN SEPT. 1860

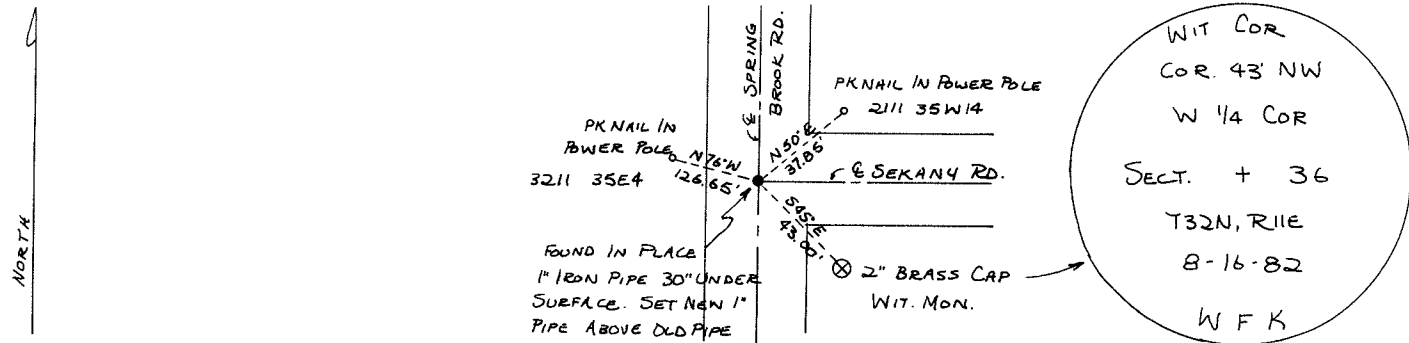
Description of corner evidence found:

FOUND IN PLACE: 1" IRON PIPE 30"
BELOW SURFACE. SET NEW 1"
IRON PIPE ABOVE OLD PIPE.
SET 1 2" x 42" BLACK IRON PIPE
WITH BRASS CAP WITNESS MONUMENT.



William F. Kelly

Description of monument and accessories I established to perpetuate the original location of this corner.



Dated at ELCHO, Wis., this 16th day of AUG., 1982.

Signature William F. Kelly Title COUNTY SURVEYOR Registration No. 1098
(County Surveyor, Registered Land Surveyor, or other duly authorized official)

Office of Register of Deeds, County of, I hereby certify that the within instrument was filed in this office for record on the day of, 19..... at o'clock M.

(Register of Deeds)

By..... Deputy