

CERTIFIED LAND CORNER RESTORATION

Index No. Y-21

State of Wisconsin } ss.
County of LANGLADE

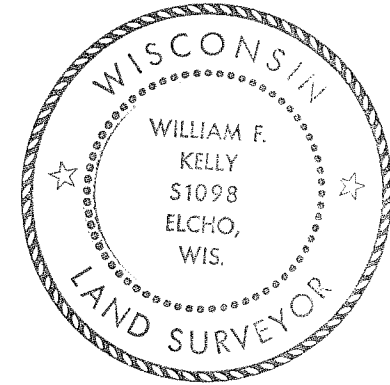
I WILLIAM F. KELLY, do hereby certify that on the 9th day of SEPT., 1982, I found evidence of the S 1/4 COR. ON E. LINE corner of SECT. 35 Township 32 North, Range 11 EAST, Fourth Principal Meridian, as described hereon; and that from this evidence I established a new monument and accessories as described hereon to perpetuate the original location of this corner.

Resident witnesses:

History of original corner establishment:
CORNER NOT ESTABLISHED
DURING ORIGINAL GOV'T SURVEY.

Description of corner evidence found:

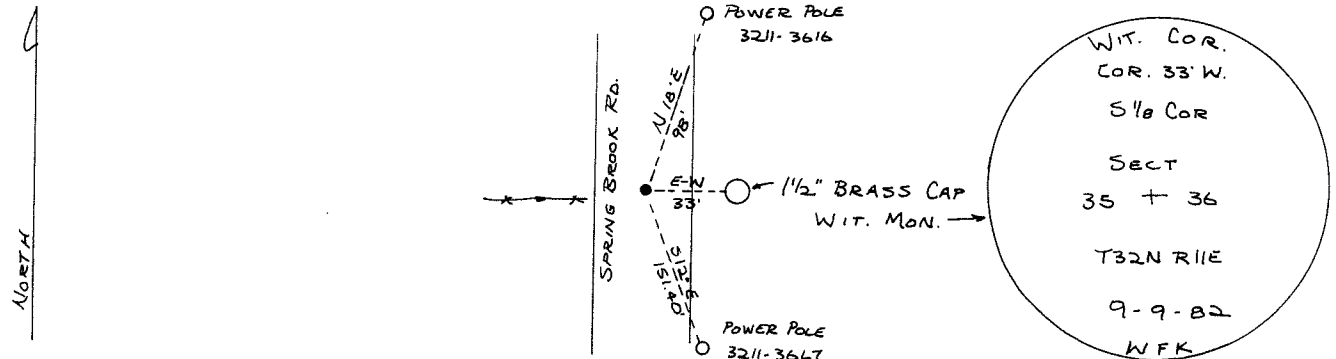
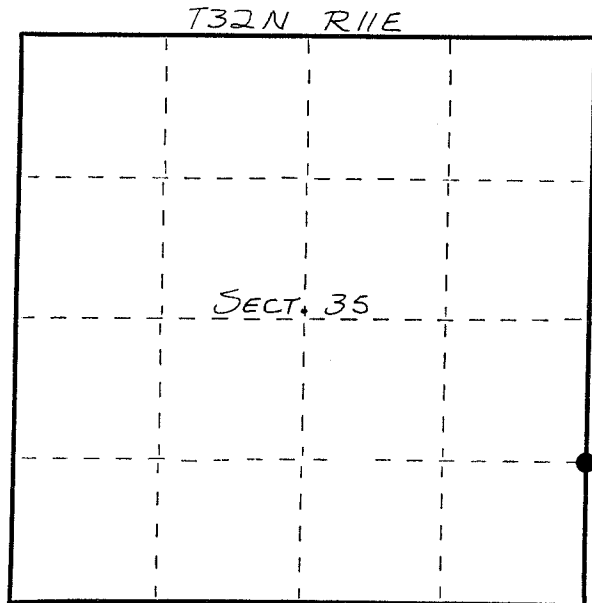
CORNER EST. FROM
SUB DIVISION OF
SECT 36 T32N R11E



William F. Kelly
12-12-82

SET A 1 1/2" x 42" BLACK IRON PIPE WITH BRASS CAP WITNESS MONUMENT.

Description of monument and accessories I established to perpetuate the original location of this corner.



Dated at ELCHO, Wis., this 9th day of SEPT., 1982.

Signature William F. Kelly, Title COUNTY SURVEYOR, Registration No. 1098
(County Surveyor, Registered Land Surveyor, or other duly authorized official)

Office of Register of Deeds, County of _____, I hereby certify that the within instrument was filed in this office for record on the _____ day of _____, 19____ at _____ o'clock _____ M.

(Register of Deeds)

By _____ Deputy

○ = Corner monument restored.