

4321135 0020

# U.S. PUBLIC LAND SURVEY MONUMENT RECORD

(Prepared and as required by S. A-E 7.08 WI Administrative Code)

The      NORTH 1/4      corner of Section   2   T.  31  N., R.  11  E., Langlade County, WI  
Corner was (check all that apply)

- Restored through acceptance of an obliterated evidence location.
- Restored through acceptance of a found perpetuated location.
- Determined to be lost and re-established through proportionate methods. (show bearings and distances to PLSS corners used for proportioning.)
- Restored/recovered/re-established in a location that differs from a previously established position. (Show difference in plan view below.)
- Check here if additional information is shown on the reverse side of this form.

### Describe record evidence, recovered physical evidence, occupational evidence, testimonial evidence, and all other evidence considered in the recovery/restoration of the corner.

1859 - Government Surveyor H.C. Fellows set original quarter section post and marked bearing trees, Birch 20", N 19° E, 12 links, and Ironwood 8", S 10° W, 18 links.

1898 - (FB-97 PG-49) Surveyor Dorr, working in Section 2 along the North-South 1/4 line, notes a distance of 75.54 chains (4985.64'). Dorr also notes "North 1/4 post. Pine stump 24", S13°W, 56-1/4 links.

1921 - (FB-108 PG-94) Surveyor Webley notes the same as Dorr above.

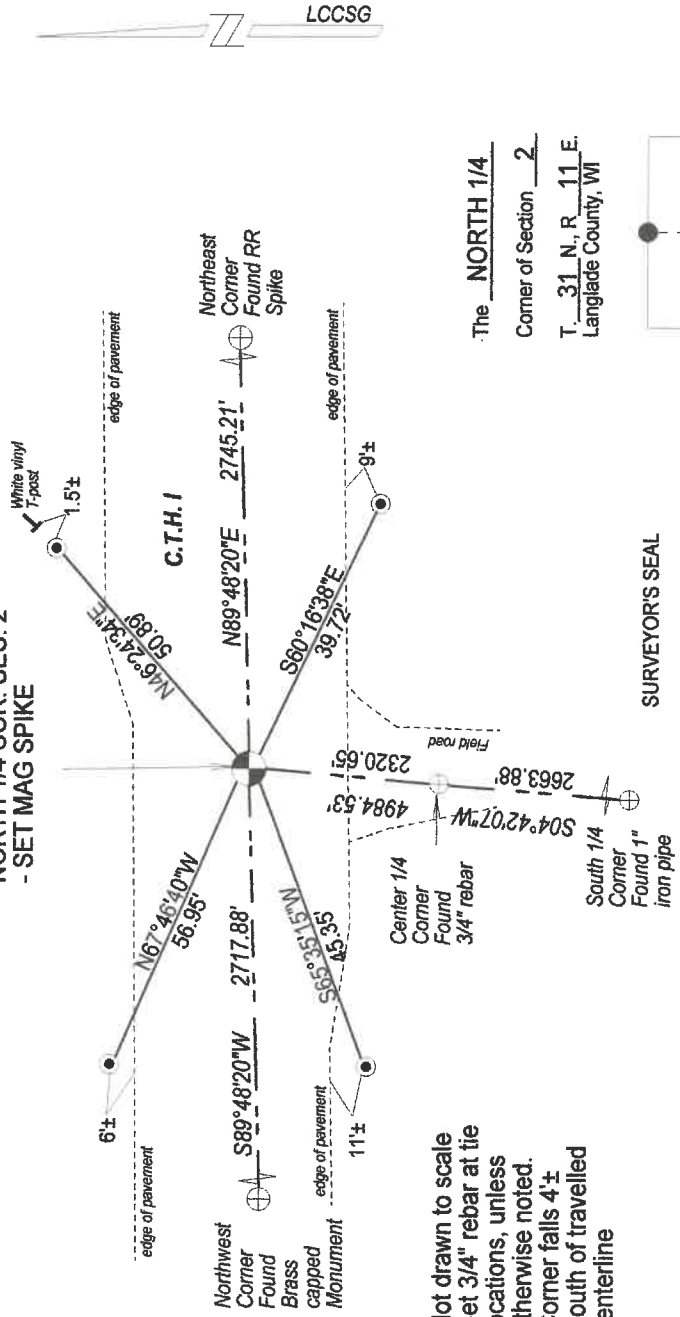
2015 - Working in the NE 1/4 of Section 2, I searched the area and did not find any evidence of the Corner or Dorr's pine stump. I found an existing rebar at the Center 1/4 corner location which was set by Brooks in 1908 and intersected the line from the South 1/4 corner thru the Center 1/4 corner with the line between the Northwest corner and Northeast corner of Section 2. This location matches well with the existing occupation to the North and South. I measured a total distance of 4984.53' along the North-South 1/4 line which matches well with the distance provided by Dorr/Webley (75.54 ch=4985.64'). Corner falls 4± South of the existing travelled centerline of C.T.H. I.

### Physical description of the monument set:

I set a mag spike and tied it out as follows.

Describe the accessories used to perpetuate the location of the corner. Include a plan view drawing and indicate accessories found/set. Describe measuring point on bearing trees. Show any topographic features that would aid in future recovery of the corner.

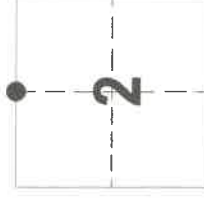
### NORTH 1/4 COR. SEC. 2 - SET MAG SPIKE



- Not drawn to scale
- Set 3/4" rebar at tie locations, unless otherwise noted.
- Corner falls 4± South of travelled centerline

The   NORTH 1/4    
Corner of Section   2    
T.  31  N., R.  11  E.  
Langlade County, WI

SURVEYOR'S SEAL



● = Location of corner



I, Timothy J. Rusch, certify that the corner location shown on this record was determined by me or under my direction and control and that this U.S. Public Land Survey Monument Record is correct and complete to the best of my knowledge and belief.

Timothy J. Rusch  
Signature

07-21-2020  
Date