

# U.S. PUBLIC LAND SURVEY MONUMENT RECORD

(Prepared and as required by S. A-E 7.08 WI Administrative Code)

The SOUTHEAST corner of Section 35, T. 32 N., R. 11 E., Langlade County, WI  
 Corner was (check all that apply)

- Restored through acceptance of an obliterated evidence location.
- Restored through acceptance of a found perpetuated location.
- Determined to be lost and re-established through proportionate methods. (show bearings and distances to PLSS corners used for proportioning.)
- Restored/recovered/re-established in a location that differs from a previously established position. (Show difference in plan view below.)
- Check here if additional information is shown on the reverse side of this form.

**Describe record evidence, recovered physical evidence, occupational evidence, testimonial evidence, and all other evidence considered in the recovery/restoration of the corner.**

1859 - Original corner established by H.C. Fellows - bearing trees: Birch, 23", N50°W, 10 links; Sugar, 20", N33°E, 18 links; Pine, 10", S38°E, 12 links, and Pine 48", S27°W, 10 links.

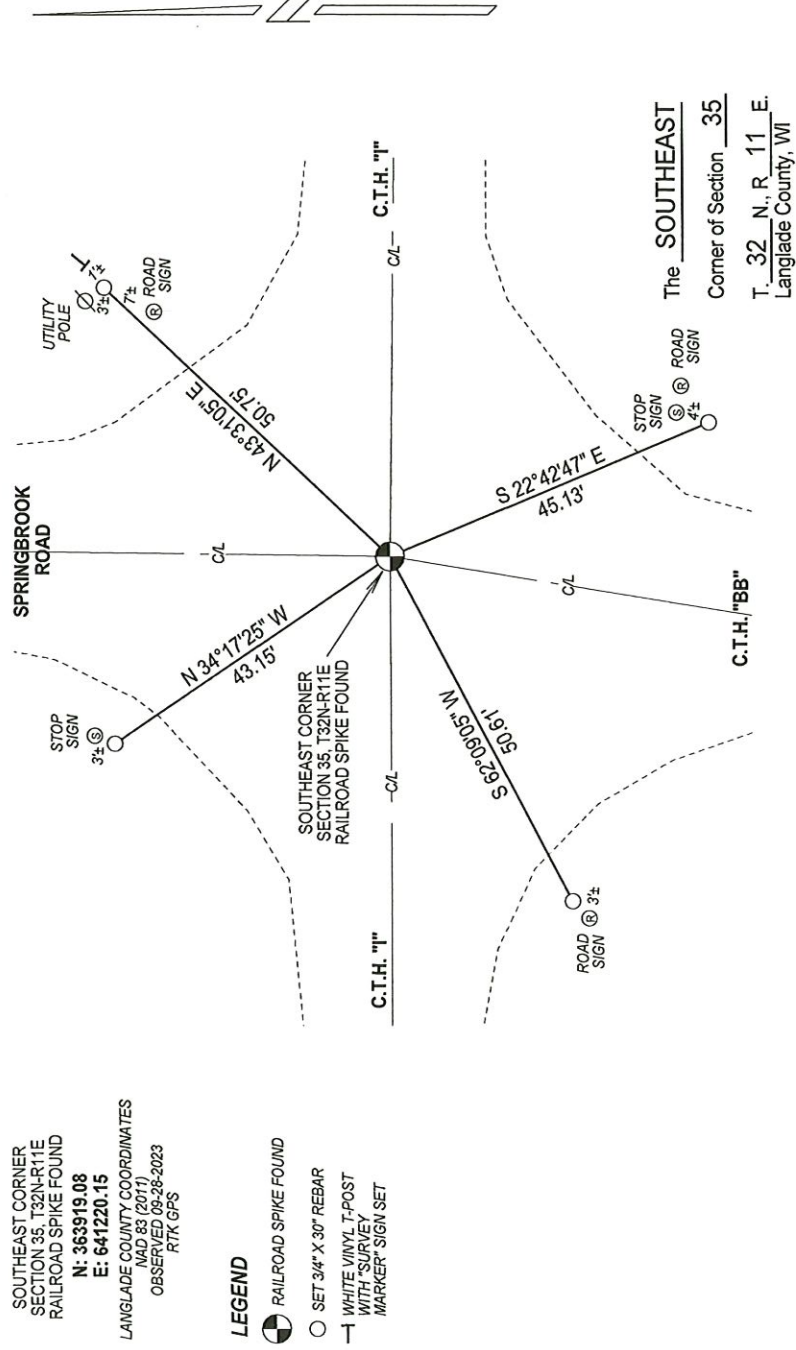
1982 - William Kelly "no evidence of original corner located. Corner established as occupied." Kelly set a railroad spike at the corner, made ties and filed a tie sheet.

2023 - I found railroad spike set by Kelly 3" below road surface. Location matches previous survey work in the area.

**Physical description of the monument set:**

Accepted railroad spike as corner location and tied out as shown below.

Describe the accessories used to perpetuate the location of the corner. Include a plan view drawing and indicate accessories found/set. Describe measuring point on bearing trees. Show any topographic features that would aid in future recovery of the corner.



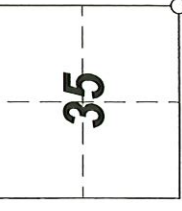
NOTES  
 - SKETCH NOT DRAWN TO SCALE.  
 - TIE BEARINGS SHOWN ARE LANGLADE COUNTY GRID BEARINGS.  
 - ALL TIES MEASURED ELECTRONICALLY WITH TOTAL STATION.



I, Michael J. Hoffman certify that the corner location shown on this record was determined by me or under my direction and control and that this U.S. Public Land Survey Monument Record is correct and complete to the best of my knowledge and belief.

Michael J. Hoffman Signature  
09-28-2023 Date

SURVEYORS SEAL



○ = Location of corner

CERTIFIED LAND CORNER RESTORATION

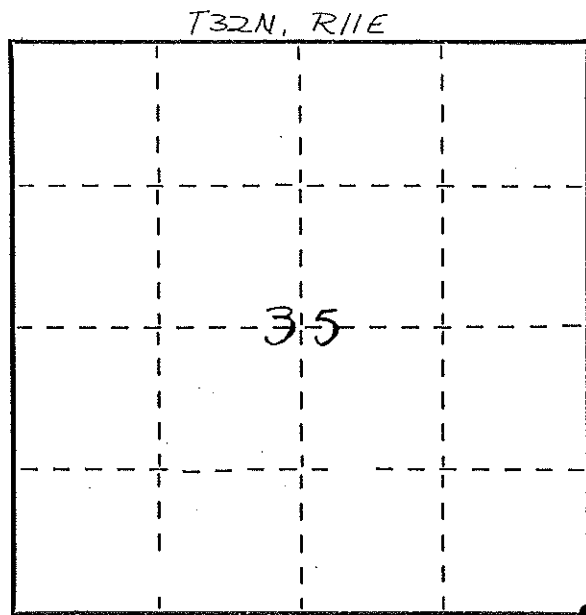
Index No. Z-21

State of Wisconsin }  
County of LANGLADE } ss.

I, WILLIAM F. KELLY, do hereby certify that on the 29<sup>th</sup> day of JULY, 1982, I found evidence of the SE corner of SECT. 35 Township 32, North, Range 11 EAST, Fourth Principal Meridian, as described hereon; and that from this evidence I established a new monument and accessories as described hereon to perpetuate the original location of this corner.

Resident witnesses:

.....  
.....  
.....



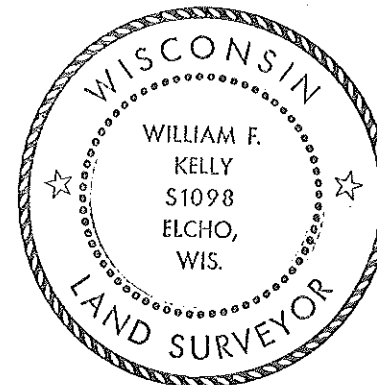
○ = Corner monument restored.

History of original corner establishment:

ORIGINAL CORNER ESTABLISHED BY  
HIRAM C. FELLOWS IN SEPT. 1860.

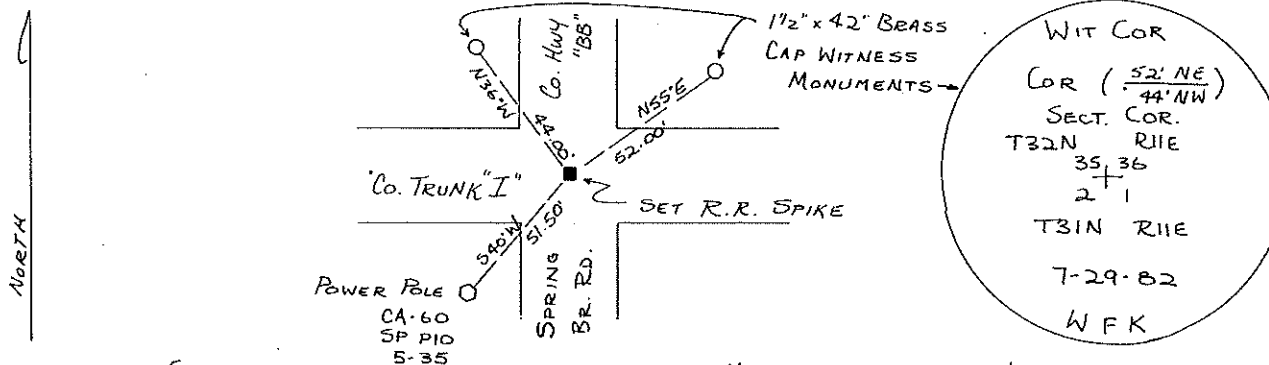
Description of corner evidence found:

No Evidence of Original Corner Located. Corner Established as Occupied



*William F. Kelly*

Description of monument and accessories I established to perpetuate the original location of this corner.



Dated at ELCHO, Wis., this 29<sup>th</sup> day of JULY, 1982

Signature William F. Kelly Title COUNTY SURVEYOR Registration No. 1098  
(County Surveyor, Registered Land Surveyor, or other duly authorized official)

Office of Register of Deeds, County of....., I hereby certify that the within instrument was filed in this office for record on the..... day of....., 19..... at..... o'clock..... M.

(Register of Deeds)

By..... Deputy