

LANGLADE COUNTY U.S. PUBLIC LAND CORNER RESTORATION

The East Quarter corner of Section 32, T. 32 N., R. 11 E., Langlade County, WI.

Corner was: (check all that apply)

- Restored through acceptance of an obliterated evidence location.
- Restored through acceptance of a found perpetuated location.
- Determined to be lost and re-established through proportionate methods.
- Show bearings and distances to PLSS corners used for proportioning, and show original distances).
- Restored/recovered/re-established in a location that differs from a previously established position.
- (Show difference in plan view below).
- Check here if additional information is shown on the reverse side of this form.

4321132 2000

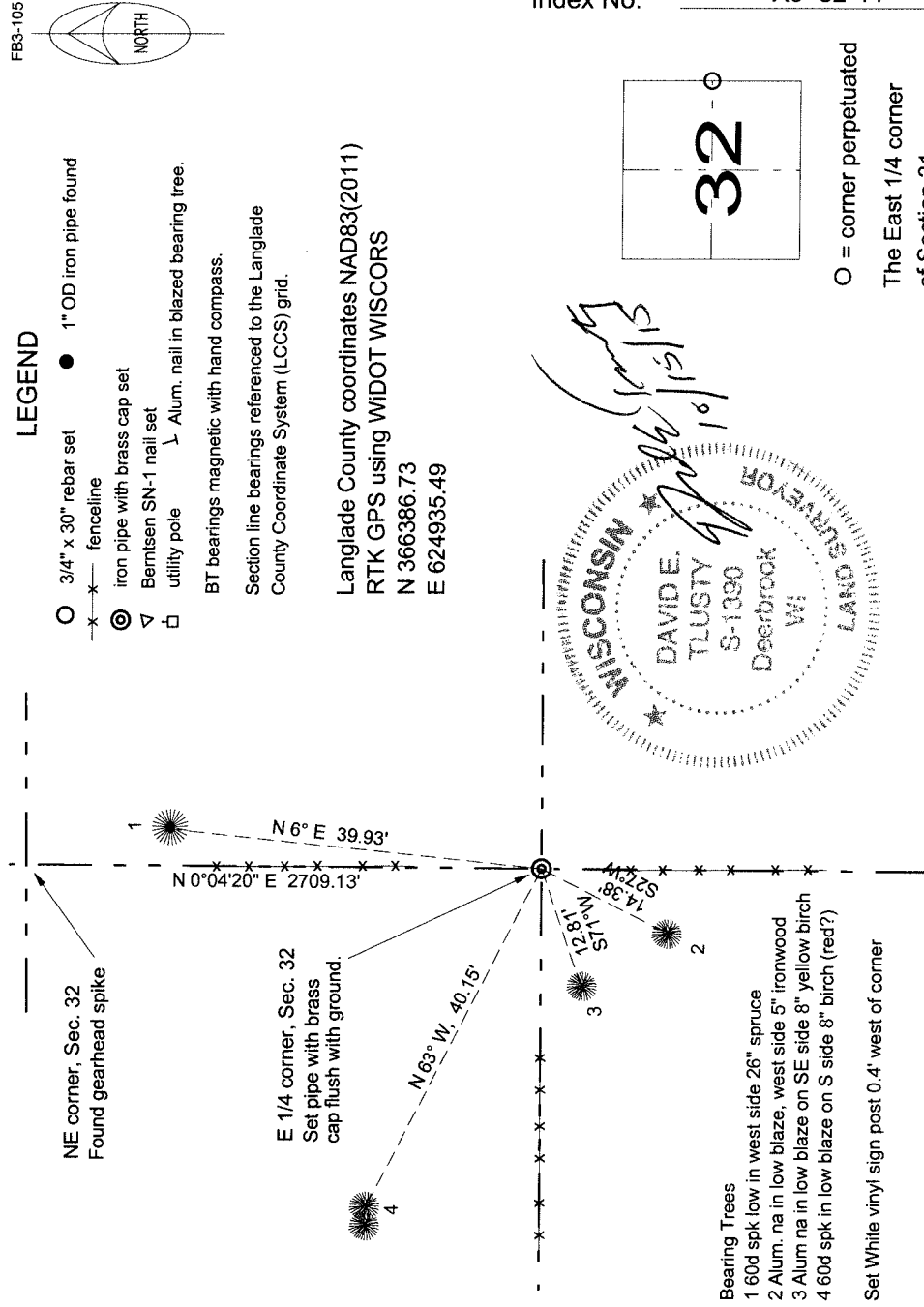
Describe record evidence, recovered physical evidence, occupational evidence, testimonial evidence and all other evidence considered in the recovery/restoration of the corner.

The original corner was established in 1860 by Hiram Fellows. Original bearing trees: sugar, 15", S28°E, 16 links and a sugar, 12", N 66° W, 14 links.
 In Fb 140-42, Dorr, in approximately 1886, measured the E-W quarter line in Section 33 as 81.34 ch (5368.4 ft). He didn't mention the quarter corners, but being only 26 years after the original survey, one could presume that he had the original posts.
 D. Tlusty. 09/02/2015 After measuring to the Section corners north and south of here and finding E-W 16th line fences both north and south of here, I accepted the location of an old corner fence post hole at the intersection of a north-south fenceline with a fence running west, as the best evidence of the previously established location of the quarter corner.

Physical description of the monument set:

I set a 1 1/4" ID x 36" iron pipe with a 4" dia. brass cap flush with the ground.
 Set White vinyl sign post 0.4' west of corner

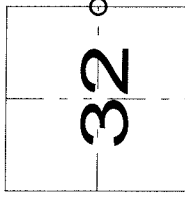
Describe the accessories used to perpetuate the corner. Include a plan view drawing and accessories found/set. Describe measuring point on bearing trees. Show any topographic features that would aid in future recovery of the corner.



- Bearing Trees**
- 1 60d spk low in west side 26" spruce
 - 2 Alum. na in low blaze, west side 5" ironwood
 - 3 Alum na in low blaze on SE side 8" yellow birch
 - 4 60d spk in low blaze on S side 6" birch (red?)

Set White vinyl sign post 0.4' west of corner

Index No. X9 32-11



O = corner perpetuated
 The East 1/4 corner of Section 31, T. 32 N., R. 11 E., Langlade County, WI

I, David E. Tlusty, Registered Land Surveyor, as Langlade County Surveyor, certify that the corner location on this record was determined by me and that this U.S. Public Land Survey Monument Record is correct to the best of my knowledge and belief.