

**LANGLADE COUNTY
U.S. PUBLIC LAND CORNER RESTORATION**

The Southeast corner of Section 32, T. 32 N., R. 11 E., Langlade County, WI.

Corner was: (check all that apply)

4321132 0000

- Restored through acceptance of an obliterated evidence location.
- Restored through acceptance of a found perpetuated location.
- Determined to be lost and re-established through proportionate methods.
- Show bearings and distances to PLSS corners used for proportioning, and show original distances).
- Restored/recovered/re-established in a location that differs from a previously established position.
- Check here if additional information is shown on the reverse side of this form.

Describe record evidence, recovered physical evidence, occupational evidence, testimonial evidence and all other evidence considered in the recovery/restoration of the corner.

The original corner was established in 1859 by Hiram C. Fellows. Original bearing trees: sugar, 10", N53°W, 22 links; elm, 10", N22°E, 39 links; sugar, 10", S26°E, 23 links and a sugar, 10", S55°W, 26 links. In 1904, B. F. Dorr described the corner as "old stake and brick bats". After preliminary measurement, on 06/29/09, dug with backhoe. At 3.1' below road surface, found a piece of 1" pipe driven into the corner of a 3" x 3" wood post point. Also found several small piece of red brick material, brick bats mentioned by Dorrs. All evidence found just at the original ground level as evidenced by a thin topsoil layer. Accepted the wood post as the best evidence of the original corner location.

Physical description of the monument set:

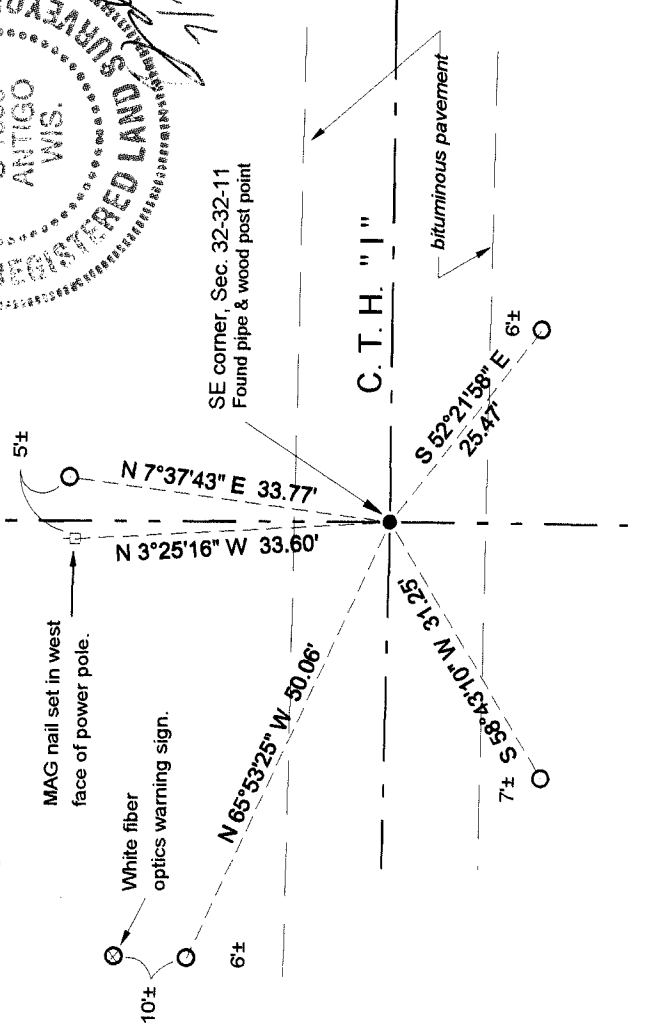
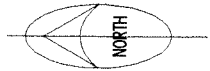
Left existing wood post point and pipe in place.
The road is to be paved in the near future so no surface mark has been set.

Describe the accessories used to perpetuate the corner. Include a plan view drawing and accessories found/set. Describe measuring point on bearing trees. Show any topographic features that would aid in future recovery of the corner.

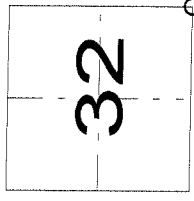
LEGEND

- 3/4" x 30" rebar set
 - iron pipe found
 - utility pole
 - Set white vinyl sign post
- Bearings are Langlade County Coordinate System grid bearings.

FB 2-99



Index No. Z9 32-11



○ = corner perpetuated

The Southeast corner
of Section 32,
T. 32 N., R. 11 E.,
Langlade County, WI

I, David E. Thusty, Registered Land Surveyor, as Langlade County Surveyor, certify that the corner location on this record was determined by me and that this U.S. Public Land Survey Monument Record is correct to the best of my knowledge and belief.