

LANGLADE COUNTY U.S. PUBLIC LAND CORNER RESTORATION

The South Quarter corner of Section 31, T. 32 N., R. 11 E., Langlade County, WI.

Corner was: (check all that apply)

3211310020

- Restored through acceptance of an obliterated evidence location.
- Restored through acceptance of a found perpetuated location.
- Determined to be lost and re-established through proportionate methods.
- Show bearings and distances to PLSS corners used for proportioning, and show original distances).
- Restored/recovered/re-established in a location that differs from a previously established position.
- (Show difference in plan view below).
- Check here if additional information is shown on the reverse side of this form.

Describe record evidence, recovered physical evidence, occupational evidence, testimonial evidence and all other evidence considered in the recovery/restoration of the corner.

The original corner was established in 1859 by Hiram Fellows. Original bearing trees: elm, 8", N27°E, 18 links and a elm, 7", S30°W, 28 links. In 1894, Joseph Duchac surveyed in Section 6-31-11, showed this corner at the center of the road intersection and called it a "body of a cylinder". He also measured to the west and south of here. In 1899, B.F. Dorr (FB97-68) used this corner (but didn't describe it) and measured west from here. 06/16/97 D. Tlusty, Mike Kielcheski dug with a County backhoe and found a 6' x 8" stone with a chiseled "+" on top, down 2.0' below the road surface. Accepted stone as a perpetuation of the corner first described by Duchac and later used by Dorr.

Physical description of the monument set:

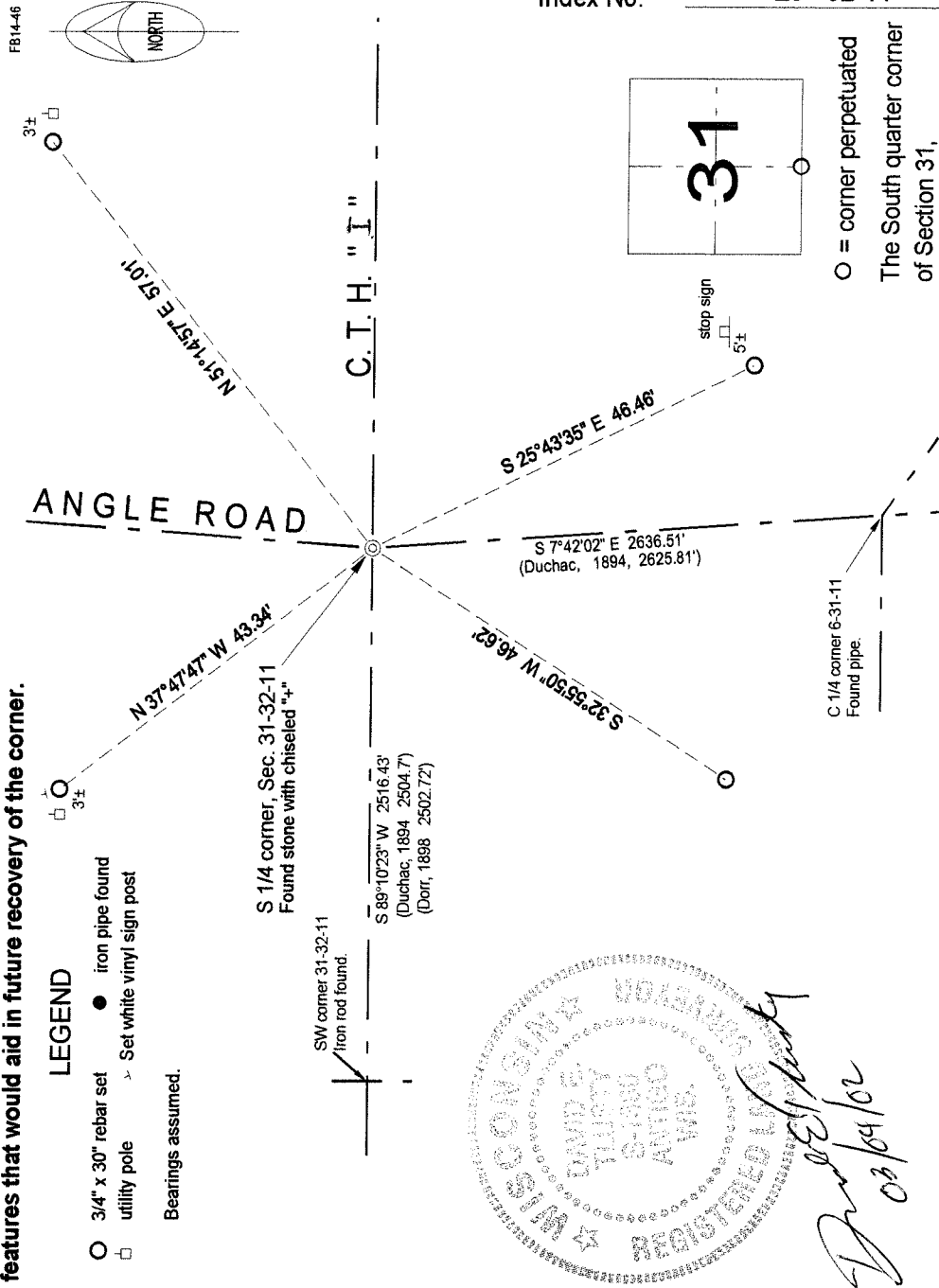
Left existing stone in place. Set 3/4" x 30" rebar 0.45' south of + on stone.

Describe the accessories used to perpetuate the corner. Include a plan view drawing and accessories found/set. Describe measuring point on bearing trees. Show any topographic features that would aid in future recovery of the corner.

LEGEND

- 3/4" x 30" rebar set
- iron pipe found
- utility pole
- Set white vinyl sign post

Bearings assumed.



I, David E. Tlusty, Registered Land Surveyor, as Langlade County Surveyor, certify that the corner location on this record was determined by me and that this U.S. Public Land Survey Monument Record is correct to the best of my knowledge and belief.