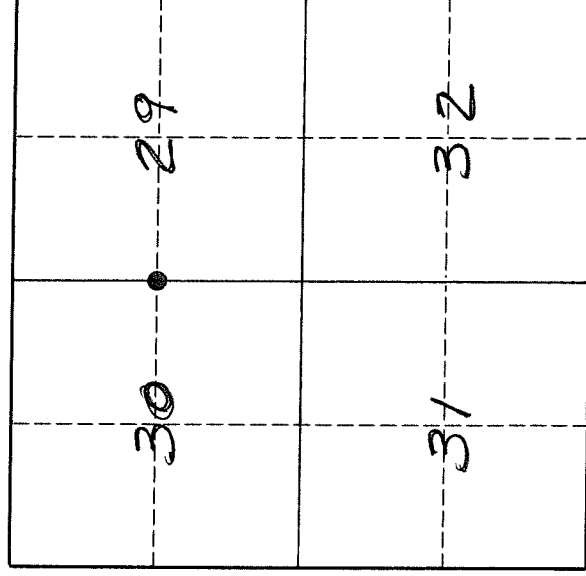


# U. S. PUBLIC LAND SURVEY MONUMENT RECORD

**INSTRUCTIONS:**

This record shall show the location of the corner and shall include all of the following nine elements (a through i).

- (a) Identify the corner by reference to the U.S. public land survey system.  
 ● = Corner monument restored.



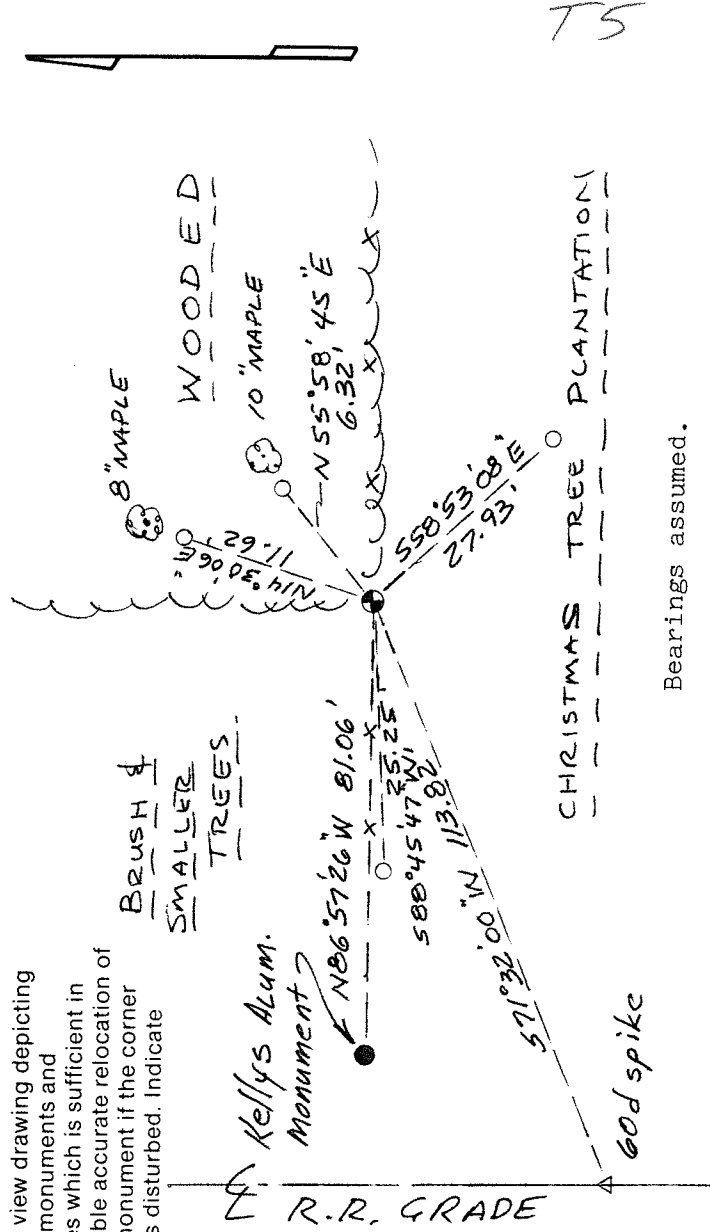
The West Quarter corner of Section 29, Township 32 North, Range 11 East, Langlade County, Wisconsin.

T. 32 N., R. 11 E.

- (b) Describe any record evidence, monument evidence, occupational evidence, testimonial evidence or any other material evidence you considered, and whether the monument was found or placed.  
 The original corner was established in 1860 by Hiram C. Fellows. Original corner BT's: birch, 15", S10°W, 25 lks., and a maple, 15", N20°E, 20 lks. In 1887, B.F. Dorr, on the plat of the Village of Neva said he set a pine post for the corner and marked BT's: pine stump, 20", S40½°E, 29¼ lks., and a Y. birch, 12", N26½°W, 24½ lks. On that plat he shows the corner as being 107.35' east of the center of the RR. Former surveyor Kelly in 1984, completely ignored the data shown on the plat of the Village of Neva and set the corner by single proportionate measurement. On 09/29/94, I set a new monument for the corner, 107.35' east of the center of the RR grade, and on a very old fenceline (all down) running east and west. This corner is 81' east of Kellys' corner. For the corner, I set and iron pipe with brass cap and marked it with a white vinyl sign post.

- (c) In the plan view drawing below, provide reference ties to at least 4 witness monuments, or, if the location is within a municipality, to at least 2 witness monuments. (Witness monuments shall be made of concrete, natural stone, iron or other equally durable material). Describe witness monuments.  
 ○ = 1" iron pipe

- (d) Show a plan view drawing depicting the relevant monuments and reference ties which is sufficient in detail to enable accurate relocation of the corner monument if the corner monument is disturbed. Indicate north.



Bearings assumed.

TS

