

LANGLADE COUNTY U.S. PUBLIC LAND CORNER RESTORATION

The South Quarter corner of Section 30, T. 32 N., R. 11 E., Langlade County, WI.

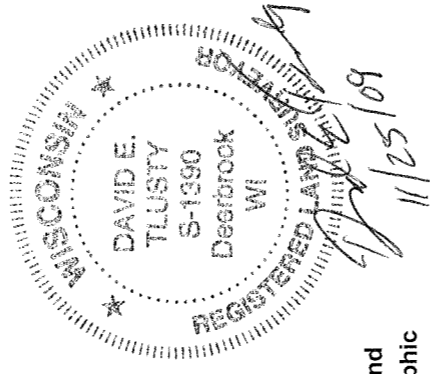
Corner was: (check all that apply)

4321130 0020

- Restored through acceptance of an obliterated evidence location.
- Restored through acceptance of a found perpetuated location.
- Determined to be lost and re-established through proportionate methods.
- Show bearings and distances to PLSS corners used for proportioning, and show original distances).
- Restored/recovered/re-established in a location that differs from a previously established position.
- (Show difference in plan view below).
- Check here if additional information is shown on the reverse side of this form.

Describe record evidence, recovered physical evidence, occupational evidence, testimonial evidence and all other evidence considered in the recovery/restoration of the corner.

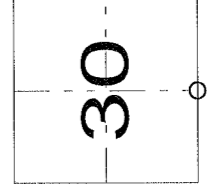
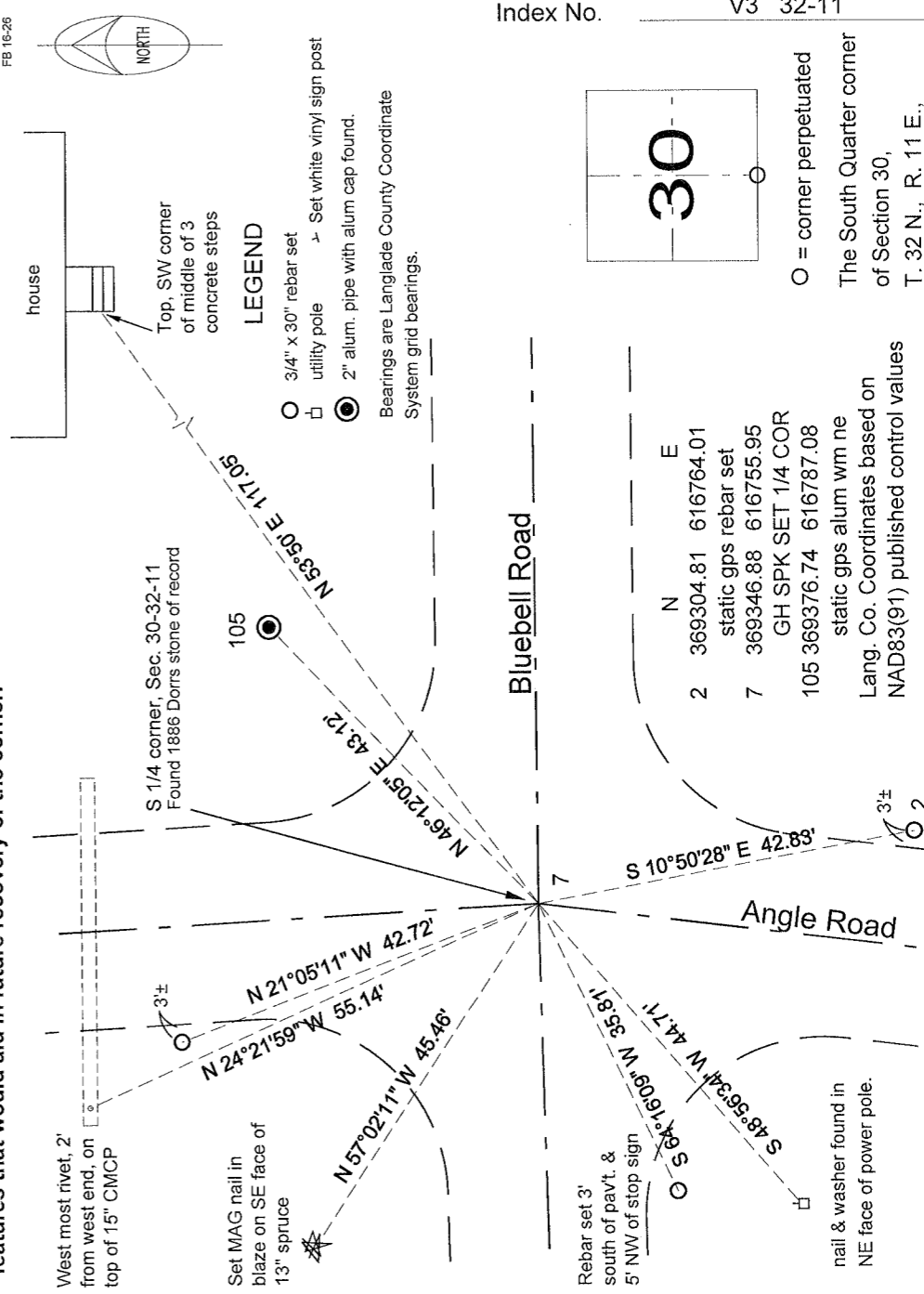
See history on reverse side



Physical description of the monument set:

I left the existing stone monument in place.

Describe the accessories used to perpetuate the corner. Include a plan view drawing and accessories found/set. Describe measuring point on bearing trees. Show any topographic features that would aid in future recovery of the corner.



O = corner perpetuated
The South Quarter corner of Section 30, T. 32 N., R. 11 E., Langlade County, WI

I, David E. Tlusty, Registered Land Surveyor, as Langlade County Surveyor, certify that the corner location on this record was determined by me and that this U.S. Public Land Survey Monument Record is correct to the best of my knowledge and belief.

LANGLADE COUNTY
U.S. PUBLIC LAND CORNER RESTORATION

**The South Quarter corner of Section 30, T.32N., R.11 E.,
Langlade County, WI**

Corner history:

- 1860 The original corner was established by Hiram Fellows, Deputy Surveyor. Original bearing trees marked: sugar, 8", N76°E, 14 links and a sugar, 10", South, 7 links.
- 1879 Deleglise in FB144-21, on a road survey on the N-S ¼ line in Sec. 30 and 31 said: "Original ¼ post lying down on ground. Found the point of it in the ground. Set a new post in the original hole." He measured to original bearing trees: sugar, 8", N71°E, 15 links and a sugar, 12" S 1 ½°W, 6 ½ links. He marked two new bearing trees: sugar, 11", S 43 ¾°E, 23½ links and a pine, 20", N69°W, 57¾ links.
- 1882 B.F. Dorr, in FB140-110, measured from this corner north 78.92 chains (5208.72') but he did not describe this corner or the other one he went to.
- 1883 B.F. Dorr, in FB144-7, measured from this corner south, 81.72 ch (5393.52'). He did not describe this corner.
- 1885 B.F. Dorr, in FB140-26, measured the N-S ¼ line in Section 30 as 78.88 chains (5206.08').
- 1885 B.F. Dorr, on the recorded Plat of Reeve, gives a detailed description of the evidence he set for this corner: "That to permanently establish the center line of First Avenue on the straight section line, I have set.....at the south-quarter post of said section 30, a bluish boulder, 9 x 18 inches and 12 inches thick. In the top of each of the above stones is a half inch hole, 2 inches deep, filled with stone coal. Said hole is the point from which to measure. Directly under said hole, and under the stone, is a one and quarter inch hole in the ground six inches deep filled with stone coal. Over the hole in each stone is a tapering pine post four feet long, and five to five and half inches square at the top, with a nail head in the top, directly over the hole in the stone. The top of said stones is four feet below the surface of the ground..."
- 1986 Former surveyor Kelly, on the sheet, said: "Located evidence of Hutchinson corner. Set new wit. Monument 11-17-86. Set R.R. spike over existing iron in road."
- 2009 Dave Tlusty, I can find to record that indicates that Hutchinson was at this corner as Kelly stated. In the available records, there is no mention of any monument set other than Dorr's stone in 1885. On Aug 29, 2009, using a County backhoe, we dug for the corner evidence mentioned above. Found nothing below the existing railroad spike. At 2.5' deep, found a 1" x 24" iron rod. At 6.0' deep, found the stone mentioned by Dorr, which I measured the exposed top surface as 18" x 10". Also found hole in the stone, filled with coal, as mentioned by Dorr. I accept this stone as the best evidence of the original corner location. I set a plastic encased magnet on the SE edge of this stone and reset the 1" iron rod found, on the NW edge of the stone. The railroad spike (Kelly's) found was N 21°28' E, 2.30 feet from the stone found. The 1" iron rod found was S 3°21' W, 1.15 feet from the stone found. I set and measured the ties shown on Page 1.

