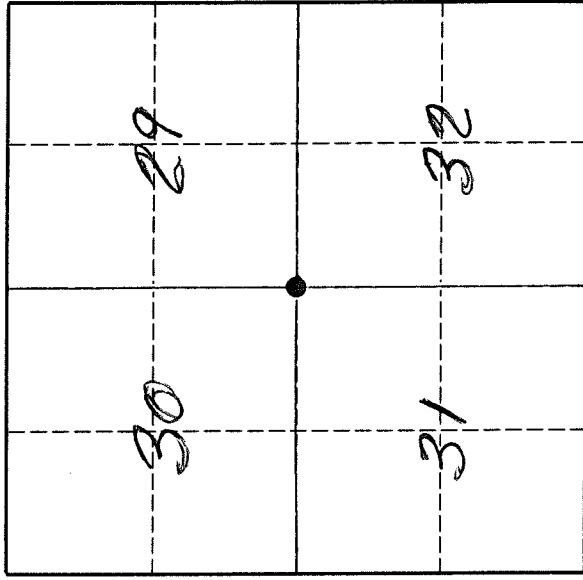


# U. S. PUBLIC LAND SURVEY MONUMENT RECORD

**INSTRUCTIONS:**

This record shall show the location of the corner and shall include all of the following nine elements (a through i).

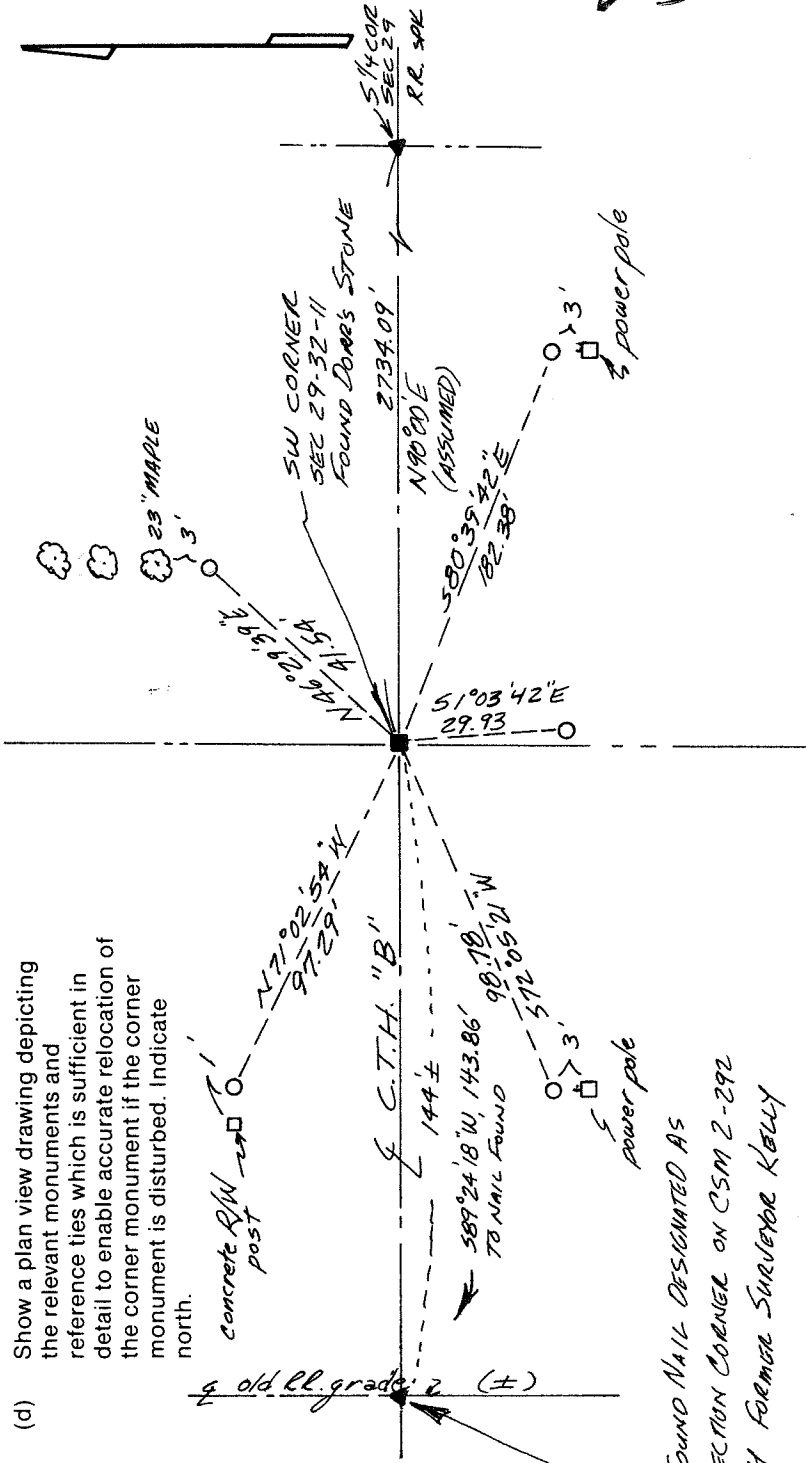
- (a) Identify the corner by reference to the U.S. public land survey system.
- = Corner monument restored.



T. 32 N., R. 11 E.

The southwest corner of Section 29, Township 32 North, Range 11 East, Langlade County, Wisconsin.

- (b) Describe any record evidence, monument evidence, occupational evidence, testimonial evidence or any other material evidence you considered, and whether the monument was found or placed.  
 The original corner was established in 1860 by H.C. Fellows. Original B.T.'s: elm, 10", N14°E, 8 lks., elm, 7", S57°W, 10 lks. In 1882, B.F. Dorr measured from this corner to the East, 2727.12'. In 1886, on the Plat of Reeve, Dorr described this corner as a bluish stone, 15" x 35" x 12" thick, with 1/2" hole filled with stone coal. Dorr shows the corner as being in the center of First Avenue (now C.T.H. "B") and 144.83 feet from the center of the railroad to the west. 09/04/96 D. Flusty, Mike Kielcheski, Tom Arnott measured 145' from apparent center of railroad grade and dug in the center of C.T.H. "B". Found Dorrs' bluish stone with 1/2" hole, 5.7' below the road surface. Accepted stone as the best evidence of the original corner location and perpetuated said location as shown by at least 4 witness monuments, or, if the location is within a municipality, to at least 2 witness monuments. (Witness monuments shall be made of concrete, natural stone, iron or other equally durable material.) Describe witness monuments.  
 ○ = 3/4" x 30" RE-BAR WITH RED PLASTIC CAP SET.
- (c) If the plan view drawing below, provide reference ties to at least 4 witness monuments. (Witness monuments shall be made of concrete, natural stone, iron or other equally durable material.) Describe witness monuments.  
 ○ = 3/4" x 30" RE-BAR WITH RED PLASTIC CAP SET.



FOUND NAIL DESIGNATED AS SECTION CORNER ON CSM 2-292 BY FORMER SURVEYOR KELLY

Describe any material discrepancy between the location of the corner as restored or reestablished and the location of that corner as previously restored or reestablished by distance and direction. Show the discrepancy on the plan view drawing under (d), above. Show the distances between the corner as previously restored or reestablished and (1) the corner as restored or reestablished, and (2) to at least 2 of the witness monuments shown on the drawing in (d), above.

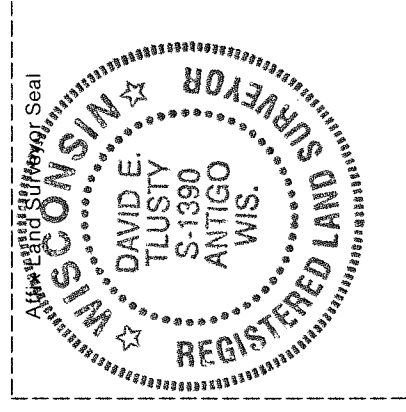
The recovered stone of record is 144'+ (see sketch on front) east of a nail found which former surveyor Kelly shows (CSM2-292) as being the section corner.

- (f) Was the corner restored through acceptance of (1) an obliterated evidence location, or, (2) a found perpetuated location?  
A found perpetuated location.

The recovered corner stone was witnessed by:  
Gene Jacobus, adjoining landowner and Town of Neva Chairman  
Jerry Aulik, nearby landowner

- (g & h) Was the corner reestablished through lost corner proportionate methods? If so, show the method, including the directions and distances to other public land survey corners used as evidence or used for proportioning in determining the corner location.

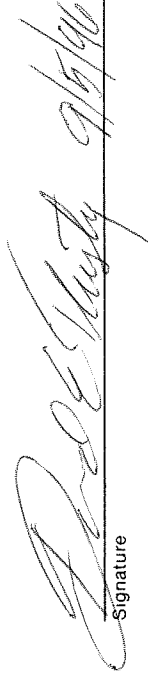
No.



- (i) I, David E. Tlusty, Langlade County Surveyor,

(type or print name)

certify that the corner location shown on this record was determined by me or under my direction and control and that this U.S. Public Land Survey Monument Record is correct and complete to the best of my knowledge and belief.



Signature

Date