

LANGLADE COUNTY U.S. PUBLIC LAND CORNER RESTORATION

The South Quarter corner of Section 29, T. 32 N., R. 11 E., Langlade County, WI.

Corner was: (check all that apply)

- Restored through acceptance of an obliterated evidence location.
- Restored through acceptance of a found perpetuated location.
- Determined to be lost and re-established through proportionate methods.
 Show bearings and distances to PLSS corners used for proportioning, and show original distances).
- Restored/recovered/re-established in a location that differs from a previously established position.
 (Show difference in plan view below).
- Check here if additional information is shown on the reverse side of this form.

4321129 0020

Describe record evidence, recovered physical evidence, occupational evidence, testimonial evidence and all other evidence considered in the recovery/restoration of the corner.

See history on reverse side

Physical description of the monument set:

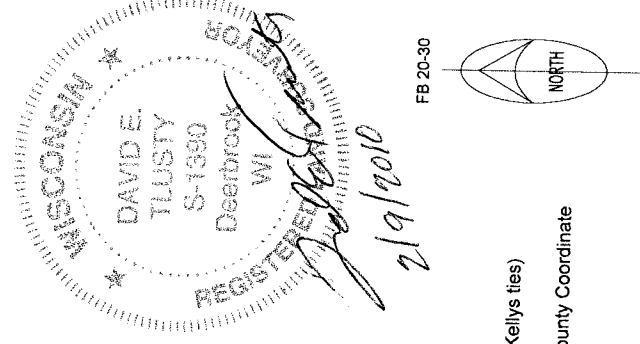
I left the existing stone of record in place. Using my temporary ties, a WIDOT survey crew set a gear headed spike for the corner in a new pavement patch.

Describe the accessories used to perpetuate the corner. Include a plan view drawing and accessories found/set. Describe measuring point on bearing trees. Show any topographic features that would aid in future recovery of the corner.

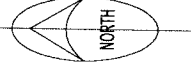
- 1 369453.66 622272.14
REBAR SET: obs static gps
- 6 369309.88 622338.36
IP FND: obs static gps
- 4 369288.39 622257.68
1/4 corner, stone found
Lang. Co. Coordinates based on
NAD83(91) published control values

Kellys remaining two ties would put "his" corner, N 65° E, 0.50' from the stone found.

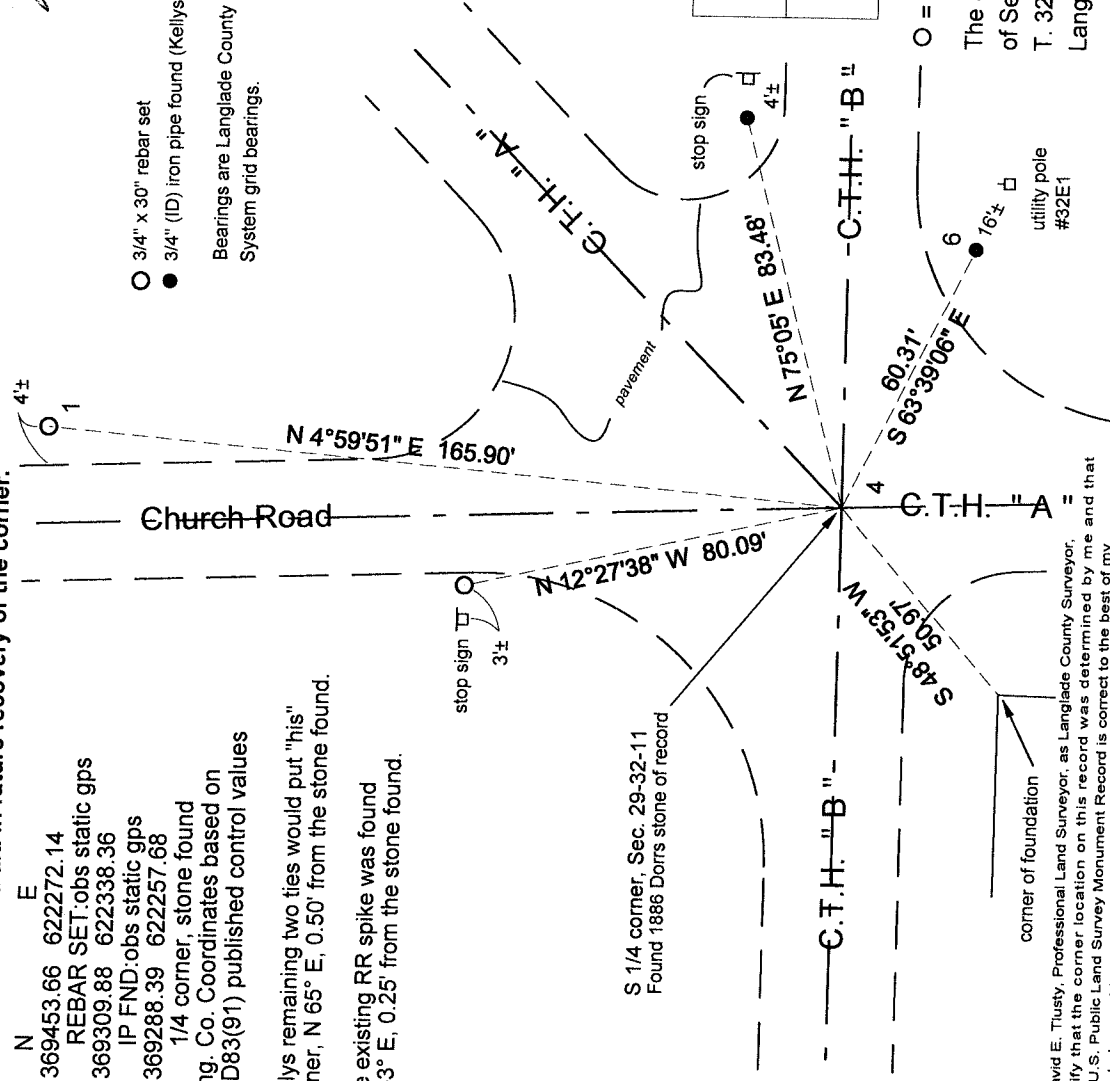
The existing RR spike was found N 53° E, 0.25' from the stone found.



FB 20-30



- 3/4" x 30" rebar set
 - 3/4" (ID) iron pipe found (Kellys ties)
- Bearings are Langlade County Coordinate System grid bearings.



Index No.

V7 32-11

○ = corner perpetuated
 The South Quarter corner of Section 29, T. 32 N., R. 11 E., Langlade County, WI

I, David E. Tlusty, Professional Land Surveyor, as Langlade County Surveyor, certify that the corner location on this record was determined by me and that this U.S. Public Land Survey Monument Record is correct to the best of my knowledge and belief.

LANGLADE COUNTY
U.S. PUBLIC LAND CORNER RESTORATION
The South Quarter corner of Section 29, T.32N., R.11 E.,
Langlade County, WI

Corner history:

- 1860 The original corner was established by Hiram Fellows, Deputy Surveyor. Original bearing trees marked: sugar, 12, S53°E, 27 links and a birch, 20", N4°W, 19 links.
- 1879 Deleglise in FB144-7, shows notes for a road survey on the N-S ¼ line in Sec. 32 (his distance 81.60 ch = 5385.60') and says "N1¼ post". He found and measured both original bearing trees: sugar, 11", S59°E, 27 1/3 links and a birch, 28", N04 ½°W, 19 links. He marked two new bearing trees: sugar, 14", S41°W, 60 ½ links and a sugar, 15", N25°E, 52 ½ links.
- 1882 B. F. Dorr, in FB140-11, measured from this corner west, 41.32 ch then continued west 41.84 ch. From this corner, he measured east, 40.93 ch. He did not describe this corner or the other he went to.
- 1885 B.F. Dorr. In FB140-28 measured from this corner north, 80.40 ch (5306.40'). He did not describe this corner.
- 1886 B.F. Dorr, on the recorded Plat of Reeve, gives a detailed description of the evidence he set for this corner: "That to permanently establish the center line of First Avenue on the straight section line, I have set.....at the south-quarter post of said section 29, a grey boulder - not measured - size about 12 inches x 18 inches and 15 inches thick - wedging toward the top. In the top of each of the above stones is a half inch hole, 2 inches deep, filled with stone coal. Said hole is the point from which to measure. Directly under said hole, and under the stone, is a one and quarter inch hole in the ground six inches deep filled with stone coal. Over the hole in each stone is a tapering pine post four feet long, and five to five and half inches square at the top, with a nail head in the top, directly over the hole in the stone. The top of said stones is four feet below the surface of the ground..."
- 1910 E.S. Brooks in FB94-73 said "T rail in Rd. Set well point N45°W, 0.50 ch.. Set stone on top of T rail & + on stone".
- 1914 Malcolm Hutchinson in FB94-135 said "N from S1¼ post (*this corner*) 80.68 ½ to N ¼ post. Stones set for both corners".
- 1987 Former surveyor Kelly, on the sheet, said: "Set R.R. spike over an existing iron rod in road. Iron rod called for in County Surveyor records". He set and measured ties.
- 2009 D. Tlusty, as there is no record that the iron rod Kelly found is linked to the original or any subsequent evidence, on Aug 29, 2009, using a County backhoe, we dug for the corner evidence mentioned above. Just below the RR spike found, was a 1" x 18" splined shaft, slightly bent. At 2.3' deep we found a 12" x 8" x 15" blue stone with a chiseled X on top which is most likely the stone set by Brooks in 1910. At, 3.1' deep we found a piece of railroad rail, 2' long; the T rail mentioned by Brooks. As Dorr set his stone "...four feet below the surface of the ground.." we dug further and at 6.1' below the road surface, found the stone described by Dorr, complete with a half inch hole filled with stone coal. Based on the 1879 Deleglise record of finding original bearing trees and Dorr's frequent visits to this corner starting only 3 years after the Deleglise record, I accept this stone of Dorr's as the best evidence of the original corner location. I set a plastic encased magnet on the west edge of this stone; a 1" x 30" iron pipe on the south edge of the stone and measured the ties shown on Page 1.

