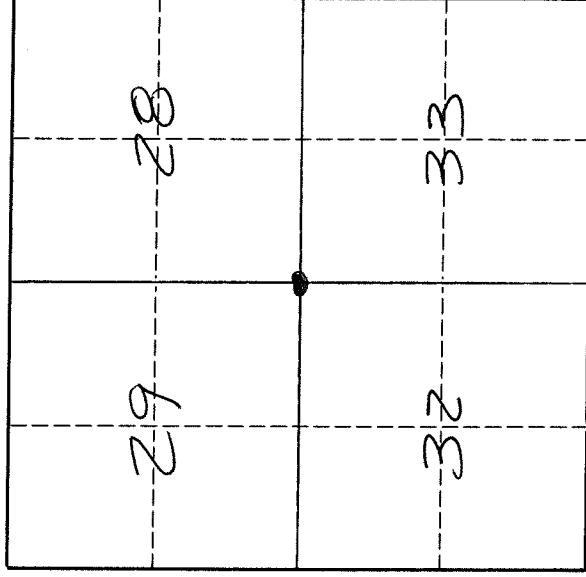


U. S. PUBLIC LAND SURVEY MONUMENT RECORD

I N S T R U C T I O N S:

This record shall show the location of the corner and shall include all of the following nine elements (a through i).

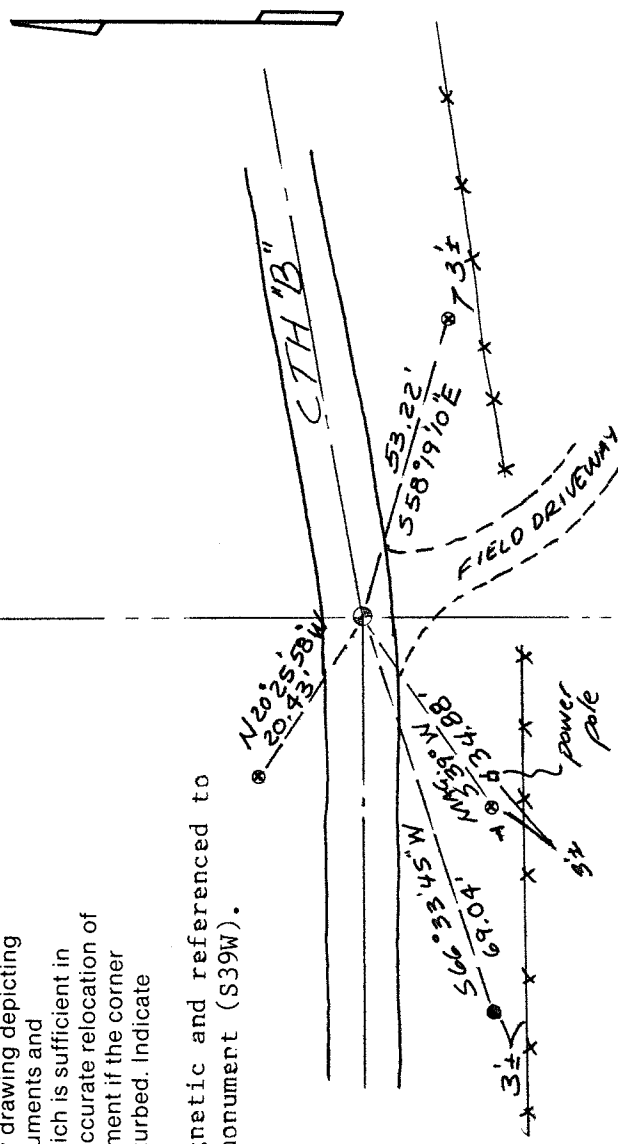
- (a) Identify the corner by reference to the U.S. public land survey system.
 ● = Corner monument restored.
- The Southwest corner of Section 28, Township 32 North, Range 11 East, Langlade County, Wisconsin.



T. 32 N., R. 11 E.

- (b) Describe any record evidence, monument evidence, occupational evidence, testimonial evidence or any other material evidence you considered, and whether the monument was found or placed.
 The original corner was established in 1860 by Hiram C. Fellows. Original bearing trees: Cherry, 8", N20E, 25 lks, and an Elm, 14", S44W, 8 lks. In 1882, B. F. Dorr, found the original corner, found the stumps of the original bearing trees, marked a new BT and measured 2729.8 ft to the S $\frac{1}{4}$ of Section 28. 5/13/92, I traversed from a fence corner near the E $\frac{1}{4}$ corner of Section 32, north through a fence corner in the vicinity of the N1/16 corner of S32 - S33 and extended this line north to determine the E-W location to search for the corner. Or an extension of this line, and at the centerline of CTH "B", I found a 1" x 13" solid iron rod down 25", upright and in good condition. No other evidence found. I measure from this point East to the $\frac{1}{4}$ corner and find the distance to be within 1 foot of Door's distance. Because this point is on an extension of a very old fenceline which started $\frac{1}{4}$ mile south (continued on reverse)
- (c) In the plan view drawing below, provide reference ties to at least 4 witness monuments, or, if the location is within a municipality, to at least 2 witness monuments. (Witness monuments shall be made of concrete, natural stone, iron or other equally durable material). Describe witness monuments.
 ⊗ = 3/4" x 30" re-bar set flush with ground
 ● = 1" x 30" iron pipe set flush with ground
 † = white vinyl sign post set within 0.5' of witness monument
- (d) Show a plan view drawing depicting the relevant monuments and reference ties which is sufficient in detail to enable accurate relocation of the corner monument if the corner monument is disturbed. Indicate north.
 Bearings magnetic and referenced to SW witness monument (S39W).

FB3-101



Describe any material discrepancy between the location of the corner as restored or reestablished and the location of that corner as previously restored or reestablished by distance and direction. Show the discrepancy on the plan view drawing under (d), above. Show the distances between the corner as previously restored or reestablished and (1) the corner as restored or reestablished, and (2) to at least 2 of the witness monuments shown on the drawing in (d), above.

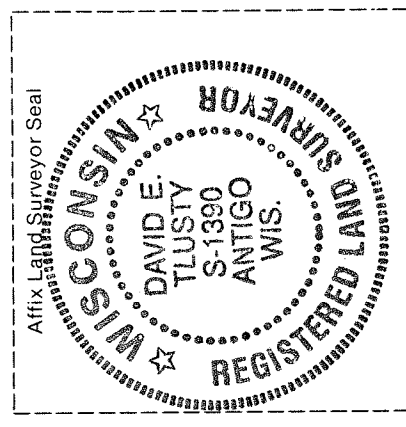
No discrepancy.

- (f) Was the corner restored through acceptance of (1) an obliterated evidence location, or, (2) a found perpetuated location?
A found perpetuated location.

- (g & h) Was the corner reestablished through lost corner proportionate methods? If so, show the method, including the directions and distances to other public land survey corners used as evidence or used for proportioning in determining the corner location.


(continuation from front page)

of here, and the distance to the East is in very good agreement with Dorrs distance, I accept the location of the iron rod as the best evidence of the original corner position. In its place, I set a 1" x 30" iron pipe, top of which is 26" below the road surface. I re-set the found iron rod alongside the new pipe set. Or. 10/04/93, I topped the previously set 1" iron pipe with a 1½ x 26" iron pipe with a 4" brass cap, top of which is flush with the road surface.



- (i) I, David E. Tlusty, Langlade County Surveyor,
(type or print name)

certify that the corner location shown on this record was determined by me or under my direction and control and that this U.S. Public Land Survey Monument Record is correct and complete to the best of my knowledge and belief.


Signature

10/0/93
Date