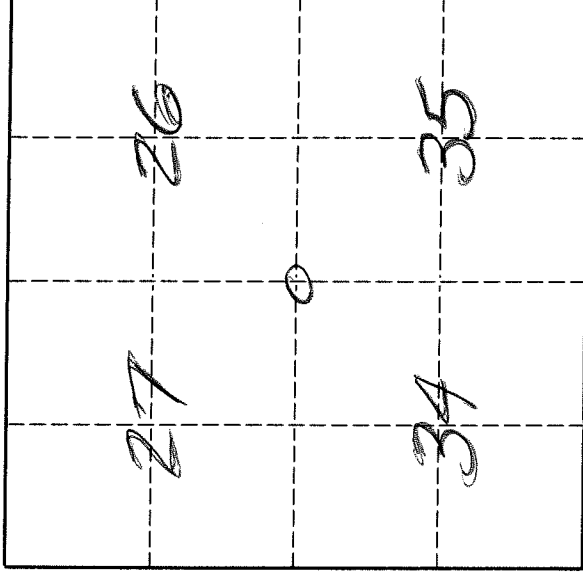


U. S. PUBLIC LAND SURVEY MONUMENT RECORD

I N S T R U C T I O N S:

This record shall show the location of the corner and shall include all of the following nine elements (a through i).

- (a) Identify the corner by reference to the U.S. public land survey system.
 O = Corner monument restored.

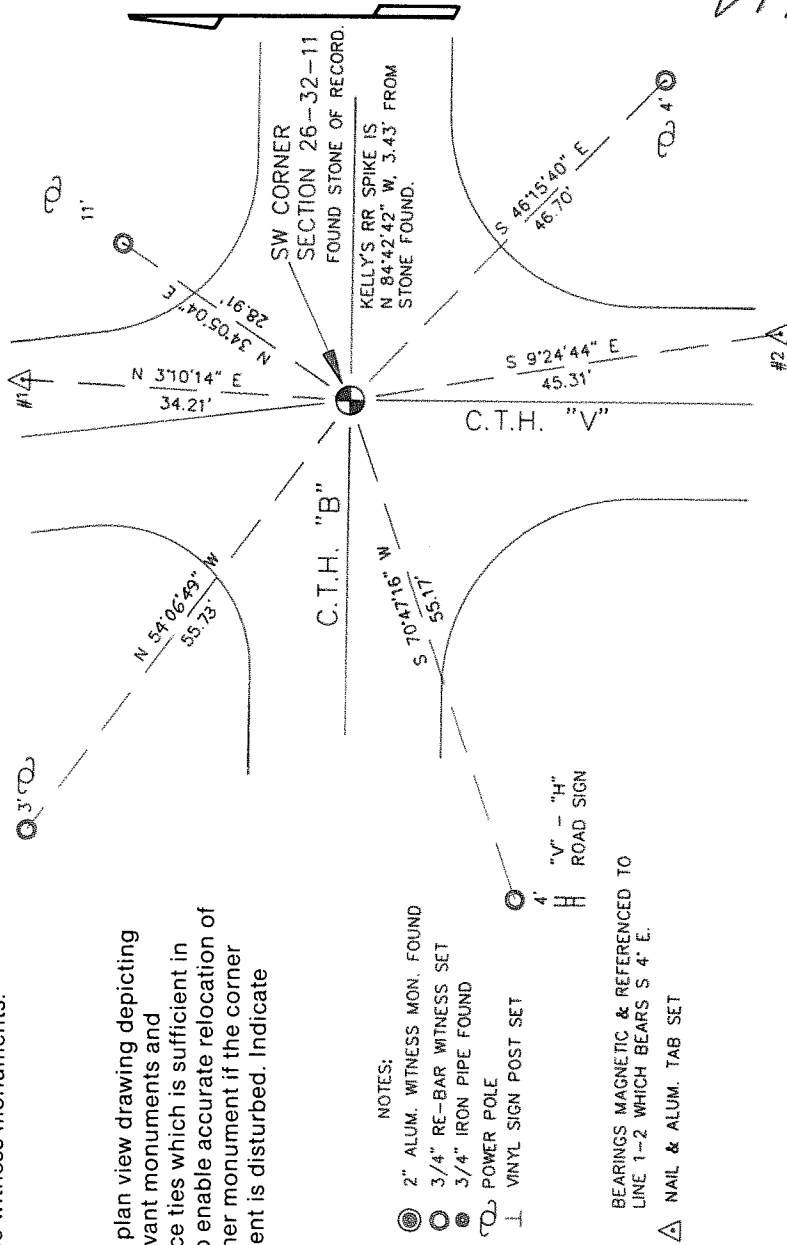


The Southwest corner of Section 26, Township 32 North, Range 11 East, Langlade County, Wisconsin.

T. 32 N., R. 11 E.

- (b) Describe any record evidence, monument evidence, occupational evidence, testimonial evidence or any other material evidence you considered, and whether the monument was found or placed.
 The original corner was established in 1860 by Hiram C. Fellows. Original B.T.'s: lind, 10", S17°W, 7 lks., and an ironwood, 7", N70°E, 12 lks. In 1902 Weibly set a boulder, 10" x 10" x 24" with cross on top, in place of stake.
 In 1986, former surveyor Kelly - "corner reestablished from information received from David Gallenberg, resident witness, in June of 1986. Set new witness monuments". 07/29/96 D. Tlusty, M. Keilcheski dug with backhoe and found stone as described by Weibly, top of stone 2.3' below road surface. Accepted as best evidence of original corner location. Set 3/4" x 30" re-bar on north side of stone and 3/4" x 18" x iron pipe on south side of stone. Stone found is about 3.5' east of Kellys RR spike. Both of Kellys aluminum witness monuments are gone.

- (c) In the plan view drawing below, provide reference ties to at least 4 witness monuments, or, if the location is within a municipality, to at least 2 witness monuments. (Witness monuments shall be made of concrete, natural stone, iron or other equally durable material.)
 Describe witness monuments.
FB 7-36



- (d) Show a plan view drawing depicting the relevant monuments and reference ties which is sufficient in detail to enable accurate relocation of the corner monument if the corner monument is disturbed. Indicate north.

- NOTES:
 ● 2" ALUM. WITNESS MON. FOUND
 ○ 3/4" RE-BAR WITNESS SET
 ⊙ 3/4" IRON PIPE FOUND
 ⊕ POWER POLE
 ⊥ VINYL SIGN POST SET
 4" H "V" - "H" ROAD SIGN
 ⊠ NAIL & ALUM. TAB SET
- BEARINGS MAGNETIC & REFERENCED TO LINE 1-2 WHICH BEARS S 4° E.

V17

Describe any material discrepancy between the location of the corner as restored or reestablished and the location of that corner as previously restored or reestablished by distance and direction. Show the discrepancy on the plan view drawing under (d), above. Show the distances between the corner as previously restored or reestablished and (1) the corner as restored or reestablished, and (2) to at least 2 of the witness monuments shown on the drawing in (d), above.

See tie sketch.

- (f) Was the corner restored through acceptance of (1) an obliterated evidence location, or, (2) a found perpetuated location?
A found perpetuated location.

- (g & h) Was the corner reestablished through lost corner proportionate methods? If so, show the method, including the directions and distances to other public land survey corners used as evidence or used for proportioning in determining the corner location.

No.

- (i) I, David E. Tlusty, Langlade County Surveyor,
(type or print name)

certify that the corner location shown on this record was determined by me or under my direction and control and that this U.S. Public Land Survey Monument Record is correct and complete to the best of my knowledge and belief.

David E. Tlusty 8/6/96
Signature Date

