

4321124 2000

# U.S. PUBLIC LAND SURVEY MONUMENT RECORD

(Prepared and as required by S. A-E 7.08 WI Administrative Code)

The EAST 1/4 corner of Section 24, T. 32 N., R. 11 E., Langlade County, WI  
Corner was (check all that apply)

- Restored through acceptance of an obliterated evidence location.
- Restored through acceptance of a found perpetuated location.
- Determined to be lost and re-established through proportionate methods. (show bearings and distances to PLSS corners used for proportioning.)
- Restored/recovered/re-established in a location that differs from a previously established position. (Show difference in plan view below.)
- Check here if additional information is shown on the reverse side of this form.

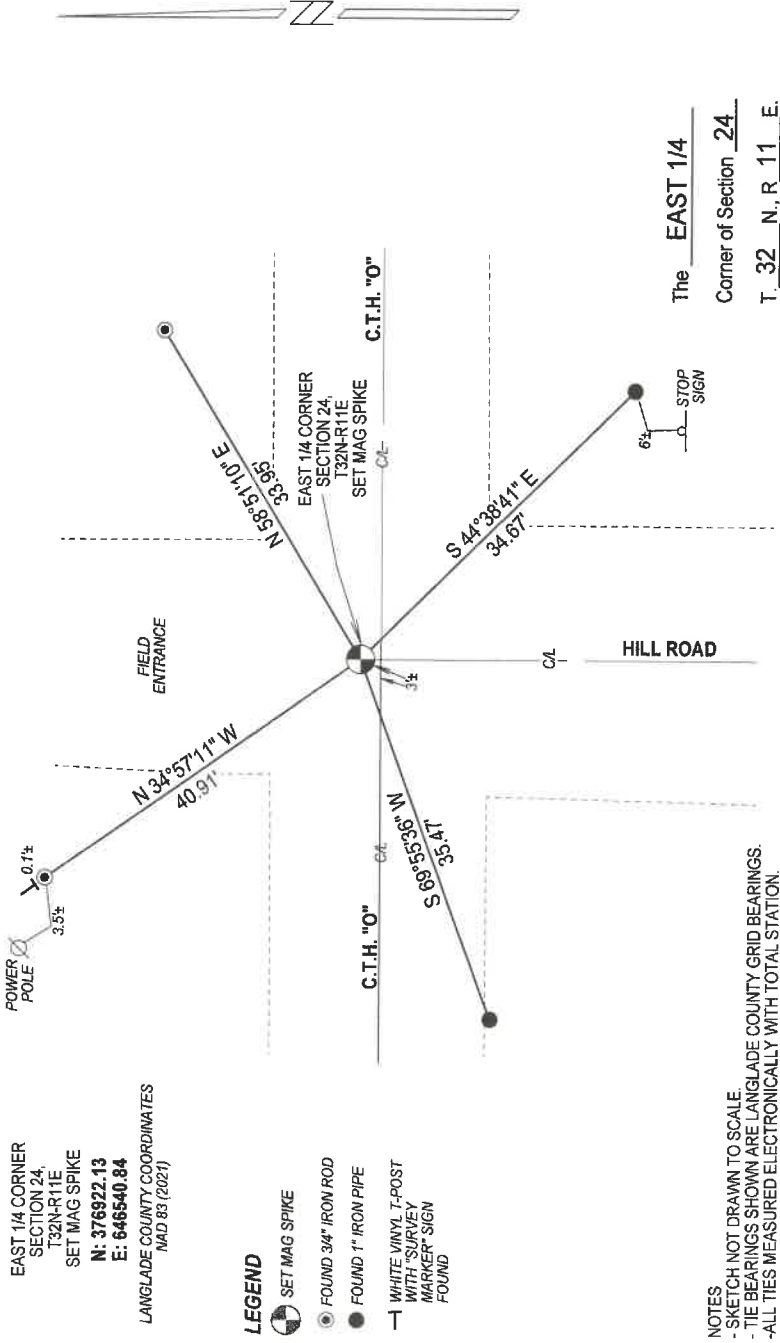
## Describe record evidence, recovered physical evidence, occupational evidence, testimonial evidence, and all other evidence considered in the recovery/restoration of the corner.

1860 - Original corner established by H.C. Fellows - bearing trees: Maple, 12", S46°W, 21 links and a Y. Birch, 10", N68°W, 36 links.  
 1890 - B.F. Dorr surveyed the E-W 1/4 line in adjoining Section 19.  
 Date unknown - M. Hutchinson used this corner for survey work in Section 24.  
 1990 - W. Kelly "found PK nail over iron in road C/L intersection."  
 1997 - D. Tlusty dug for corner with backhoe. Found no iron under Kelly's nail. Found 6"x6" smooth top stone 17" below road surface, "obviously set in upright position. No other stones in area. Accepted stone as best evidence of a perpetuated location of original corner." Tlusty made a chiseled "X" in stone and set a 1" x 30" iron pipe on south side of stone.  
 2022 - Road construction summer of 2022 destroyed corner location. Prior to construction I found a survey nail marker at the corner location. I reset corner after road destruction, verified corner location from existing ties by Tlusty.

## Physical description of the monument set:

Set a mag spike at corner location and tied it out as shown below.

Describe the accessories used to perpetuate the location of the corner. Include a plan view drawing and indicate accessories found/set. Describe measuring point on bearing trees. Show any topographic features that would aid in future recovery of the corner.



NOTES  
 - SKETCH NOT DRAWN TO SCALE.  
 - TIE BEARINGS SHOWN ARE LANGLADE COUNTY GRID BEARINGS.  
 - ALL TIES MEASURED ELECTRONICALLY WITH TOTAL STATION.



INDEX No. P - 25



I, Michael J. Hoffman, certify that the corner location shown on this record was determined by me or under my direction and control and that this U.S. Public Land Survey Monument Record is correct and complete to the best of my knowledge and belief.

Michael Hoffman 12/12/2022  
 Signature Date

○ = Location of corner

# U.S. PUBLIC LAND SURVEY MONUMENT RECORD

(Prepared and as required by S. A-E 7.08 WI Administrative Code)

The EAST 1/4 corner of Section 24, T. 32 N., R. 11 E., Langlade County, WI

Corner was: (check all that apply)

- Restored through acceptance of an obliterated evidence location.
- Restored through acceptance of a found perpetuated location.
- Determined to be lost and re-established through proportionate methods. 3211242000  
(Show bearings and distances to PLSS corners used for proportioning.)
- Restored/recovered/reestablished in a location that differs from a previously established position. (Show difference in plan view below.)

Check here if additional information is shown on the reverse side of this form.

**Describe record evidence, recovered physical evidence, occupational evidence, testimonial evidence and all other evidence considered in the recovery/restoration of the corner.**

The original corner was established in 1860 by Hiram C. Fellows. Original bearing trees: maple, 12", S46°W, 21 lks. and a y. birch, 10", N68°W, 36 lks. B.F. Dorr, 1890, surveyed the E-W quarter line in adjoining Section 19. Deleglise (FB144-9) road survey "on E-W 1/4 line thru Section 24, found E orig. 1/4 post S24". Hutchinson (date unknown, FB 122-2) used this corner for survey work in Section 24, but didn't describe the corner. Former surveyor Kelly, 1990, described this corner as "Found in place: PK nail over iron in road CL intersection". 05/14/97 D. Tlusty, T. Wencil dug for corner with backhoe. Found no iron under Kellys nail. At 17" below road, found approx. 6" x 6" smooth top stone, obviously set in an upright position. No other stones in area. Accepted stone as best evidence of a perpetuated location of original corner. Kellys' nail is 2.54' SE of stone found. Measured witness monuments as shown below.

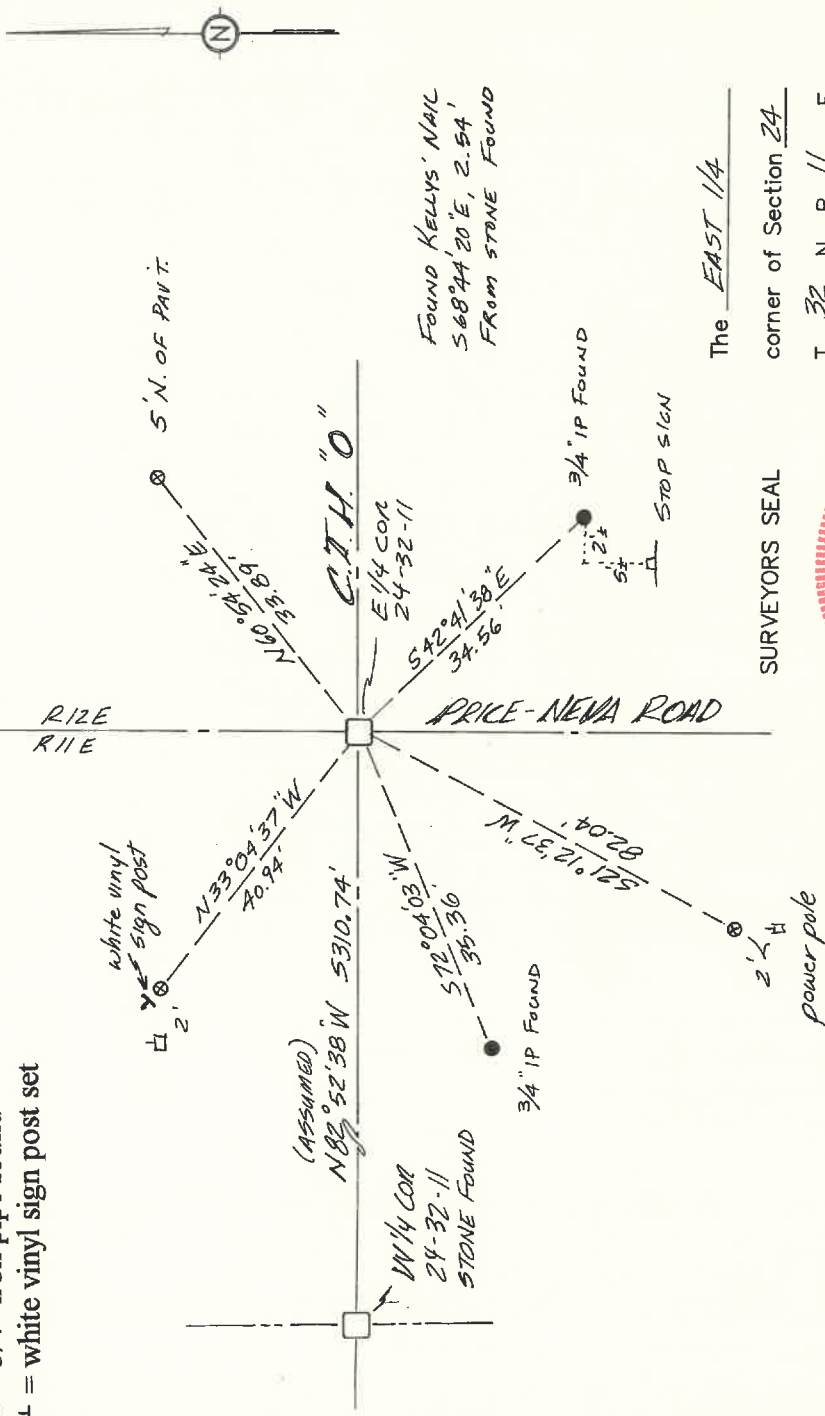
Physical description of the monument set:

For the corner, I left stone in place, made a chiseled "X" on the top of it and set a 1" x 30" iron pipe on south side of it.

Describe the accessories used to perpetuate the location of the corner. Include a plan view drawing and indicate accessories found/set. Describe measuring point on bearing trees. Show any topographic features that would aid in future recovery of the corner.

- ⊙ = 3/4" x 30" rebar with red plastic cap set flush with ground
- = 3/4" iron pipe found
- ⊥ = white vinyl sign post set

Notes FB14-10



SURVEYORS SEAL

The EAST 1/4 corner of Section 24

T. 32 N., R. 11 E.  
Langlade County, WI



I, DAVID E. TLUSTY, LANGLADE COUNTY SURVEYOR, certify that the corner location shown on this record was determined by me or under my direction and control and that this U.S. Public Land Survey Monument Record is correct and complete to the best of my knowledge and belief.

David E. Tlusty 6/5/97  
Signature Date



● = Location of corner

INDEX No. P25

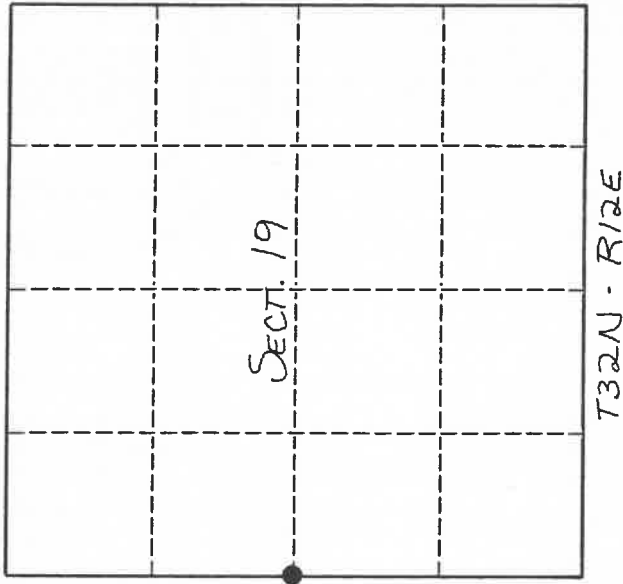
# U. S. PUBLIC LAND SURVEY MONUMENT RECORD

## INSTRUCTIONS:

This record shall show the location of the corner and shall include all of the following nine elements (a through i).

- (a) Identify the corner by reference to the U.S. public land survey system.
- = Corner monument restored.

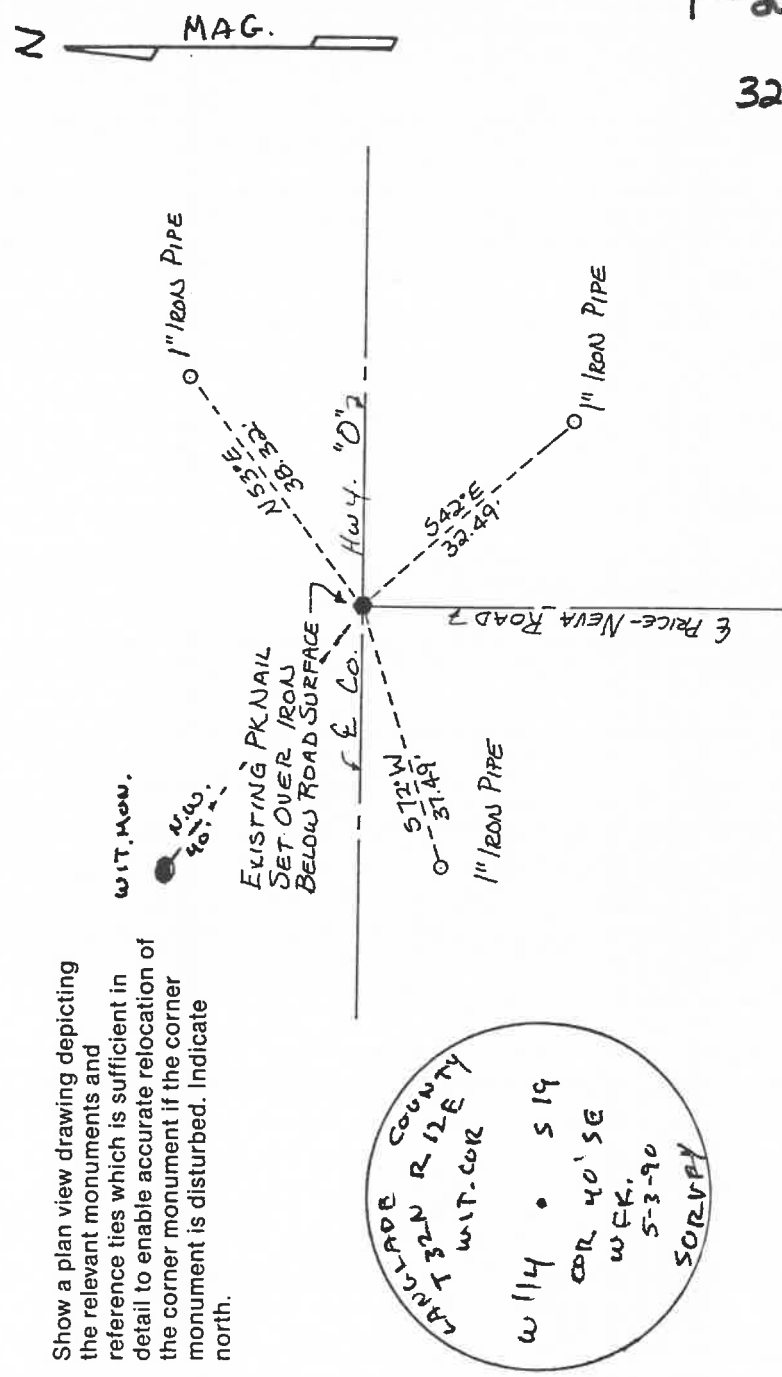
ORIGINAL CORNER ESTABLISHED  
BY JAMES Mc BRIDE IN 1857



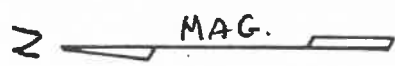
- (b) Describe any record evidence, monument evidence, occupational evidence, testimonial evidence or any other material evidence you considered, and whether the monument was found or placed.

FOUND IN PLACE: PK NAIL OVER IRON IN ROAD & INTERSECTION

- (c) In the plan view drawing below, provide reference ties to at least 4 witness monuments, or, if the location is within a municipality, to at least 2 witness monuments. (Witness monuments shall be made of concrete, natural stone, iron or other equally durable material.) Describe witness monuments.



BRITTADE COUNTY  
T 32N R 12 E  
WIT. COR  
W 114 • S 19  
COR 40' SE  
W.F.K.  
5-3-90  
SORVBY



Describe any material discrepancy between the location of the corner as restored or reestablished and the location of that corner as previously restored or reestablished by distance and direction. Show the discrepancy on the plan view drawing under (d), above. Show the distances between the corner as previously restored or reestablished and (1) the corner as restored or reestablished, and (2) to at least 2 of the witness monuments shown on the drawing in (d), above.

NONE

(f) Was the corner restored through acceptance of (1) an obliterated evidence location, or, (2) a found perpetuated location?  
(2)

(g & h) Was the corner reestablished through lost corner proportionate methods? If so, show the method, including the directions and distances to other public land survey corners used as evidence or used for proportioning in determining the corner location.

No

(i) 1. WILLIAM F. KELLY (type or print name) R.L.S. 1098

certify that the corner location shown on this record was determined by me or under my direction and control and that this U.S. Public Land Survey Monument Record is correct and complete to the best of my knowledge and belief.

William F. Kelly  
Signature

3-30-90  
Date

