

# U.S. PUBLIC LAND SURVEY MONUMENT RECORD

(Prepared and as required by S. A-E 7.08 WI Administrative Code)

The SOUTH QUARTER corner of Section 24, T. 32 N., R. 11 E., Langlade County, WI

Corner was: (check all that apply)

- Restored through acceptance of an obliterated evidence location.
- Restored through acceptance of a found perpetuated location.
- Determined to be lost and re-established through proportionate methods.

(Show bearings and distances to PLSS corners used for proportioning.)

- Restored/recovered/reestablished in a location that differs from a previously established position. (Show difference in plan view below.)

321124 0020

- Check here if additional information is shown on the reverse side of this form.

**Describe record evidence, recovered physical evidence, occupational evidence, testimonial evidence and all other evidence considered in the recovery/restoration of the corner.**

The original corner was established in 1860 by Hiram C. Fellows. Original bearing trees: fir, 10", N32°W, 18 links, and a birch, 8", S17°E, 10 links. 1908, Hutchinson found the 1/4 post and set a stone 12" x 12" x 24". April 13, 1998, Dave Tlusty and Tom Amott Dug with backhoe after prolonging line from W1/16 and section corner to west, found Hutchinson's stone, 12" x 12" x 24" upright, 2' south of old fence post hole (parts of post still there). Removed the stone and replaced it with 2" x 42" aluminum pipe with 3-1/4" aluminum cap in mound of potato rocks. Laid stone alongside new monument set.

Physical description of the monument set:

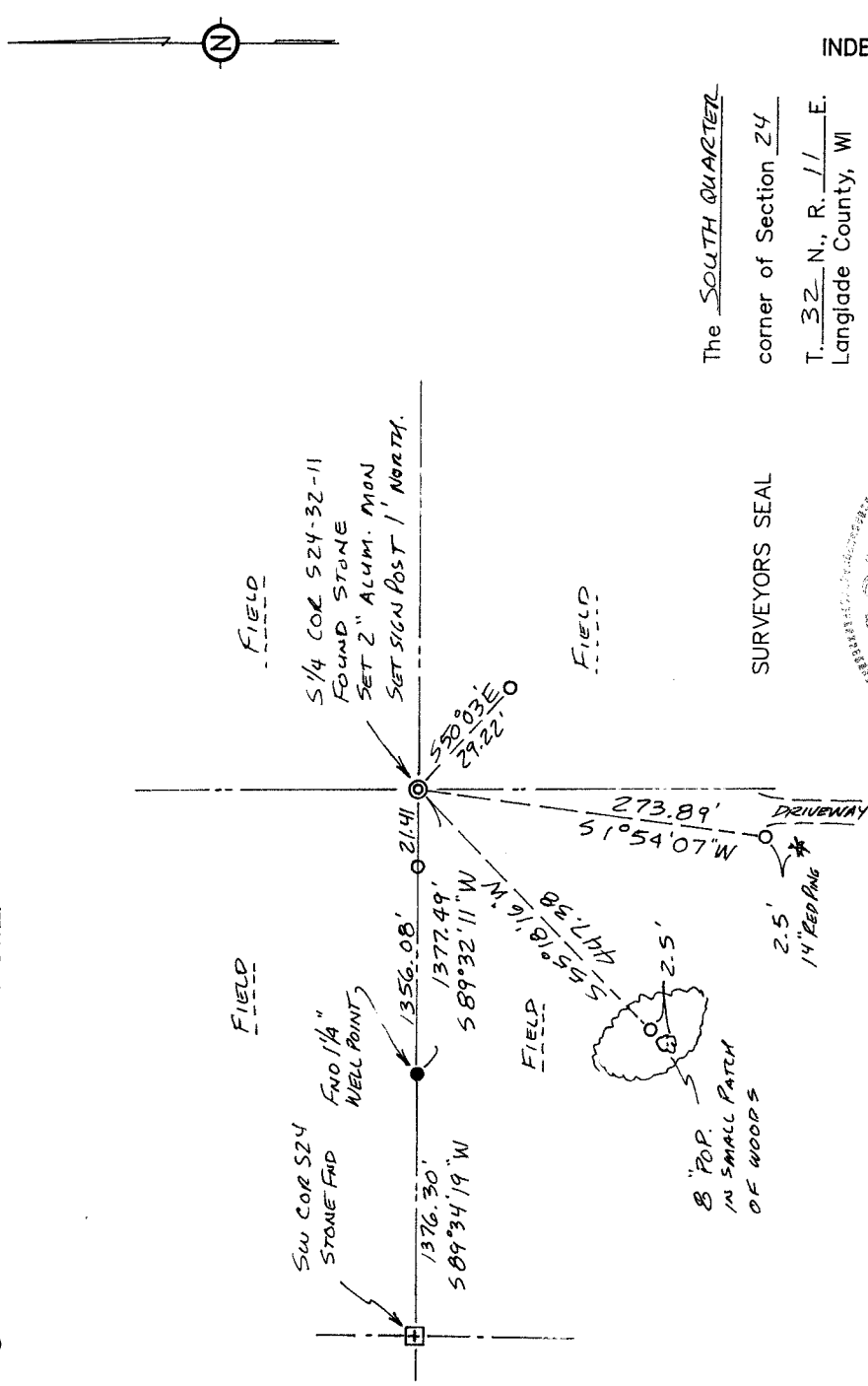
Removed the stone found and replaced it with 2" x 42" aluminum pipe with 3-1/4" aluminum cap in mound of potato rocks.

Describe the accessories used to perpetuate the location of the corner. Include a plan view drawing and indicate accessories found/set. Describe measuring point on bearing trees. Show any topographic features that would aid in future recovery of the corner.

○ = 3/4" x 30" rebar set flush

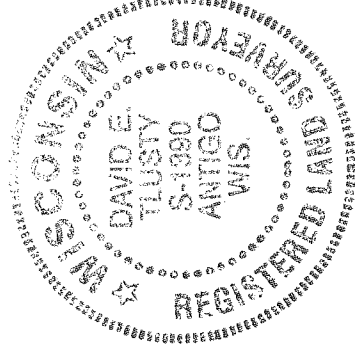
Bearings referenced to section line shown.

FB14-95.5



The SOUTH QUARTER corner of Section 24, T. 32 N., R. 11 E., Langlade County, WI

SURVEYORS SEAL

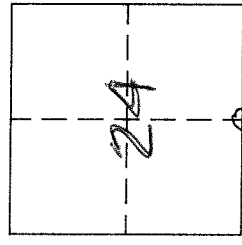


I, DAVID E. TLUSTY, CHANDLER COUNTY SURVEYOR, certify that the corner location shown on this record was determined by me or under my direction and control and that this U.S. Public Land Survey Monument Record is correct and complete to the best of my knowledge and belief.

David E. Tlusty 7/2/99  
Signature

Date

INDEX No. R23



○ = Location of corner