

U.S. PUBLIC LAND SURVEY MONUMENT RECORD

(Prepared and as required by S. A-E 7.08 WI Administrative Code)

The Southeast section corner of Section 24, T. 32 N., R. 12 E., Langlade County, WI

Corner was: (check all that apply)

- Restored through acceptance of an obliterated evidence location.
 - Restored through acceptance of a found perpetuated location.
 - Determined to be lost and re-established through proportionate methods. (Show bearings and distances to PLSS corners used for proportionating.)
 - Restored/recovered/reestablished in a location that differs from a previously established position. (Show difference in plan view below.)
 - Check here if additional information is shown on the reverse side of this form.
- Describe record evidence, recovered physical evidence, occupational evidence, testimonial evidence and all other evidence considered in the recovery/restoration of the corner.**

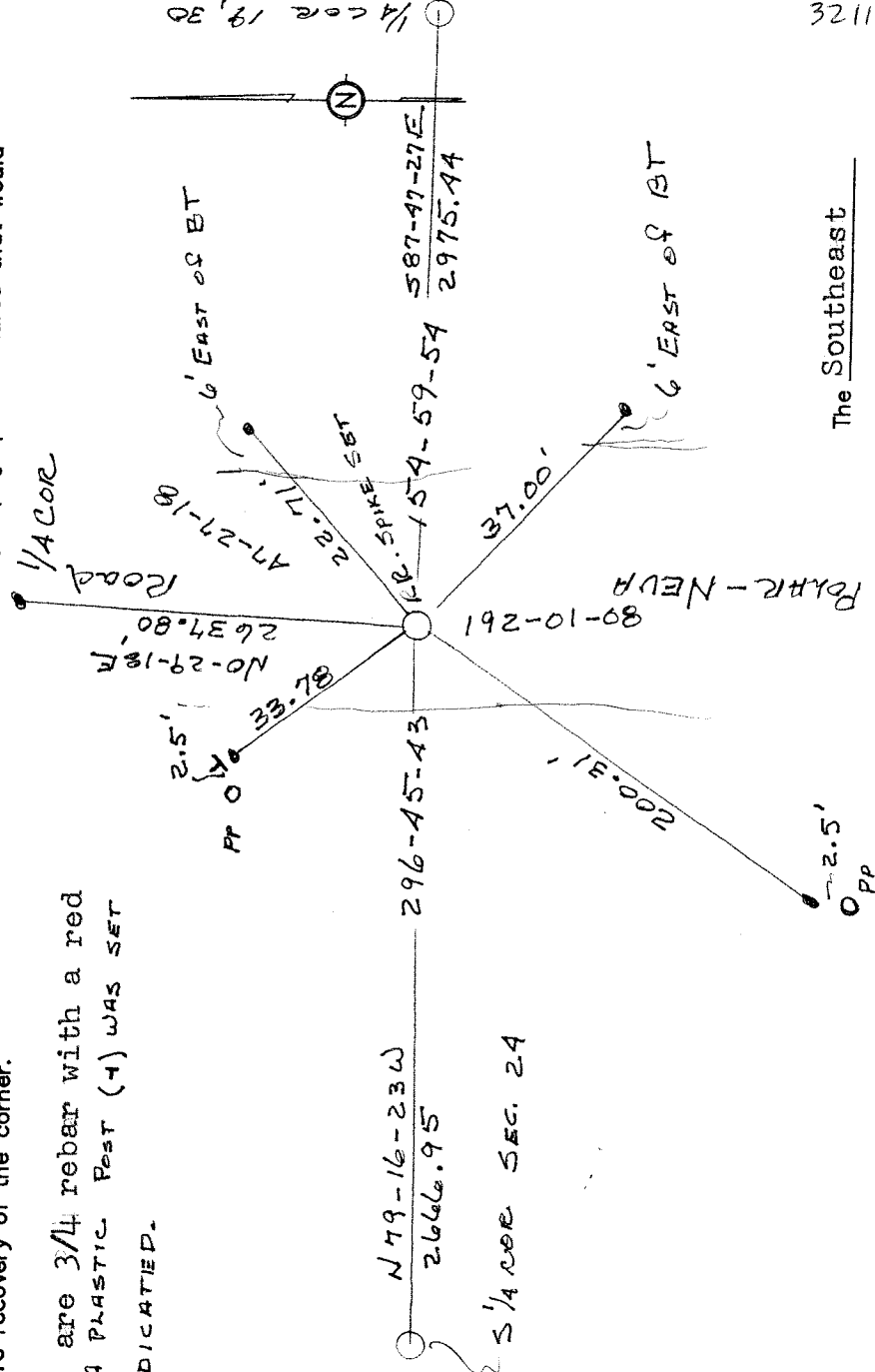
Original survey by Alfred Millard. Ties at that time were Hemlock 20 S64E 52 lks., Hemlock 21 N54E 64 lks., Hemlock 20 S40W 16 lks. and Y. Birch 10 N21W 40 lks. Found Kelly's capped nail. Vol. 3 CSM Page 100. Accepted nail as best possible location for now. Reset nail with a R.R. spike.

Physical description of the monument set:

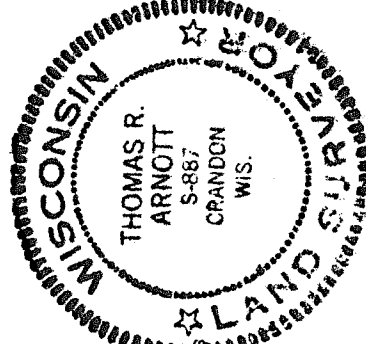
Set R.R. spike in place of Kelly's nail.

Describe the accessories used to perpetuate the location of the corner. Include a plan view drawing and indicate accessories found/set. Describe measuring point on bearing trees. Show any topographic features that would aid in future recovery of the corner.

W.C.'s are 3/4 rebar with a red cap. A PLASTIC PEST (+) WAS SET AS INDICATED.



SURVEYORS SEAL



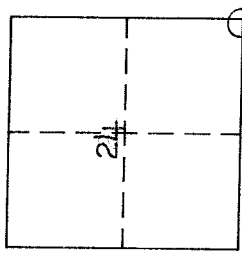
I, Thomas Arnott, certify that the corner location shown on this record was determined by me or under my direction and control and that the U.S. Public Land Survey Monument Record is correct and complete to the best of my knowledge and belief.

Thomas Arnott 6 Nov 1998
Signature Date

The Southeast

corner of Section 24

T. 32 N., R. 12 E.
Langlade County, WI



O = Location of corner

INDEX No.

32-11
R 25

3211240000